



# Hipac

We're here for life

CLINICAL FURNITURE

STAINLESS STEEL SOLUTIONS





We're here for life

**Leaders in:**



Operating tables and accessories



Lights, booms and integration



**Clinical stainless steel furniture**



Clinical consumables



At risk patient protection products

## CLINICAL STAINLESS

Hipac has been manufacturing healthcare products for over 30 years.

Our complete in-house design, manufacture and assembly process means that we have an Australian made product that will perform in the most demanding healthcare environments today.

From custom made, one off items through to our in stock, off the shelf products, Hipac should front of mind when choosing your clinical furniture partner.

If you are looking for quality Australian Made clinical stainless steel furniture that's guaranteed to be here for life, speak to one of our consultants today by phone on +61 2 4823 0000 or 1800 75 93 93 or via email at [info@hipac.com.au](mailto:info@hipac.com.au).





## CONTENTS

- 6** Standard Inclusions on any Hipac Trolley
- 8** Trolley Customisations & Accessories
- 12** Stainless Steel Instrument Trolleys
- 24** Premium Trolley Options
- 27** Table Options
- 28** Linen Skips
- 29** Step Stools
- 30** IV Poles, Bowl Stands and Kick Buckets
- 32** Stools
- 34** Warming Cabinets
- 36** Chrome Wire Shelving







We're here for life

## DELIVERING TAILOR-MADE SOLUTIONS FOR OVER 30 YEARS

**Hipac has been manufacturing high quality healthcare products for more than 30 years. That is 30 years of experience that has brought about an extensive range of products that were specifically developed due to a strong demand from healthcare facilities, seeking high quality, well made, locally manufactured healthcare furniture with a short lead time. Hipac's clients were also looking for cost effective solutions that could withstand years of use in demanding healthcare environments.**

Consequently, Hipac now has an efficient in-house design, manufacturing and assembly process locally, so all our customers are assured of a 100% Australian-made product.

The reason Hipac stands apart from its competitors is the company's vision and ability to produce custom-made healthcare furniture solutions, in addition to a broad range

of off-the-shelf products. Here is a company that prides itself on being able to produce one of a kind, made-to-measure items. This is because they recognise that there is no such thing as a one-size-fits-all solution. No two work environments are the same, and every job therefore presents its own unique opportunities and challenges.

### Consider the advantages of individually handcrafted Australian made furniture

Every customised product that Hipac creates is individually handcrafted from Australian-sourced, medical-grade stainless steel. Importantly, each item is always designed to meet the end user's very specific needs and preferences. Whenever you order a piece of bespoke Hipac stainless steel furniture, you can be sure it will be:


- Designed to perfectly fit the space in which it will be placed, used or stored, taking the size, shape, layout and any other relevant features of that space into account;
- Designed to meet whatever other specifications might be required [e.g. in terms of portability, adaptability, strength, infection control needs and/or suitability for use in sterile environments];

- Designed to help minimise the risk of accidents, injury or damage [i.e. we can devise ways to help address identified potential sources of risk].

Hipac's overall aim when creating a customised piece of stainless steel furniture is to produce something that is perfectly adapted for its environment and intended use. This makes things easier for the people who will be using it and – in turn – helping them best meet the needs of their patients.

This is why Hipac should be your partner of choice when it comes to choosing a provider of stainless steel furniture where you work.





## Hipac stainless steel furniture

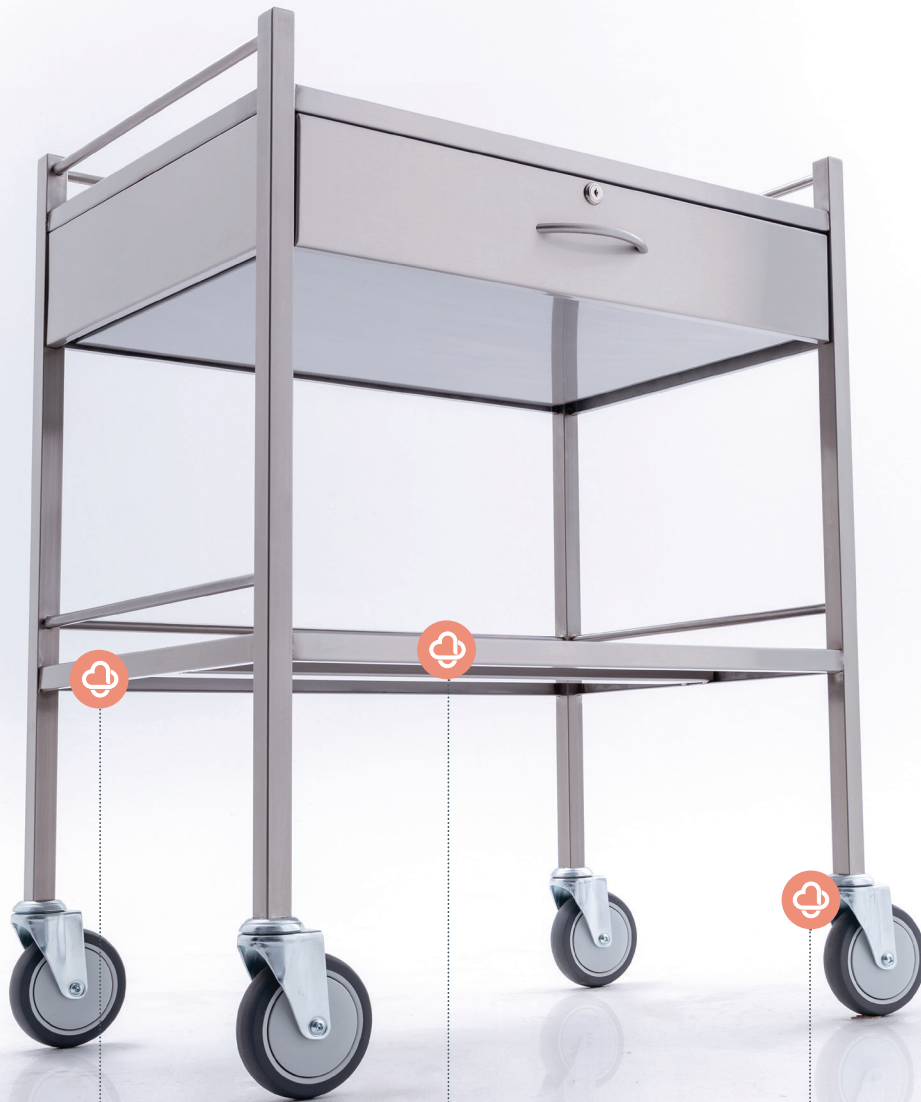
- ✓ Made in Australia, using medical-grade stainless steel
- ✓ Carefully crafted to meet your specific needs & preferences
- ✓ Easy to use
- ✓ Highly durable
- ✓ We guarantee to stand behind all our medical products.

If you're looking for high-quality stainless steel furniture which harnesses the expertise of a company that's been satisfying customers for more than 30 years then speak to one of our consultants today.

P. +61 2 4823 0000 or 1800 75 93 93  
info@hipac.com.au  
hipac.com.au



## Standard inclusions on any Hipac trolley



### **Undershelf Bracing**

Full undershelf bracing support for all shelves providing maximum stability and strength.

### **Double Safety Folds to all Shelf Edges**

We believe that your new trolley should be easy to use without the risk of injury.

### **Precision Ball Bearing Castors**

We design all of our trolleys with WH&S in mind. Precision ball bearing castors allow the weight of the unit to be carried and moved by the bearings rather than by manual exertion. See our castor page for the range of castors available.





**The Hipac Logo** - means we guarantee to stand behind our locally manufactured products



**Full extension drawer runner** - increases the life of the trolley by reducing impact on the drawer and protects its contents







**Undershelf bracing** - full under bracing support for all shelves providing maximum stability and strength

# Trolley Customisations & Accessories

## COLOURED DRAWERS



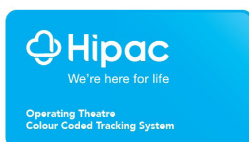
Coloured drawers are both aesthetically and organisationally savvy - you can simply mix and match these coloured drawers to configure a totally unique trolley to suit your objectives.

Colour	Product Code
 Blue	137954
 Green	137955
 Red	137956
 Yellow	137957



## LABELLING

Colour coding your equipment is easy with our durable, self adhesive labels. We use these in theatres to identify which equipment belongs in each theatre. Priced on enquiry.



## EQUIPMENT ETCHING

Etching your equipment allows you to easily identify where it belongs. Priced on enquiry.





## DRAWER DIVIDERS

### Keep your drawers neat and tidy with Hipac drawer dividers

The clear adjustable system lets you customise your drawer as needed without compromising your ability to visualise the items inside the drawer.



Sold in kits per drawer as follows:

#### 50mm divider height

Drawer Size	Code
490 x 490mm	136500
600 x 490mm	136502
750 x 490mm	136504
900 x 490mm	136506

#### 85mm divider height

Drawer Size	Code
490 x 490mm	136501
600 x 490mm	136503
750 x 490mm	136505
900 x 490mm	136507



## DRAWER LINERS

Our foam drawer liners protect your equipment by reducing the possibility of movement inside the drawer. They are reusable and machine washable.



Drawer Size	Code
490 x 490mm	137958
600 x 490mm	137959
750 x 490mm	137960
900 x 490mm	137961



# Trolley Customisations & Accessories (continued)

## 75mm TROLLEY CASTOR UPGRADE

Supplied as standard on small instrument trolleys.  
50kg weight capacity per castor.

**CODE:** 112652



## 125mm TROLLEY CASTOR UPGRADE

Supplied as standard on Large Instrument trolleys.  
110kg weight capacity per castor.

**CODE:** 116783



## 75mm HEAVY DUTY CASTOR WITH BRAKE

This castor offers a total locking solution and a 110kg weight capacity per castor.

**CODE:** 117481



## 125mm HEAVY DUTY CASTOR WITH BRAKE

This castor offers a total locking solution and a 150kg weight capacity per castor.

**CODE:** 142704







### STERILE STOCK COVERS

Turn any trolley into a sterile stock trolley with a sterile stock cover. Codes and pricing on application



See page 36 for chrome wire furniture options.

### LOCKING DRAWERS

Lock with key to suit stainless steel trolley (top drawer only)

**CODE:** 138137

Lock with key to suit stainless steel trolley (all drawers)

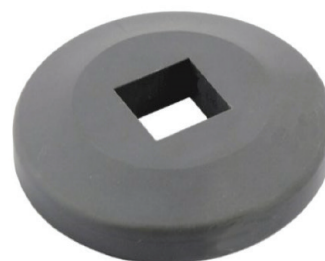
**CODE:** 138138



### SQUARE LEG BUFFER

Made from solid, hard wearing, non marking thermoplastic elastomer. Shock and impact absorbing with square hole.

**CODE:** 136154



### IV POLE AND CLAMP

Clamps onto any Hipac Trolley

**CODE:** 116768



### C SIZE OXYGEN BOTTLE HOLDER

Clamps onto any Hipac Trolley

**CODE:** 116766



# Stainless Steel Instrument Trolleys [With Bottom Shelf, With Rails]

## INSTRUMENT TROLLEY

Australia Made 304 Grade Stainless Steel Instrument Trolley, 2 Shelves with Double Safety Folds to all Shelf Edges, Side and Back Rails, Undershelf Bracing and Four Precision Ball Bearing Castors.

SIZE: 490[L] x 490[W] x 900mm[H]

**CODE:** 116701



## INSTRUMENT TROLLEY

Australia Made 304 Grade Stainless Steel Instrument Trolley, 2 Shelves with Double Safety Folds to all Shelf Edges, Side and Back Rails, Undershelf Bracing and Four Precision Ball Bearing Castors.

SIZE: 600[L] x 490[W] x 900mm[H]

**CODE:** 116703



## INSTRUMENT TROLLEY

Australia Made 304 Grade Stainless Steel Instrument Trolley, 2 Shelves with Double Safety Folds to all Shelf Edges, Side and Back Rails, Undershelf Bracing and Four Precision Ball Bearing Castors.

SIZE: 750[L] x 490[W] x 900mm[H]

**CODE:** 116705



## INSTRUMENT TROLLEY

Australia Made 304 Grade Stainless Steel Instrument Trolley, 2 Shelves with Double Safety Folds to all Shelf Edges, Side and Back Rails, Undershelf Bracing and Four Precision Ball Bearing Castors.

SIZE: 900[L] x 490[W] x 900mm[H]

**CODE:** 116707





### INSTRUMENT TROLLEY

Australia Made 304 Grade Stainless Steel Instrument Trolley, 2 Shelves with Double Safety Folds to all Shelf Edges, Side and Back Rails, Undershelf Bracing and Four Precision Ball Bearing Castors.

SIZE: 1000[L] x 490[W] x 900mm[H]

**CODE:** 116717



### INSTRUMENT TROLLEY

Australia Made 304 Grade Stainless Steel Instrument Trolley, 2 Shelves with Double Safety Folds to all Shelf Edges, Side and Back Rails, Undershelf Bracing and Four Precision Ball Bearing Castors.

SIZE: 1000[L] x 600[W] x 900mm[H]

**CODE:** 116719



### INSTRUMENT TROLLEY

Australia Made 304 Grade Stainless Steel Instrument Trolley, 2 Shelves with Double Safety Folds to all Shelf Edges, Side and Back Rails, Undershelf Bracing and Four Precision Ball Bearing Castors.

SIZE: 1200[L] x 600[W] x 900mm[H]

**CODE:** 116721



Manufactured with side and back rails to protect your vital medical equipment and supplies while you work.

# Stainless Steel Instrument Trolleys [With Bottom Shelf, Without Rails]

## INSTRUMENT TROLLEY

Australia Made 304 Grade Stainless Steel Instrument Trolley, 2 Shelves with Double Safety Folds to all Shelf Edges, Undershelf Bracing and Four Precision Ball Bearing Castors.

SIZE: 490[L] x 490[W] x 900mm[H]

**CODE:** 116902



## INSTRUMENT TROLLEY

Australia Made 304 Grade Stainless Steel Instrument Trolley, 2 Shelves with Double Safety Folds to all Shelf Edges, Undershelf Bracing and Four Precision Ball Bearing Castors.

SIZE: 600[L] x 490[W] x 900mm[H]

**CODE:** 116702



## INSTRUMENT TROLLEY

Australia Made 304 Grade Stainless Steel Instrument Trolley, 2 Shelves with Double Safety Folds to all Shelf Edges, Undershelf Bracing and Four Precision Ball Bearing Castors.

SIZE: 750[L] x 490[W] x 900mm[H]

**CODE:** 116704



## INSTRUMENT TROLLEY

Australia Made 304 Grade Stainless Steel Instrument Trolley, 2 Shelves with Double Safety Folds to all Shelf Edges, Undershelf Bracing and Four Precision Ball Bearing Castors.

SIZE: 900[L] x 490[W] x 900mm[H]

**CODE:** 116706





### INSTRUMENT TROLLEY

Australia Made 304 Grade Stainless Steel Instrument Trolley, 2 Shelves with Double Safety Folds to all Shelf Edges, Undershelf Bracing and Four Precision Ball Bearing Castors.

SIZE: 1000[L] x 490[W] x 900mm[H]

**CODE: 116716**



### INSTRUMENT TROLLEY

Australia Made 304 Grade Stainless Steel Instrument Trolley, 2 Shelves with Double Safety Folds to all Shelf Edges, Undershelf Bracing and Four Precision Ball Bearing Castors.

SIZE: 1000[L] x 600[W] x 900mm[H]

**CODE: 116718**



### INSTRUMENT TROLLEY

Australia Made 304 Grade Stainless Steel Instrument Trolley, 2 Shelves with Double Safety Folds to all Shelf Edges, Undershelf Bracing and Four Precision Ball Bearing Castors.

SIZE: 1200[L] x 600[W] x 900mm[H]

**CODE: 116720**



We also supply chrome wire trolleys and shelving kits. See page 36.



# Stainless Steel Instrument Trolleys (Without Bottom Shelf, With Rails)

## INSTRUMENT TROLLEY

Australia Made 304 Grade Stainless Steel Instrument Trolley, 1 Shelf with Double Safety Folds to all Shelf Edges, Side and Back Rails, Undershelf Bracing and Four Precision Ball Bearing Castors.

SIZE: 490[L] x 490[W] x 900mm[H]

**CODE:** 136930



## INSTRUMENT TROLLEY

Australia Made 304 Grade Stainless Steel Instrument Trolley, 1 Shelf with Double Safety Folds to all Shelf Edges, Side and Back Rails, Undershelf Bracing and Four Precision Ball Bearing Castors.

SIZE: 600[L] x 490[W] x 900mm[H]

**CODE:** 136931



## INSTRUMENT TROLLEY

Australia Made 304 Grade Stainless Steel Instrument Trolley, 1 Shelf with Double Safety Folds to all Shelf Edges, Side and Back Rails, Undershelf Bracing and Four Precision Ball Bearing Castors.

SIZE: 750[L] x 490[W] x 900mm[H]

**CODE:** 136932



## INSTRUMENT TROLLEY

Australia Made 304 Grade Stainless Steel Instrument Trolley, 1 Shelf with Double Safety Folds to all Shelf Edges, Side and Back Rails, Undershelf Bracing and Four Precision Ball Bearing Castors.

SIZE: 900[L] x 490[W] x 900mm[H]

**CODE:** 136933



### INSTRUMENT TROLLEY

Australia Made 304 Grade Stainless Steel Instrument Trolley, 1 Shelf with Double Safety Folds to all Shelf Edges, Side and Back Rails, Undershelf Bracing and Four Precision Ball Bearing Castors.

SIZE: 1000[L] x 490[W] x 900mm[H]

**CODE:** 136934



### INSTRUMENT TROLLEY

Australia Made 304 Grade Stainless Steel Instrument Trolley, 1 Shelf with Double Safety Folds to all Shelf Edges, Side and Back Rails, Undershelf Bracing and Four Precision Ball Bearing Castors.

SIZE: 1000[L] x 600[W] x 900mm[H]

**CODE:** 136935



### INSTRUMENT TROLLEY

Australia Made 304 Grade Stainless Steel Instrument Trolley, 1 Shelf with Double Safety Folds to all Shelf Edges, Side and Back Rails, Undershelf Bracing and Four Precision Ball Bearing Castors.

SIZE: 1200[L] x 600[W] x 900mm[H]

**CODE:** 136936



Made in Australia, using medical-grade stainless steel.

Carefully crafted to meet your specific needs & preferences.

Easy to use.

Highly durable.



# Stainless Steel Instrument Trolleys (Without Bottom Shelf, Without Rails)

## INSTRUMENT TROLLEY

Australia Made 304 Grade Stainless Steel Instrument Trolley, 1 Shelf with Double Safety Folds to all Shelf Edges, Undershelf Bracing and Four Precision Ball Bearing Castors.

SIZE: 490[L] x 490[W] x 900mm[H]

**CODE:** 137602



## INSTRUMENT TROLLEY

Australia Made 304 Grade Stainless Steel Instrument Trolley, 1 Shelf with Double Safety Folds to all Shelf Edges, Undershelf Bracing and Four Precision Ball Bearing Castors.

SIZE: 600[L] x 490[W] x 900mm[H]

**CODE:** 137603



## INSTRUMENT TROLLEY

Australia Made 304 Grade Stainless Steel Instrument Trolley, 1 Shelf with Double Safety Folds to all Shelf Edges, Undershelf Bracing and Four Precision Ball Bearing Castors.

SIZE: 750[L] x 490[W] x 900mm[H]

**CODE:** 137604



## INSTRUMENT TROLLEY

Australia Made 304 Grade Stainless Steel Instrument Trolley, 1 Shelf with Double Safety Folds to all Shelf Edges, Undershelf Bracing and Four Precision Ball Bearing Castors.

SIZE: 900[L] x 490[W] x 900mm[H]

**CODE:** 137605



### INSTRUMENT TROLLEY

Australia Made 304 Grade Stainless Steel Instrument Trolley, 1 Shelf with Double Safety Folds to all Shelf Edges, Undershelf Bracing and Four Precision Ball Bearing Castors.

SIZE: 1000[L] x 490[W] x 900mm[H]

**CODE:** 137606



### INSTRUMENT TROLLEY

Australia Made 304 Grade Stainless Steel Instrument Trolley, 1 Shelf with Double Safety Folds to all Shelf Edges, Undershelf Bracing and Four Precision Ball Bearing Castors.

SIZE: 1000[L] x 600[W] x 900mm[H]

**CODE:** 137607



### INSTRUMENT TROLLEY

Australia Made 304 Grade Stainless Steel Instrument Trolley, 1 Shelf with Double Safety Folds to all Shelf Edges, Undershelf Bracing and Four Precision Ball Bearing Castors.

SIZE: 1200[L] x 600[W] x 900mm[H]

**CODE:** 137608



All Hipac trolleys are designed with work health and safety in mind.

Our precision ball bearing castors allow the weight of the unit to be carried and moved by the bearings rather than by manual exertion.

# One Drawer Instrument Trolleys (With Bottom Shelf, With Rails)

## ONE DRAWER INSTRUMENT TROLLEY

Australia Made 304 Grade Stainless Steel Instrument Trolley, 1 Shelf with Double Safety Folds to all Shelf Edges, 1 Soft Closing Drawer, Side and Back Rails, Undershelf Bracing and Four Precision Ball Bearing Castors.

SIZE: 490[L] x 490[W] x 900mm[H]

**CODE:** 116708



## ONE DRAWER INSTRUMENT TROLLEY

Australia Made 304 Grade Stainless Steel Instrument Trolley, 1 Shelf with Double Safety Folds to all Shelf Edges, 1 Soft Closing Drawer, Side and Back Rails, Undershelf Bracing and Four Precision Ball Bearing Castors.

SIZE: 600[L] x 490[W] x 900mm[H]

**CODE:** 116712



## ONE DRAWER INSTRUMENT TROLLEY

Australia Made 304 Grade Stainless Steel Instrument Trolley, 1 Shelf with Double Safety Folds to all Shelf Edges, 1 Soft Closing Drawer, Side and Back Rails, Undershelf Bracing and Four Precision Ball Bearing Castors.

SIZE: 750[L] x 490[W] x 900mm[H]

**CODE:** 116722



## ONE DRAWER INSTRUMENT TROLLEY

Australia Made 304 Grade Stainless Steel Instrument Trolley, 1 Shelf with Double Safety Folds to all Shelf Edges, 1 Soft Closing Drawer, Side and Back Rails, Undershelf Bracing and Four Precision Ball Bearing Castors.

SIZE: 900[L] x 490[W] x 900mm[H]

**CODE:** 116726





# Two Drawer Instrument Trolleys (With Bottom Shelf, With Rails)

## TWO DRAWER INSTRUMENT TROLLEY

Australia Made 304 Grade Stainless Steel Instrument Trolley, 1 Shelf with Double Safety Folds to all Shelf Edges, 2 Soft Closing Drawers, Side and Back Rails, Undershelf Bracing and Four Precision Ball Bearing Castors.

SIZE: 490(L) x 490(W) x 900mm(H)

**CODE: 116709**



## TWO DRAWER INSTRUMENT TROLLEY

Australia Made 304 Grade Stainless Steel Instrument Trolley, 1 Shelf with Double Safety Folds to all Shelf Edges, 2 Soft Closing Drawers, Side and Back Rails, Undershelf Bracing and Four Precision Ball Bearing Castors.

SIZE: 600(L) x 490(W) x 900mm(H)

**CODE: 116713**



## TWO DRAWER INSTRUMENT TROLLEY

Australia Made 304 Grade Stainless Steel Instrument Trolley, 1 Shelf with Double Safety Folds to all Shelf Edges, 2 Soft Closing Drawers, Side and Back Rails, Undershelf Bracing and Four Precision Ball Bearing Castors.

SIZE: 750(L) x 490(W) x 900mm(H)

**CODE: 116723**



## TWO DRAWER INSTRUMENT TROLLEY

Australia Made 304 Grade Stainless Steel Instrument Trolley, 1 Shelf with Double Safety Folds to all Shelf Edges, 2 Soft Closing Drawers, Side and Back Rails, Undershelf Bracing and Four Precision Ball Bearing Castors.

SIZE: 900(L) x 490(W) x 900mm(H)

**CODE: 116727**



# Three Drawer Instrument Trolleys [With Bottom Shelf, With Rails]

## THREE DRAWER INSTRUMENT TROLLEY

Australia Made 304 Grade Stainless Steel Instrument Trolley, 1 Shelf with Double Safety Folds to all Shelf Edges, 3 Soft Closing Drawers, Side and Back Rails, Undershelf Bracing and Four Precision Ball Bearing Castors.

SIZE: 490[L] x 490[W] x 900mm[H]

CODE: 116710



## THREE DRAWER INSTRUMENT TROLLEY

Australia Made 304 Grade Stainless Steel Instrument Trolley, 1 Shelf with Double Safety Folds to all Shelf Edges, 3 Soft Closing Drawers, Side and Back Rails, Undershelf Bracing and Four Precision Ball Bearing Castors.

SIZE: 600[L] x 490[W] x 900mm[H]

CODE: 116714



## THREE DRAWER INSTRUMENT TROLLEY

Australia Made 304 Grade Stainless Steel Instrument Trolley, 1 Shelf with Double Safety Folds to all Shelf Edges, 3 Soft Closing Drawers, Side and Back Rails, Undershelf Bracing and Four Precision Ball Bearing Castors.

SIZE: 750[L] x 490[W] x 900mm[H]

CODE: 116724



## THREE DRAWER INSTRUMENT TROLLEY

Australia Made 304 Grade Stainless Steel Instrument Trolley, 1 Shelf with Double Safety Folds to all Shelf Edges, 3 Soft Closing Drawers, Side and Back Rails, Undershelf Bracing and Four Precision Ball Bearing Castors.

SIZE: 900[L] x 490[W] x 900mm[H]

CODE: 116728





# Four Drawer Instrument Trolleys (With Bottom Shelf, With Rails)

## FOUR DRAWER INSTRUMENT TROLLEY

Australia Made 304 Grade Stainless Steel Instrument Trolley, 1 Shelf with Double Safety Folds to all Shelf Edges, 4 Soft Closing Drawers, Side and Back Rails, Undershelf Bracing and Four Precision Ball Bearing Castors.

SIZE: 490[L] x 490[W] x 900mm[H]

**CODE: 116711**



## FOUR DRAWER INSTRUMENT TROLLEY

Australia Made 304 Grade Stainless Steel Instrument Trolley, 1 Shelf with Double Safety Folds to all Shelf Edges, 4 Soft Closing Drawers, Side and Back Rails, Undershelf Bracing and Four Precision Ball Bearing Castors.

SIZE: 600[L] x 490[W] x 900mm[H]

**CODE: 116715**



## FOUR DRAWER INSTRUMENT TROLLEY

Australia Made 304 Grade Stainless Steel Instrument Trolley, 1 Shelf with Double Safety Folds to all Shelf Edges, 4 Soft Closing Drawers, Side and Back Rails, Undershelf Bracing and Four Precision Ball Bearing Castors.

SIZE: 750[L] x 490[W] x 900mm[H]

**CODE: 116725**



## FOUR DRAWER INSTRUMENT TROLLEY

Australia Made 304 Grade Stainless Steel Instrument Trolley, 1 Shelf with Double Safety Folds to all Shelf Edges, 4 Soft Closing Drawers, Side and Back Rails, Undershelf Bracing and Four Precision Ball Bearing Castors.

SIZE: 900[L] x 490[W] x 900mm[H]

**CODE: 116729**



# Premium Trolley Options

## RESUSCITATION TROLLEY - BASIC

Australia Made 304 Grade Stainless Steel Trolley, 1 Shelf with Double Safety Folds to all Shelf Edges, 2 Soft Closing Drawers, Side and Back Rails, Undershelf Bracing and Four Precision Ball Bearing Castors.

SIZE: 750[L] x 490[W] x 900mm[H]

CODE: 137609



## RESUSCITATION TROLLEY - CLASSIC

Australia Made 304 Grade Stainless Steel Trolley, 1 Shelf with Double Safety Folds to all Shelf Edges, 4 Soft Closing Drawers, Side and Back Rails, Undershelf Bracing and Four Precision Ball Bearing Castors.

SIZE: 750[L] x 490[W] x 900mm[H]

CODE: 116755



## RESUSCITATION TROLLEY - COMBO

Australia Made 304 Grade Stainless Steel Trolley, 1 Shelf with Double Safety Folds to all Shelf Edges, 5 Soft Closing Drawers, Side and Back Rails, Undershelf Bracing and Four Precision Ball Bearing Castors.

SIZE: 750[L] x 490[W] x 900mm [H]

CODE: 116756



## RESUSCITATION TROLLEY - DELUXE

Australia Made 304 Grade Stainless Steel Trolley, 7 Soft Closing Drawers, Side and Back Rails and Four Precision Ball Bearing Castors.

SIZE: 750[L] x 490[W] x 900mm[H]

CODE: 116757





### MULTI DRAWER TROLLEY

Australia Made 304 Grade Stainless Steel Trolley, 6 Soft Closing Drawers, Side and Back Rails and Four Precision Ball Bearing Castors.

SIZE: 900[L] x 490[W] x 900mm[H]

DRAWERS: 4x 100mm[H], 2x 150mm[H]

**CODE:** 116749



### ANAESTHETIC TROLLEY - CLASSIC

Australia Made 304 Grade Stainless Steel Trolley, 4 Soft Closing Drawers, Side and Back Rails and Four Precision Ball Bearing Castors.

SIZE: 600[L] x 490[W] x 900mm[H]

**CODE:** 116750



### LIST CART

Australia Made 304 Grade Stainless Steel Trolley, 2 Hinged Doors, Adjustable Shelves and Four Precision Ball Bearing Castors.

SIZE: 1200[L] x 600[W] x 1430mm[H]

**CODE:** 116866



Custom designs available upon request. Contact us on 1800 75 93 93 or [info@hipac.com.au](mailto:info@hipac.com.au).

### ANAESTHETIC TROLLEY - DELUXE

Australia Made 304 Grade Stainless Steel Trolley, 3 Shelves with Double Safety Folds to all Shelf Edges, 6 Soft Closing Drawers, Side and Back Rails, Undershelf Bracing and Four Precision Ball Bearing Castors.

SIZE: 900[L] x 490[W] x 900mm[H]

DRAWERS: 2x 75mm[H], 2x 100mm[H], 2x 150mm[H]

**CODE:** 120733



# Premium Trolley Options (continued)

## 2 SHELF CLEARING TROLLEY

Australia Made 304 Grade Stainless Steel Trolley, 2 Shelves with Double Safety Folds to all Shelf Edges, Undershelf Bracing and Four Precision Ball Bearing Castors.

SIZE: 900[L] x 490[W] x 900mm[H]

**CODE: 116849**



## 3 SHELF CLEARING TROLLEY

Australia Made 304 Grade Stainless Steel Trolley, 3 Shelves with Double Safety Folds to all Shelf Edges, Undershelf Bracing and Four Precision Ball Bearing Castors.

SIZE: 900[L] x 490[W] x 900mm[H]

**CODE: 116850**



## UTILITY TROLLEY

Australia Made 304 Grade Stainless Steel Trolley with Four Precision Ball Bearing Castors. Supplied with Polyethylene Bins.

SIZE: 820[L] x 490[W] x 910mm[H]

BINS:

Top - 640[L] x 410[W] x 270mm[H],

Bottom - 640[L] x 410[W] x 210mm[H]

**CODE: 120312**



## BULK COLLECTION TROLLEY

Australia Made 304 Grade Stainless Steel Trolley, 1 Shelf with Double Safety Folds to all Shelf Edges, Undershelf Bracing and Four Precision Ball Bearing Castors.

SIZE: 900[L] x 600[W] x 950mm[H]

**CODE: 137230**



## LINEN TROLLEY

Australia Made 304 Grade Stainless Steel Trolley, 1 Shelf with Double Safety Folds to all Shelf Edges, Undershelf Bracing and Four Precision Ball Bearing Castors.

SIZE: 950[L] x 800[W] x 1200mm[H]

**CODE: 137229**



## NESTABLE TABLE SET

Australia Made 304 Grade Stainless Steel Trolley, 1 Shelf with Double Safety Folds to all Shelf Edges, Undershelf Bracing and Four Precision Ball Bearing Castors (per trolley).

SIZE:

1x 1000[L] x 600[W] x 900mm[H]

1x 880[L] x 550[W] x 865mm[H]

1x 760[L] x 500[W] x 830mm[H]

**CODE: 116730**



# Table Options

## ARM TABLE

Australia Made 304 Grade Stainless Steel Table with X-Ray Translucent Top and Four Precision Ball Bearing Locking Castors.

SIZE: 750(L) x 490(W) x 470-1140mm(H)

**CODE: 120434**



## MAYO - 2 LEG FLAT BASE

Australia Made 304 Grade Stainless Steel Trolley, One Tray and Two Precision Ball Bearing Castors.

SIZE: 560(W) x 410(L) x 820-1120mm(H)

**CODE: 116813**

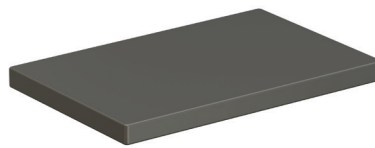


## PAD

Pad to suit Arm Table.

SIZE: 750(L) x 490(W) x 50mm(H)

**CODE: 116627**



## MAYO - 3 LEG BASE

Australia Made 304 Grade Stainless Steel Trolley, One Tray and Three Precision Ball Bearing Castors.

SIZE: 560(W) x 410(L) x 820-1120mm(H)

**CODE: 116815**



## LITHOTOMY TABLE

Australia Made 304 Grade Stainless Steel Table with Four Precision Ball Bearing Locking Castors.

SIZE: 750(L) x 490(W) x 740-1140mm(H)

**CODE: 116818**



## MAYO - 4 LEG BASE

Australia Made 304 Grade Stainless Steel Trolley, One Tray and Four Precision Ball Bearing Castors.

SIZE: 560(W) x 410(L) x 820-1120mm(H)

**CODE: 116816**





# Linen Skips

## SINGLE LINEN SKIP NO LID

Robust, Light-Weight Construction, to suit a Standard Dry Used Linen Bag with Four 75mm Castors.

SIZE: 380(L) x 540(W) x 850mm(H)

**CODE:** 137828



## DOUBLE LINEN SKIP NO LID

Robust, Light-Weight Construction, to suit a Standard Dry Used Linen Bag with Four 75mm Castors.

SIZE: 780(L) x 540(W) x 850mm(H)

**CODE:** 137829



## TRIPLE LINEN SKIP NO LID

Robust, Light-Weight Construction, to suit a Standard Dry Used Linen Bag with Four 75mm Castors.

SIZE: 1170(L) x 540(W) x 850mm(H)

**CODE:** 137830



## SINGLE LINEN SKIP WITH FOOT OPERATED LID

Robust, Light-Weight Construction, to suit a Standard Dry Used Linen Bag with Four 75mm Castors.

SIZE: 380(L) x 540(W) x 850mm(H)

**CODE:** 137831



## DOUBLE LINEN SKIP WITH FOOT OPERATED LID

Robust, Light-Weight Construction, to suit a Standard Dry Used Linen Bag with Four 75mm Castors.

SIZE: 780(L) x 540(W) x 850mm(H)

**CODE:** 137832



## TRIPLE LINEN SKIP WITH FOOT OPERATED LID

Robust, Light-Weight Construction, to suit a Standard Dry Used Linen Bag with Four 75mm Castors.

SIZE: 1170(L) x 540(W) x 850mm(H)

**CODE:** 137833



# Step Stools

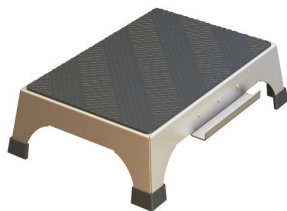
## STEP STOOL

Stainless Steel Construction, with Rubber Feet.  
SIZE: 400[L] x 300[W] x 200mm[H]  
**CODE: 116820**



## STACKING INTERLOCKING STEP STOOL

Stainless Steel Construction, with Rubber Feet and Rubber Top.  
SIZE:  
Top 453[L] x 302[W] x 120mm[H]  
Base 493[L] x 342[W] x 120mm[H]  
**CODE: 114655**



Stacking Interlocking Step Stool, Single, Chequerplate Top  
**CODE: 138156**



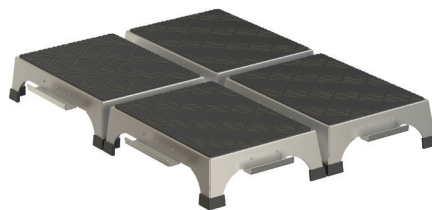
## STEP STOOL

Stainless Steel Construction, with Rubber Feet.  
SIZE: 700[L] x 300[W] x 200mm[H]  
**CODE: 116821**



## STACKING INTERLOCKING STEP STOOL SET

Stainless Steel Construction, with Rubber Feet and Rubber Top.  
Set of Four.  
SIZE:  
Top 453[L] x 302[W] x 120mm[H]  
Base 493[L] x 342[W] x 120mm[H]  
**CODE: 116457**



Stacking Interlocking Step Stool, Set of four, Chequerplate Top  
**CODE: 138157**



## STEP STOOL WITH HAND RAIL

Stainless Steel Construction, with Rubber Feet and Hand Rail.  
SIZE: 700[L] x 300[W] x 200mm[H]  
**CODE: 116822**



## STACKING INTERLOCKING STEP STOOL TROLLEY

Stainless Steel Construction, with Four Castors. Suits Stacking Interlocking Step Stools. Holds Maximum 8 Stools. [Stools Not Included]  
**CODE: 111318**



# IV Poles, Bowl Stands and Kick Buckets

## POLYMER BASE IV POLE

Australian Made 304 Grade Stainless Steel IV Pole with Five Castors.

SIZE: 560(Base Dia.) x 1350 - 2100mm(H)

**CODE:**

116794 - Dual Hook

139241 - Quad Hook



## OXYGEN BOTTLE HOLDER AND CLAMP FOR IV POLE

Clamps onto any Hipac IV Pole. Suits C size oxygen bottle.

**CODE:** 116805



## ALUMINIUM BASE IV POLE

Australian Made 304 Grade Stainless Steel IV Pole with Five Castors.

SIZE: 560(Base Dia.) x 1350 - 2100mm(H)

**CODE:**

116793 - Dual Hook

139242 - Quad Hook



## OFFSET POST IV POLE

Australian Made 304 Grade Stainless Steel IV Pole with Five Castors.

SIZE: 560(Base Dia.) x 1350 - 2050mm

**CODE:**

116908 -Dual Hook

137473 - Quad Hook



## HEAVY DUTY BASE IV POLE

Australian Made 304 Grade Stainless Steel IV Pole with Five Castors.

SIZE: 635(Base Dia.) x 1350 - 2050mm(H)

**CODE:**

113445 - Dual Hook

139239 - Quad Hook



## STACKING BASE IV POLE

Australian Made 304 Grade Stainless Steel IV Pole with Five Castors.

SIZE: 560(Base Dia.) x 1350 - 2050mm

**CODE:**

119218 - Dual Hook

139240 - Quad Hook





### BOWL STAND, SINGLE

Australian Made 304 Grade Stainless Steel Bowl Stand with Five Castors. Suits 300mm diameter bowl (not included)

**CODE:** 116791



### BOWL STAND, DOUBLE

Australian Made 304 Grade Stainless Steel Bowl Stand with Five Castors. Suits 300mm diameter bowl (not included)

**CODE:** 116792



### KICK BUCKET

Stainless Steel Construction with Four Castors.

**CODE:**

116808 - Kick Bucket

116807 - Kick Bucket Stand

116809 - Kick Bucket Lid



### BED PAN & BOTTLE RACK

Australian Made 304 Grade Stainless Steel Ben Pad and Bottle Rack with Drip Tray and Back Plate. Capacity for 6 Pans and 7 Bottles

**CODE:** 116846



# Stools

## COMFORT SERIES MEDICAL STOOL

Hand Activated, Gas Assist.  
Hygiene, seamless anti-slip vinyl seat.  
SIZE: 380(Base Dia.) x 550-740mm(H)  
**CODE: 116911**



## COMFORT SERIES MEDICAL STOOL

Foot Activated, Hydraulic Lift.  
Hygiene, seamless anti-slip vinyl seat.  
SIZE: 380(Base Dia.) x 550-740mm(H)  
**CODE: 120441**



## COMFORT SERIES MEDICAL STOOL

Hand Activated with Backrest, Gas Assist.  
Hygiene, seamless anti-slip vinyl seat.  
SIZE: 380(Base Dia.) x 550-740mm(H)  
**CODE: 116912**



## COMFORT SERIES MEDICAL STOOL

Foot Activated with Backrest, Hydraulic Lift.  
Hygiene, seamless anti-slip vinyl seat.  
SIZE: 380(Base Dia.) x 550-740mm(H)  
**CODE: 120713**



### COMFORT SERIES MEDICAL STOOL

Foot Activated, Gas Assist.  
Hygiene, seamless anti-slip vinyl seat.  
SIZE: 380(Base Dia.) x 550-740mm(H)  
**CODE:** 116909



### COMFORT SERIES SADDLE SEAT

Hand Activated, Gas Assist.  
Saddle Seat, Stetch Black Vinyl.  
SIZE: 380(Base Dia.) x 510-700mm(H)  
**CODE:** 120329



### COMFORT SERIES MEDICAL STOOL

Foot Activated with Backrest, Gas Assist.  
Hygiene, seamless anti-slip vinyl seat.  
SIZE: 380(Base Dia.) x 550-740mm(H)  
**CODE:** 116910



### HYDRAULIC SURGEON STOOL

Foot Controlled, with Front End Locking System. Wedge Style Seat.  
Adjustable Height: 560-760mm(H)  
**CODE:**  
117844 - with Armrests  
139980 - without Armrests



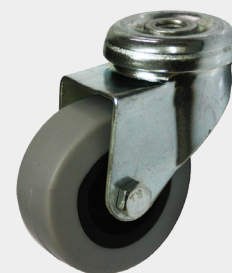
### Replacement Comfort Series Stool Castors



Comfort Series Stool Fixed Glide Option (Set of 5)  
**CODE:** 117517



Comfort Series Stool Twin Wheel 50mm Castor Set (Set of 5)  
**CODE:** 138143



Replacement Castor Set to suit 116909 and 116910 (Set of 5)  
**CODE:** 138144



# Warming Cabinets

## WARMING CABINET

- Digital controls with lockout and USB data retrieval
  - Audible temperature alarm
  - 1 compartment, countertop or under-counter, stainless steel door
- SIZE: 762 [W] x 622 [H] x 673mm [D]  
**CODE: 143590**



## WARMING CABINET

- Digital controls with lockout and USB data retrieval
  - Audible temperature alarm
  - 1 compartment, countertop or under-counter, glass door
- SIZE: 762 [W] x 622 [H] x 673mm [D]  
**CODE: 142738**



**USB data retrieval eliminates the need for temperature books  
Saving time and improving data accuracy around vital temperatures**

## WARMING CABINET

- Digital controls with lockout and USB data retrieval
  - Audible temperature alarm
  - 1 compartment, countertop or under-counter, stainless steel door
- SIZE: 762 [W] x 914 [H] x 673mm [D]  
**CODE: 142741**



## WARMING CABINET

- Digital controls with lockout and USB data retrieval
  - Audible temperature alarm
  - 1 compartment, countertop or under-counter, glass door
- SIZE: 762 [W] x 914 [H] x 673mm [D]  
**CODE: 142740**



### WARMING CABINET

- Digital controls with lockout and USB data retrieval
- Audible temperature alarm
- 1 compartment, 2 adjustable shelves

SIZE: 762 [W] x 1892 [H] x 673mm [D]

**CODE: 143617**



### WARMING CABINET

- Digital controls with lockout and USB data retrieval
- Audible temperature alarm
- 1 compartment, 2 adjustable shelves

SIZE: 762 [W] x 1892 [H] x 673mm [D]

**CODE: 142742**



### WARMING CABINET

- Independent digital controls with lockout and USB data retrieval
- Audible temperature alarm
- 2 compartments, 3 adjustable shelves

SIZE: 762 [W] x 1892 [H] x 673mm [D]

**CODE: 142745**



### WARMING CABINET

- Independent digital controls with lockout and USB data retrieval
- Audible temperature alarm
- 2 compartments, 3 adjustable shelves

SIZE: 762 [W] x 1892 [H] x 673mm [D]

**CODE: 142744**



# Chrome Wire Shelving

## CHROME WIRE BASKET, MEDIUM

SIZE: 235[L] x 205[W] x 160mm[H]

CODE: 137849



## CHROME WIRE BASKET, LARGE

SIZE: 250[L] x 420[W] x 160mm[H]

CODE: 137850



## CHROME WIRE STATIC SHELVING KIT

· 5 shelves

SIZE: 610[L] x 1820[W] x 1880mm[H]

CODE: 137851



## CHROME WIRE STATIC SHELVING KIT

· 4 shelves

SIZE: 460[L] x 1520[W] x 1590mm[H]

CODE: 137852





### CHROME WIRE TROLLEY KIT

- 5 shelves
- SIZE: 530[L] x 1220[W] x 1740mm[H]
- CODE: 137853



### CHROME WIRE TROLLEY KIT

- 5 shelves
- SIZE: 530[L] x 1520[W] x 1740mm[H]
- CODE: 137854



### COMPACTUS (custom per job)

Compactors allow maximum use of the existing area and are custom designed to suit your product and storage parameters. Installing a compactus will increase storage space by up to 40%.

Compactors are custom made for each installation in order to gain maximum space efficiency. They can be manufactured in any of our shelf sizes to suit your product and storage parameters. Even with large or bulky goods, the compactus mobiles have ball bearings mounted at the track guide, to ensure streamlined movement of each mobile bay.

Our compactors are unique in that they have two specially designed overhead rails which allow static shelving units to move along tracking rails to access goods required. This ensures dust won't collect in bottom rails, as some compactors are designed. Hipac can design your top track compactor with multiple bays of various depths and widths.



# Index by Product Name

<b>Product Name</b>	<b>Page</b>	<b>Product Name</b>	<b>Page</b>
2 Shelf Clearing Trolley	26	Lithotomy Table	27
3 Shelf Clearing Trolley	26	Locking Drawers	11
75mm Trolley Castor	10	Mayo Table, 2 Leg Flat Base	27
75mm Heavy Duty Trolley Castor	10	Mayo Table, 3 Leg Base	27
125mm Trolley Castor	10	Mayo Table, 4 Leg Base	27
125mm Heavy Duty Trolley Castor	10	Multi Drawer Trolley	25
Anaesthetic Trolley, Classic	25	Nestable Table Set	26
Anaesthetic Trolley, Deluxe	25	One Drawer Instrument Trolleys	20
Arm Table	27	Oxygen Bottle Holder and Clamp, to suit IV poles	30
Arm Table, Pad	27	Oxygen Bottle Holder, to suit trolley	11
Bed Pan and Bottle Rack	31	Resuscitation Trolley, Basic	24
Bowl Stand, Dual	31	Resuscitation Trolley, Classic	24
Bowl Stand, Single	31	Resuscitation Trolley, Combo	24
Bulk Collection Trolley	26	Resuscitation Trolley, Deluxe	24
Chrome Wire Basket, Medium	36	Square Leg Buffer	11
Chrome Wire Basket, Large	36	Stacking Interlocking Step Stool, Set	29
Chrome Wire Static Shelving Kit	36	Stacking Interlocking Step Stool, Single	29
Chrome Wire Static Shelving Kit	36	Stacking Interlocking Step Stool Trolley	29
Chrome Wire Trolley Kit	37	Step Stool – 400x300x200mm	29
Chrome Wire Trolley Kit	37	Step Stool – 700x300x200mm	29
Coloured Drawers	8	Step Stool with Handrail	29
Comfort Series Medical Stools, Foot Activated	33	Sterile Stock Covers	11
Comfort Series Medical Stools, Hand Activated	32	Three Drawer Instrument Trolleys	22
Comfort Series Medical Stools, Hydraulic Lift	32	Two Drawer Instrument Trolleys	21
Comfort Series Saddle Stool	33	Utility Trolley	26
Comfort Series Stool Castors	33	Warming Cabinets	34
Compactus	37		
Drawer Dividers	9		
Drawer Liners	9		
Equipment Etching	8		
Four Drawer Instrument Trolley	23		
Hydraulic Surgeon Stools	33		
Instrument Trolley, with bottom shelf, with rails	12		
Instrument Trolley, with bottom shelf, without rails	14		
Instrument Trolley, without bottom shelf, with rails	16		
Instrument Trolley, without bottom shelf, without rails	18		
IV Pole and Clamp, to suit Trolleys	11		
IV Pole, Aluminium Base	30		
IV Pole, Heavy Duty Base	30		
IV Pole, Offset Post	30		
IV Pole, Polymer Base	30		
IV Pole, Stacking Base	30		
Kick Bucket	31		
Kick Bucket, Stand	31		
Kick Bucket, Lid	31		
Labelling	8		
Linen Skip, Double, Foot Operated Lid	28		
Linen Skip, Double, No Lid	28		
Linen Skip, Single, Foot Operated Lid	28		
Linen Skip, Single, No Lid	28		
Linen Skip, Triple, Foot Operated Lid	28		
Linen Skip, Triple, No Lid	28		
Linen Trolley	26		
List Cart	25		

# Index by Product Code

Product Code	Page	Product Code	Page	Product Code	Page
111318	29	116815	27	137604	18
112652	10	116816	27	137605	18
113445	30	116818	27	137606	19
114655	29	116820	29	137607	19
116457	29	116821	29	137608	19
116627	27	116822	29	137828	28
116701	12	116846	31	137829	28
116702	14	116849	26	137830	28
116703	12	116850	26	137831	28
116704	14	116866	25	137832	28
116705	12	116902	14	137833	28
116706	14	116908	30	137849	36
116707	12	116909	33	137850	36
116708	20	116910	33	137851	36
116709	21	116911	32	137852	36
116710	22	116912	32	137853	37
116711	23	117481	10	137854	37
116712	20	117844	33	137954	8
116713	21	119218	30	137955	8
116714	22	120312	26	137956	8
116715	23	120329	33	137957	8
116716	15	120441	32	137958	9
116717	13	120713	32	137959	9
116718	15	120733	25	137960	9
116719	13	136154	11	137961	9
116720	15	136500	9	138137	11
116721	13	136501	9	138138	11
116722	20	136502	9	138156	29
116723	21	136503	9	138157	29
116724	22	136504	9	138444	33
116725	23	136505	9	139239	30
116726	20	136506	9	139240	30
116727	21	136507	9	139241	30
116728	22	136763	24	139242	30
116729	23	136930	16	139980	33
116730	26	136931	16	142704	10
116749	25	136932	16		
116750	25	136933	16		
116755	24	136934	17		
116756	24	136935	17		
116757	24	136936	17		
116760	27	137229	26		
116766	11	137230	26		
116768	11	137473	30		
116783	10	137524	34		
116791	31	137525	34		
116792	31	137527	34		
116793	30	137528	34		
116794	30	137529	35		
116805	30	137530	35		
116807	31	137531	35		
116808	31	137532	35		
116809	31	137602	18		
116813	27	137603	18		



## **CLINICAL STAINLESS STEEL FURNITURE**

Hipac has been manufacturing healthcare products for over 30 years.

Our complete in-house design, manufacture and assembly process means that we have an Australian made product that will perform in the most demanding healthcare environments today.

From custom made, one off items through to our in stock, off the shelf products, Hipac should be your front of mind partner of choice when it comes to clinical stainless steel furniture.

So, if you are looking for quality clinical stainless steel furniture that's guaranteed to be here for life, speak to one of our consultants today.

## **ABOUT HIPAC**

We are an Australian healthcare company that guarantees to stand behind all our medical products, both manufactured and imported, because we're here for the life of our products and clients.

PO Box 797, 36 Long St. Goulburn NSW 2580, Australia  
P. +61 2 4823 0000 or 1800 75 93 93  
E. [info@hipac.com.au](mailto:info@hipac.com.au)

SYDNEY | MELBOURNE | BRISBANE | ADELAIDE | PERTH

**[hipac.com.au](http://hipac.com.au)**

ABN 27 600 353 688