



## DDA Contour Grab Rail

### Installation Guide

Hipac Pty Ltd can take no responsibility for incorrect fitting of Grabrails that are not fitted as directed in these instructions.

#### Hipac Product Codes:

**116597, 116598, 116975,  
116976, 116593, 116594,  
116595, 116596**

1. Correctly measure position of rail from floor and walls. If required rail can be installed at small fall to allow for easier cleaning and washing.
2. Position the rails and mark the position of the holes for fixings. [This may require two people]
3. If wall tiles have been installed, drill 8mm holes through tiles to reduce the pressure on the tiles and reduce the chances of cracking tiles. Drill 6.5mm holes into brickwork ensuring it is deep enough to take 25mm green plug and 50mm screw.
4. Install 25mm green plug into hole and push into hole past the depth of the tiles to prevent any pressure on the wall tiles.
5. Hold rail in position and install required number of 12G x 50mm stainless steel security screws. [Refer to list below for number required]
6. The junction between rail and the wall is to be sealed with anti-pick sealant.

#### IMPORTANT

**Position of the Anti-ligature rail is critical to comply with standards Australia AS 1428.1-2009**

#### Fixing Requirements

Stainless Steel Safety Screws.

#### 300mm Grabrail

6nr x 12G x 50mm pin hex countersunk self-tapper screws

#### 700mm Grabrail

8nr x 12G x 50mm pin hex countersunk self-tapper screws

#### 900mm Grabrail

10nr x 12G x 50mm pin hex countersunk self-tapper screws

#### 30 deg Grabrail

18nr x 12G x 50mm pin hex countersunk self-tapper screws

#### 90 deg Grabrail

19nr x 12G x 50mm pin hex countersunk self-tapper screws

#### ABOUT HIPAC

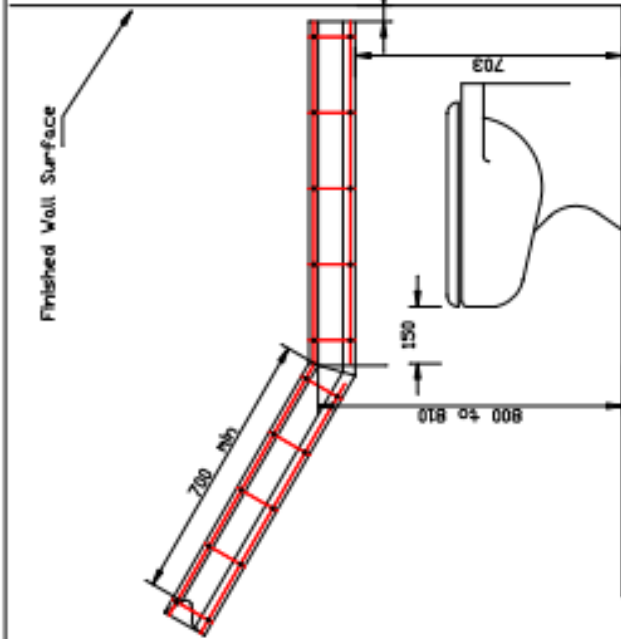
We are an Australian healthcare company that guarantees to stand behind all our medical products, both manufactured and imported, because we're here for the life of our products and clients.

PO Box 797, 36 Long St. Goulburn NSW 2580, Australia  
P. +61 2 4823 0000 E. [info@hipac.com.au](mailto:info@hipac.com.au)

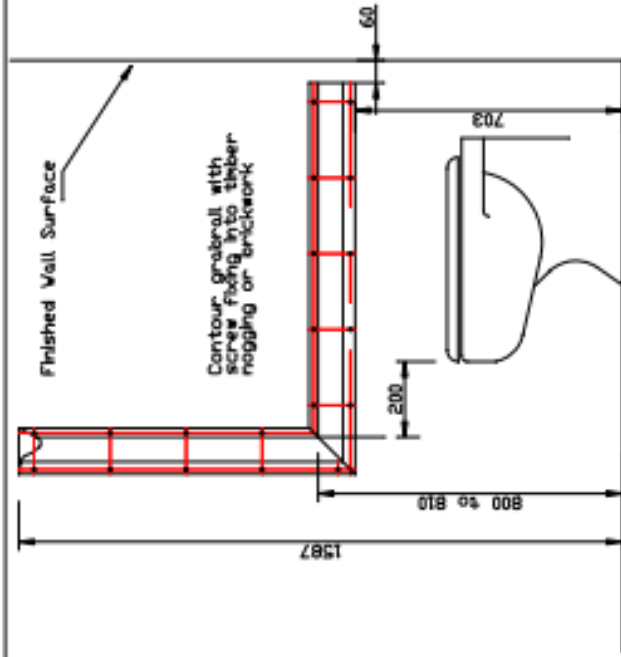
SYDNEY | MELBOURNE | BRISBANE | ADELAIDE | PERTH

[hipac.com.au](http://hipac.com.au)

ABN 27 600 353 688

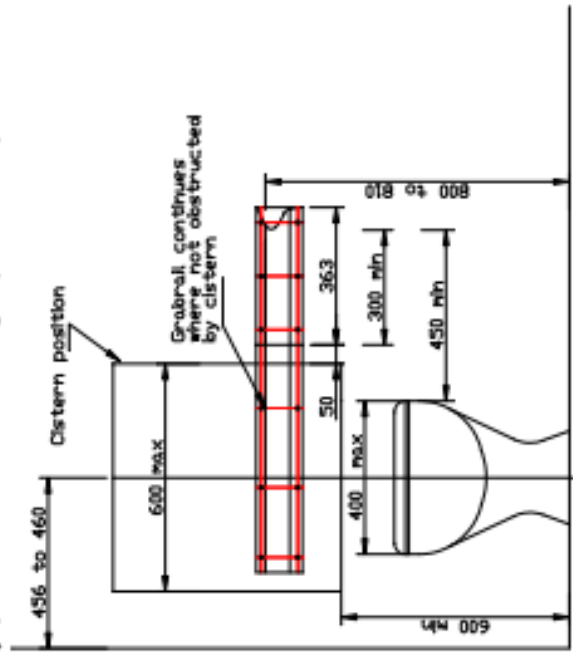


(I) Option A



(II) Option B

(a) Side view showing optional systems for grabrails at side of pan



(b) Grabrail at back of pan

**Fixings List**

- Fixing requirements for fixing into brickwork or timber ply nogging. Allow for depth of tiles and lining.
- 300 Grabrail  
6 x 10g x 50mm pin hex countersunk self tappers
- 700 Grabrail  
6 x 10g x 50mm pin hex countersunk self tapper
- 900 Grabrail  
10 x 10g x 50mm pin hex countersunk self tapper
- 90deg Grabrail  
19 x 10g x 50mm pin hex countersunk self tappers
- 30 deg Grabrail  
18 x 10g x 50mm pin hex countersunk self tappers
- Screws are to be fixed with 25mm green plugs
- Drill hole with 6.5mm or 7mm drill to required depth.

**Install Instructions**

- Measure correct position of rail.
- Mark position of screw holes on wall.
- Drill holes through tiles oversize then drill holes for plugs in brickwork.
- Install green plug well into brickwork
- Install stainless security screws in position.
- Seal top of rail/wall junction with anti-tamper sealant.

Project PPA Grabrail		The Resilience Profile	
Design Prepared By		Checked RB	Approved RB
PO Box 707 Caulfield North 3160 www.ppa.com.au	P. 01 2 4523 0000 F. 01 2 4523 7733 www.ppa.com.au	Revision A	Scale 1:50
© 2013 The PPA Group Pty		Drawn By	Doc No.
			AM
			PPA11 of 11