

Dual Compartment Stainless Steel Warming Cabinet

Datasheet

Introduction

SKYTRON Stainless Blanket and Solution Warming Cabinets are designed to provide evenly heated storage of blankets, sterile water and saline solutions used in the care of patients in surgery, recovery, OB/GYN, ICU, ER, trauma areas, and patient floors. The SKYTRON Model SS2207-M[G] offers a dual compartment full height unit that is able to hold a combination of warm blankets and fluids in individually controlled compartments for today's busy environments.

Technical Data

SKYTRON Warming Cabinets are manufactured from stainless steel with double wall insulation and polished to a #4 satin finish. The door is constructed of double pan stainless steel and insulated and polished to a #4 finish. Optional glass door is an aluminum framework with double pane tempered glass for low heat loss. Warming chamber designed to maintain temperatures +/- 3 degrees of set point through the use of digital controls. Door is manufactured with a full perimeter accordion style magnetic gasket. Cabinet shall be furnished with three adjustable shelves and two fixed shelves



Features

- USB port for data retrieval
- Keyed temperature lockout
- Digital operation
- Continuous readout of chamber temperature and set point temperature
- Temperature accuracy +/- 3 degrees
- Audible and visual over-temp alarms
- Rapid uniform heating in 2-6 hours
- Chamber sizes:
 - Upper: 5.27 cubic ft. [149 liters]
 - Lower: 11.93 cubic ft. [338 liters]
- Temperature range 90°-160° F

Options

Solid Door Configuration	142745
Glass Door Configuration	142744
Mobile Stand	
Caster Kit	
Additional Shelves	
Seismic Braces	
Keyed Door Locks	
Celsius Controls [32-71 °C]	

Note: Fahrenheit is standard unless Celsius control option is selected, not field adjustable.

Dual Compartment Stainless Steel Warming Cabinet

Datasheet

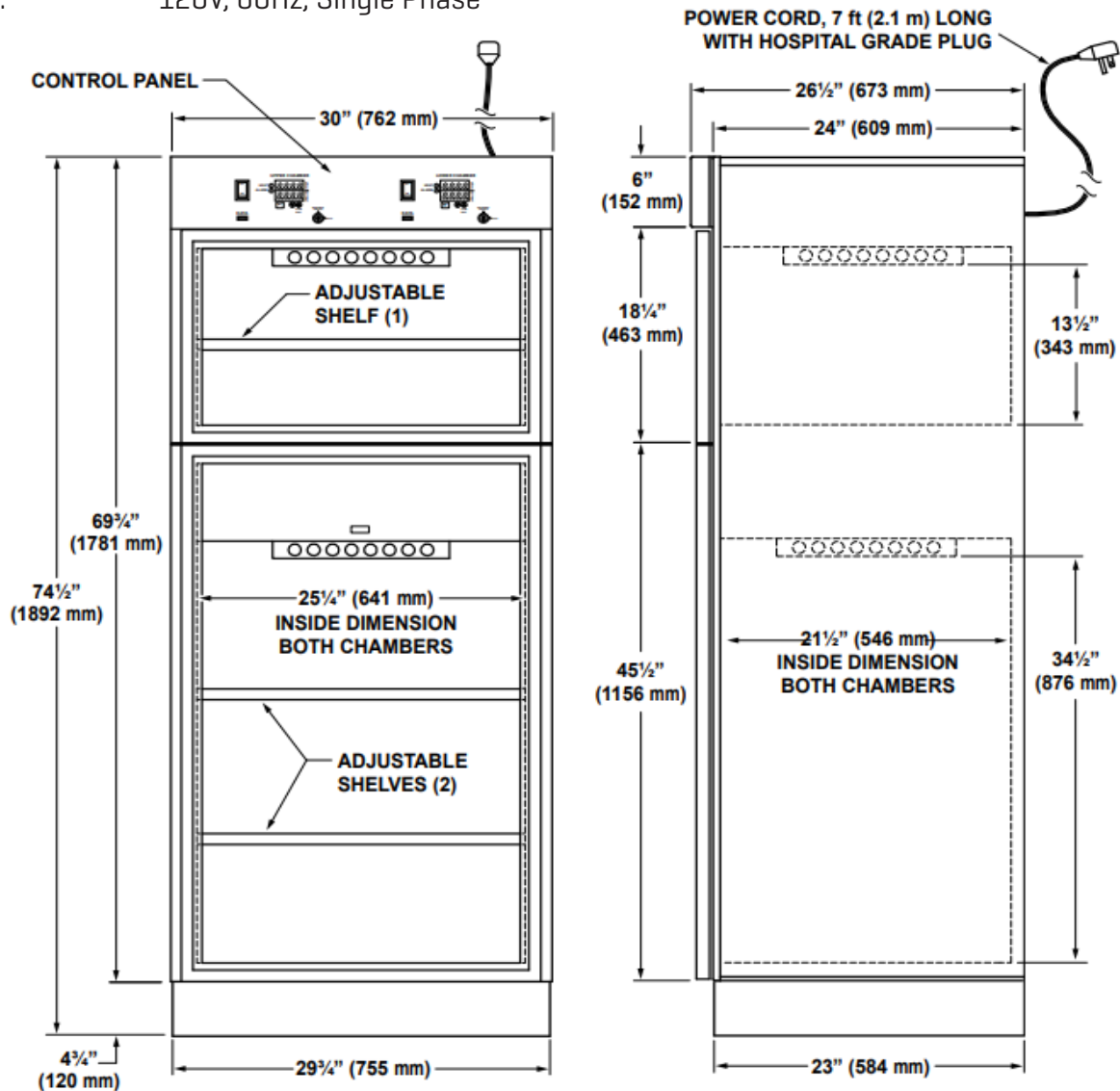
Exterior Dimensions: 30" W x 74½" H x 26½" D
762 mm x 1892 mm x 673mm

Interior Dimensions:
Upper: 25¼" W x 13½" H x 21½" D
641 mm x 343 mm x 546 mm

Lower: 25¼" W x 34½" H x 21½" D
641 mm x 876 mm x 546 mm

Electrical: 120V, 60Hz, Single Phase

Power Consumption: 750 Watts
Amperage: Approx 12 Amps
Weight: 430 lbs [195.5 kg]
BTUs: 2557/hr.



ABOUT HIPAC

We are an Australian healthcare company that guarantees to stand behind all our medical products, both manufactured and imported, because we're here for the life of our products and clients.

PO Box 797, 36 Long St. Goulburn NSW 2580, Australia
P. +61 2 4823 0000 E. info@hipac.com.au

SYDNEY | MELBOURNE | BRISBANE | ADELAIDE | PERTH

hipac.com.au

ABN 27 600 353 688