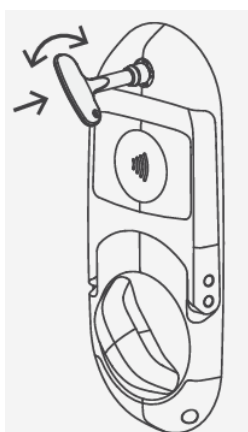
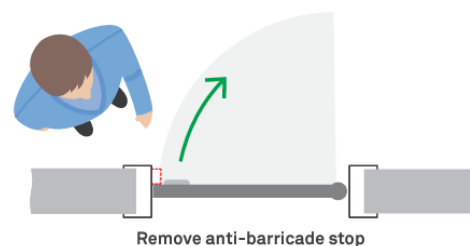




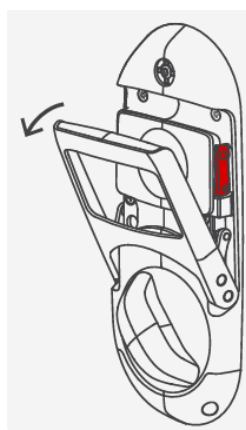
Electronic Access Control for Mental Health

1. Before activating the emergency override, ensure the outward opening swing of the door is clear. If the door has an anti-barricade stop, this must also be removed before activating.



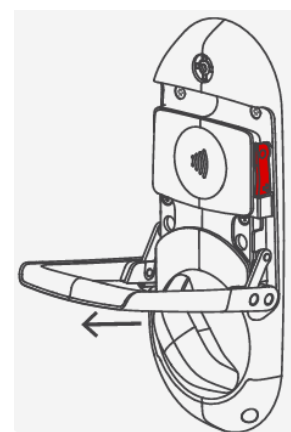
2. **Using your staff-only Lifeline key, activate the emergency lever. The key can be rotated 15 degrees clockwise or anticlockwise.**

If the handle does not automatically deploy check for any obstructions. Manually pull down the handle - but only whilst using the Lifeline key.



3. **Once the handle has been released, push it down to a horizontal position to unlock the door.**

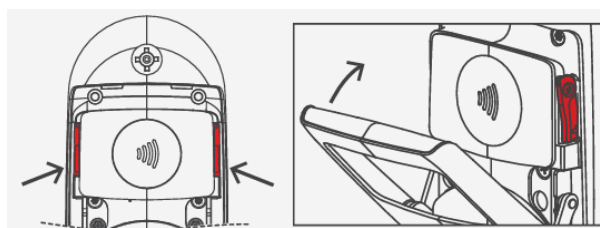
A ratchet mechanism locks the lever in position, deactivating the internal turn pull.



4. **Use the emergency lever to pull the door open.**

5. **To reset the emergency lever, first press down the two red switches. The lever is then free to be pushed back to its stored position.**

Ensure the handle is fully secured in place before vacating the area.



ABOUT HIPAC

We are an Australian healthcare company that guarantees to stand behind all our medical products, both manufactured and imported, because we're here for the life of our products and clients.

PO Box 797, 36 Long St. Goulburn NSW 2580, Australia
P. +61 2 4823 0000 E. info@hipac.com.au

SYDNEY | MELBOURNE | BRISBANE | ADELAIDE | PERTH

hipac.com.au

ABN 27 600 353 688