

## Introduction

The Spectra series LED examination light was developed to bring excellent, color correct light to various departments that require examination lighting. The performance is matched by its low cost of ownership and durability. Applications include emergency departments, labor and delivery, imaging, and general examination.

## Standard Features

- Lightweight, stable, mobile stand with locking castors
- Removable power cord for easy placement
- Sealed lighthead provides smooth surface for clean wipedown between cases
- Lighthead mounted intensity control allows one touch adjustment of light intensity level
- Spring balanced articulating arm offers easy positioning and stability
- 50° upward, 30° downward movement of arm; 355° pitch, 360° roll rotation of lighthead.



## Accessories

- Optional sterilisable handle
- Disposable sterilisable handle covers available

## Architectural Specifications

Lighting system should consist of a 305mm LED exam light. Includes polymer lighthead with 7 high efficiency LEDs (51,200 lux), VSRD optics, and a minimum life of 40,000 hours. Mobile floor stand mounted with total reach of 42" (1067mm) and 13' (4m) removable power cord. 50° upward and 30° downward movement of arm; 355° pitch and 360° roll rotation of lighthead. Light should be Skytron Spectra AUT1S.

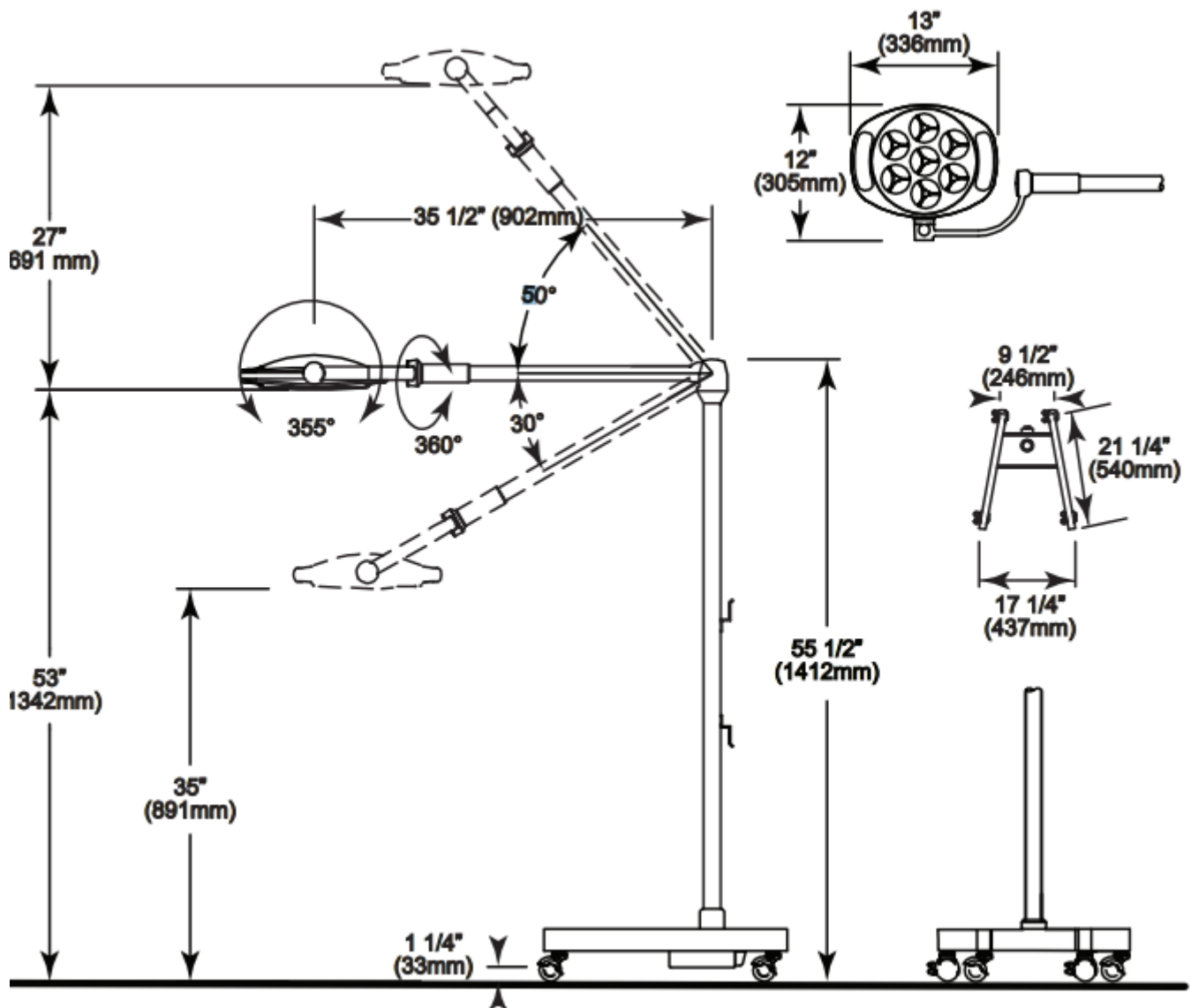
## Technical Data

<b>Electrical:</b>	100-240 VAC, 50/60 Hz, single phase, 0.4 amps, 45 VA
<b>Intensity:</b>	51,200 Lux at 1 metre
<b>Light Field Diameter at 1 meter:</b>	152mm
<b>Color Temperature:</b>	4317K
<b>CRI:</b>	96
<b>LED Life:</b>	40,000 hours
<b>Total Reach:</b>	1067mm

## Spectra Mobile Stand Examination Light

### Datasheet

#### Technical Drawing



#### ABOUT HIPAC

We are an Australian healthcare company that guarantees to stand behind all our medical products, both manufactured and imported, because we're here for the life of our products and clients.

PO Box 797, 36 Long St. Goulburn NSW 2580, Australia  
 P. +61 2 4823 0000 E. info@hipac.com.au

SYDNEY | MELBOURNE | BRISBANE | ADELAIDE | PERTH

[hipac.com.au](http://hipac.com.au)

ABN 27 600 353 688