



Double Swing Hinge

Datasheet

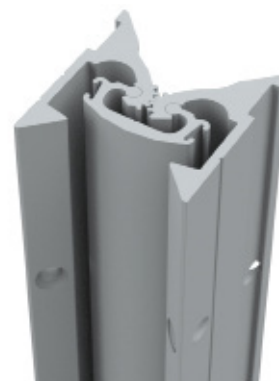
Product Codes

114616 - 2100mm [to suit 44mm door]

119211 - 2400mm [to suit 44mm door]

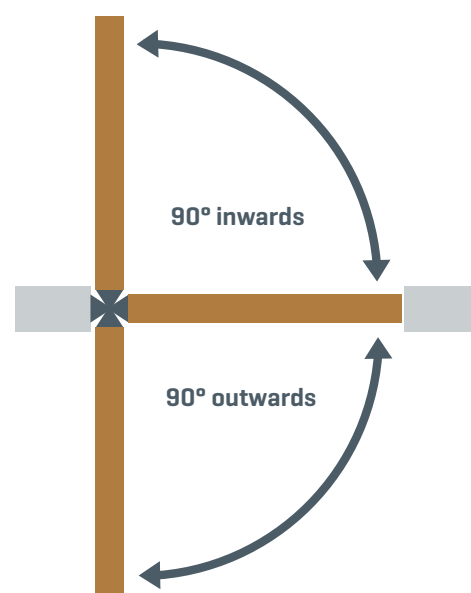
Description

This solution is ideal for doors that need to swing 90° in both directions [180°] and eliminates the possibility of pivot doors splitting on impact. It provides an ideal solution for busy corridor doors which are exposed to impact damage.



Specifications

- Double Acting; Single or Double Door Configuration
- Hinge Length: 2100 or 2400mm.
- Performance Rating: BS EN 1935 equivalent
- Category of use Grade 4 severe duty
- 0.5mm wire test to DHF TS 001:2013 B4
- Door Weight 160kg Grade 6 for severe duty DD171
- Colour: Satin Anodised Aluminium [SAA]
- Fixing: When fitting to a metal frame ensure minimum 2mm material or sufficient reinforcement for screw fixings.
- UK Patent GB 2451 276A



Testing

- Performance Tested to European Standard BS EN:1953
- Tested to DHF TS 001:2013 B4 (0.5mm wire test)

Maintenance and Cleaning

The Double Swing Hinge operates by a number of interlocking gears that provide high strength and smooth motion. They require minimal maintenance, by following the procedures below on a quarterly basis the product will perform effectively.

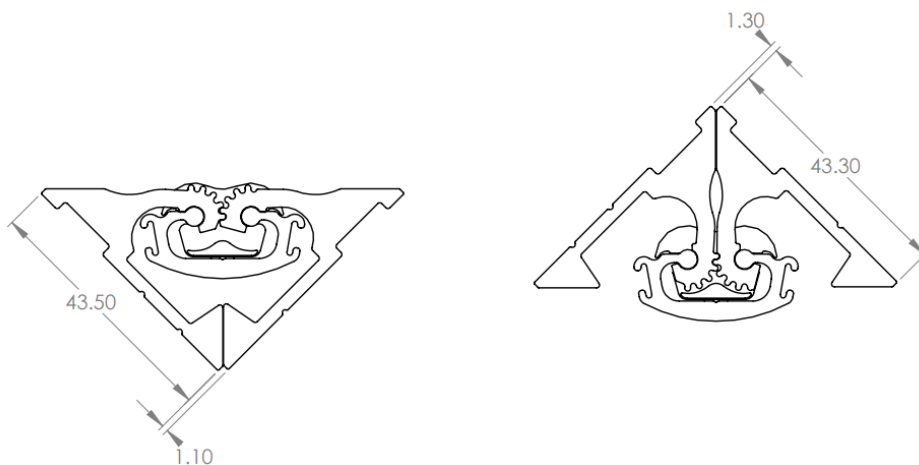
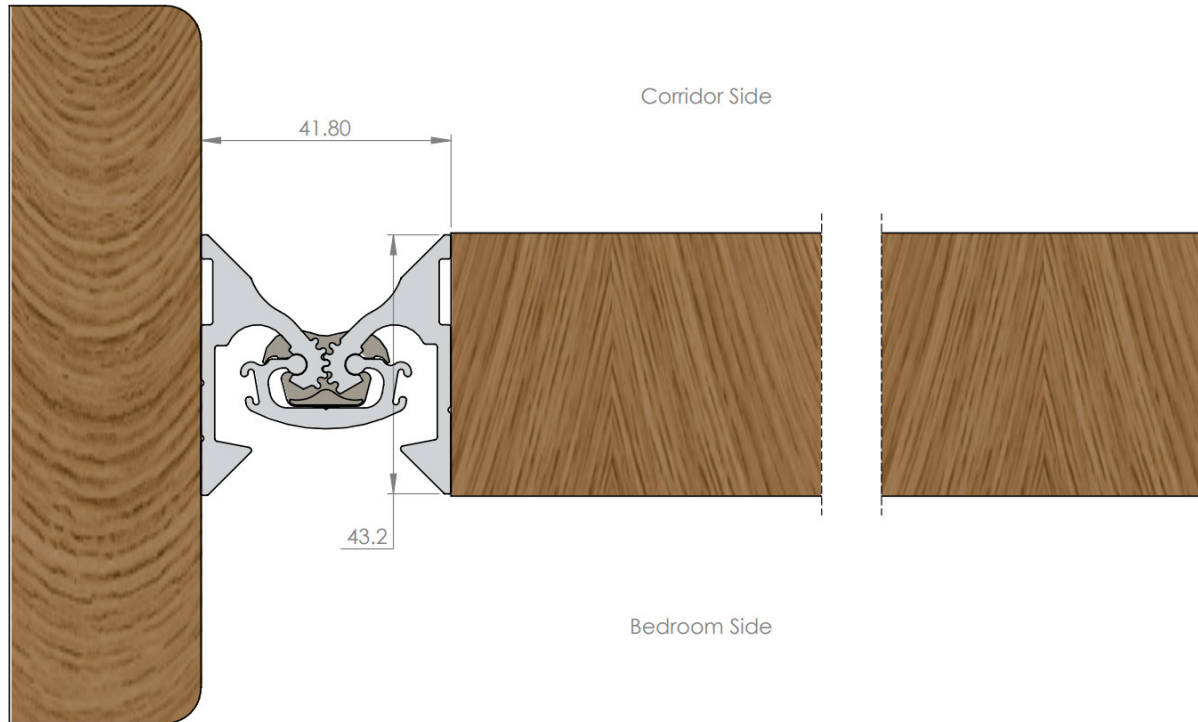
- Check the gears are free from dust/debris.
- Check the bearings are free from cracks.
- Check all fixings are present and tightened sufficiently.
- If dirty wipe down with warm soapy water.
- Check for any sharp edges caused by impact damage and file smooth if necessary.





Double Swing Hinge

Datasheet



Dimensions when open to 90 degrees

ABOUT HIPAC

At Hipac, we want the same thing as our clients – an environment where healthcare professionals can work productively, safely and efficiently to achieve the best possible patient outcomes. We work closely with our customers and partners to design, manufacture and supply superior products. With almost 40 years of experience, Hipac has the expertise to deliver premium solutions along with competent, trustworthy advice.

PO Box 797, 36 Long St. Goulburn NSW 2580, Australia
P. +61 2 4823 0000 E. info@hipac.com.au

SYDNEY | MELBOURNE | BRISBANE | ADELAIDE | PERTH

hipac.com.au

ABN 27 600 353 688