



## Electrically Modified Hinge

### Datasheet



#### Warranty Information

Electrically modified hinges are warranted to be free of manufacturing defects and should be tested prior to installation, poor installation may damage the wires and as such warranty will not apply once electrically modified hinge has been fitted

#### Testing

- ▶ Transfer wire tested to 3 million cycles.
- ▶ Electrical Transfer Hinge performance tested to 1.25 million cycles.
- ▶ Electrical Transfer Double Swing Hinge tested to Severe Duty Rating DD171 and performance tested to European Standard EN1935.
- ▶ Each conductor is capable of carrying 7 amps at 24 volts with a 16 amp inrush current for 820 milliseconds

#### Cleaning & Maintenance

- ▶ Check the gears are free from dust/debris.
- ▶ Check the bearings are free from cracks.
- ▶ Check all fixings are present and tightened sufficiently.
- ▶ If dirty wipe down with warm soapy water.
- ▶ Check for any sharp edges caused by impact damage and file smooth if necessary.

#### Product Codes

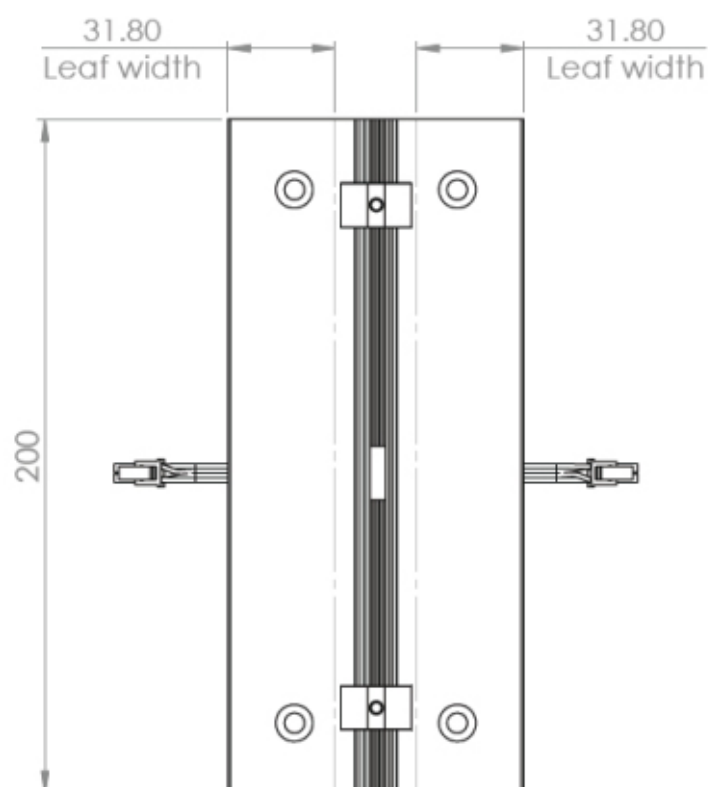
Description	4 Wire	8 Wire	12 Wire	16 Wire	20 Wire	24 Wire
Single Swing Electrically Modified Hinge 200mm [c/w 1.5m and 3m cables to suit]	117630	117767	117768	144182	114183	114184
Double Swing Electrically Modified Hinge 200mm [c/w 1.5m and 3m cables to suit]	119151	136766	136767	144185	144186	144187
Shrouded Double Swing Electrically Modified Hinge 200mm [c/w 1.5m and 3m cables to suit]	142841	142842	142843	144188	144189	144190



### Single Swing Electrically Modified Hinge 200mm

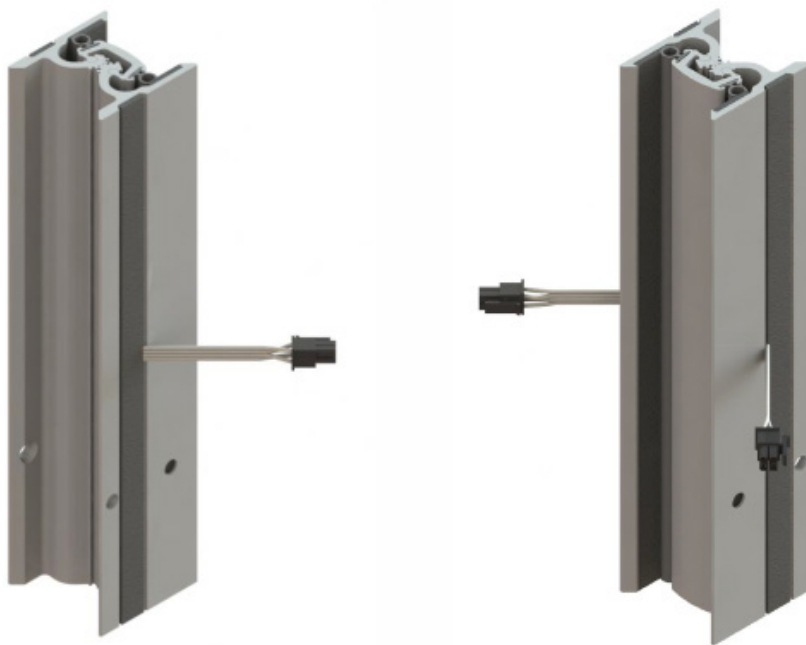


### Detail Single Swing Electrically Modified Hinge 200mm

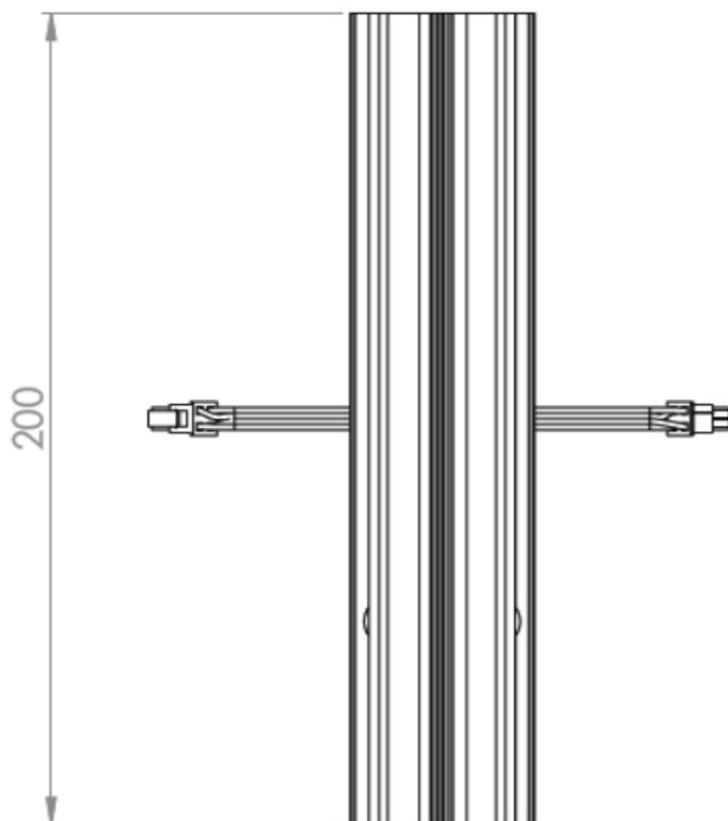




**Double Swing Electrically Modified Hinge 200mm**



**Detail Double Swing Electrically Modified Hinge 200mm**

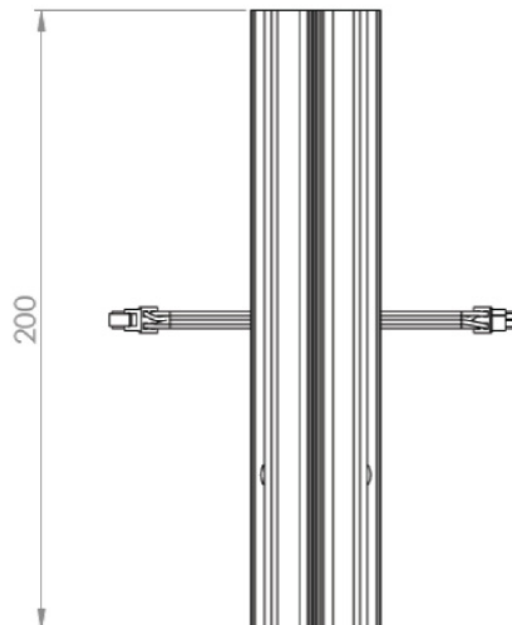




### Shrouded Double Swing Electrically Modified Hinge 200mm



### Detail Shrouded Double Swing Electrically Modified Hinge 200mm



#### ABOUT HIPAC

We are an Australian healthcare company that guarantees to stand behind all our medical products, both manufactured and imported, because we're here for the life of our products and clients.

PO Box 797, 36 Long St. Goulburn NSW 2580, Australia

P. +61 2 4823 0000 E. [info@hipac.com.au](mailto:info@hipac.com.au)

SYDNEY | MELBOURNE | BRISBANE | ADELAIDE | PERTH

[hipac.com.au](http://hipac.com.au)

ABN 27 600 353 688