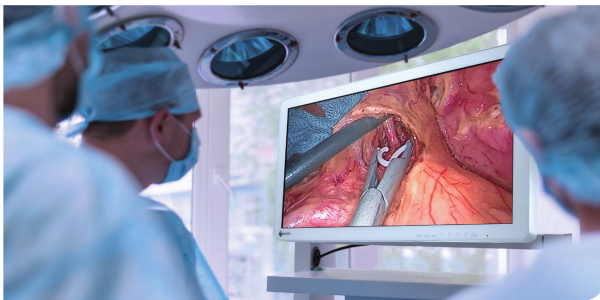


## CuratOR EX2721

A 27-inch widescreen surgical monitor with full HD display that faithfully reproduces surgical images

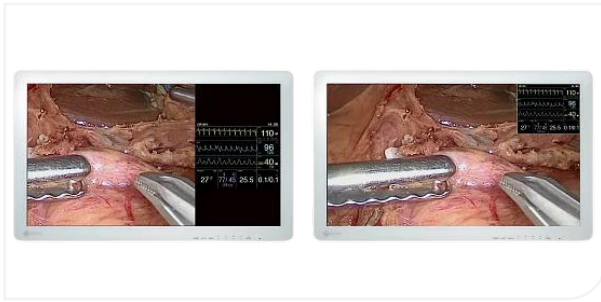


### High Definition Surgical Display

This monitor uses an energy-efficient LED backlight with a high brightness of 900 cd/m<sup>2</sup>. It displays in full HD resolution (1920 x 1080) and faithfully reproduces surgical images in high definition for endoscopy and microsurgery.

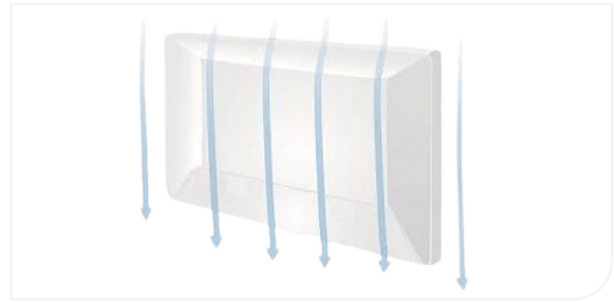
### Fully Flat Design for Safety and Hygiene

Operating rooms contain various medical devices that are arranged by the type of surgery being undertaken. In consideration of safety, EIZO's surgical monitors adopt rounded corners. Furthermore, the front is covered with a fully flat protective glass with IP45 for protection against foreign material and splashes (the whole monitor has an IP32 rating). With the attached cable cover, cables can also be neatly stored out of sight for increased safety and hygiene.



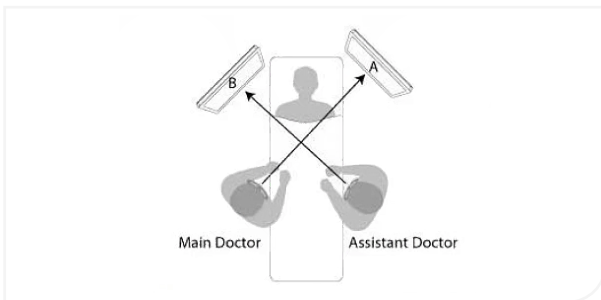
## View Multiple Signals on the One Screen

Two signal sources can be viewed side by side on one screen using PoP (Picture Out Picture) or with one in a corner above the main signal display using PiP (Picture in Picture). The size and position of both windows are adjustable when using PoP or PiP, making it ideal for viewing multiple modalities simultaneously.



## Clean and Quiet Fanless Design

The monitor has superior heat-dissipating technology, allowing it to stay cool without a fan. This offers an extremely quiet monitor that does not disrupt airflow in the operating room. Additionally, because there are no ventilation holes, cleaning is a breeze, so the monitor can easily be disinfected for surgical purposes.



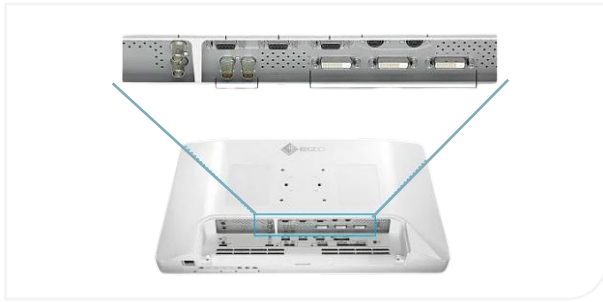
## 180° Rotation and Mirroring

Regardless of the orientation of the surgical camera, you can rotate the displayed image by 180° or mirror it to find the perfect operating view. This allows you to match the image with the line of sight of surrounding assistants and surgeons, improving convenience in the operating room.



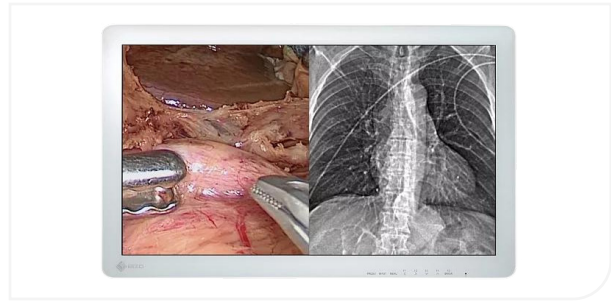
## Protective Glass

The monitor has protective glass with a hardness of 9H to protect against dirt and impacts.



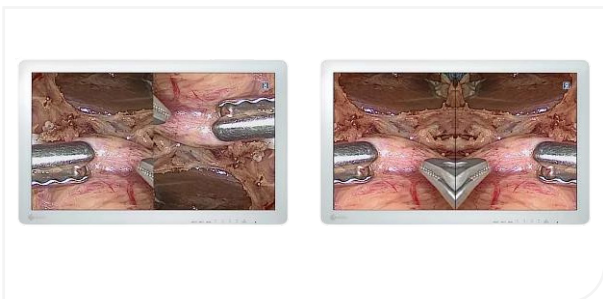
### Various I/O Signal Support

The monitor supports a number of video input/output signals for connecting to various types of modality equipment. Furthermore, GPI and RS-232C allows you to externally control input signals and screen rotation so that you can change the display in conjunction with the settings of the surgical equipment being used.



### Adjust Screens Individually

When displaying two signal sources side by side on the same screen, each image's display mode (gamma 1.8 - 2.6 or DICOM® Preset Mode) can be adjusted without interfering with the other image. This is perfect for multi-modality use, where endoscope, CT, and MRI images can all be accurately displayed on the same monitor.



### Independent Rotation and Mirroring

When displaying two signals at the same time, each image can be rotated 180° or mirrored independently from the other.



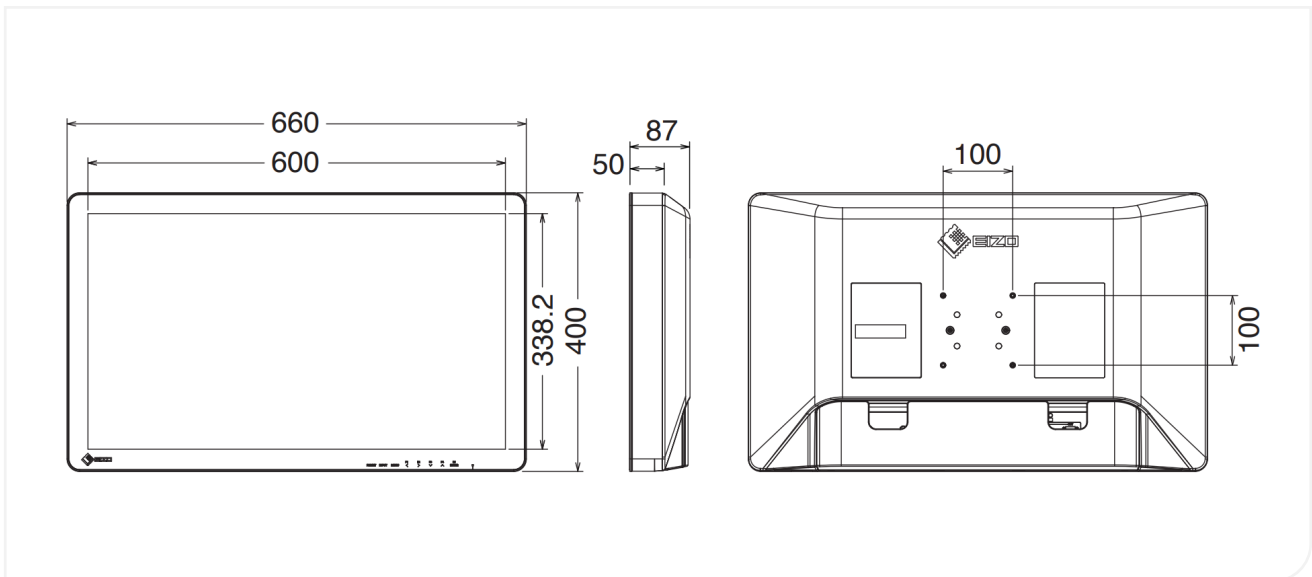
### Rest Assured with Medical Qualifications

In order to realize safe and reliable monitors that can be used with confidence at any medical institution, EIZO acquires various medical standards and safety/EMC standards. This monitor complies with the latest standard IEC 60601-1-2 4th edition.

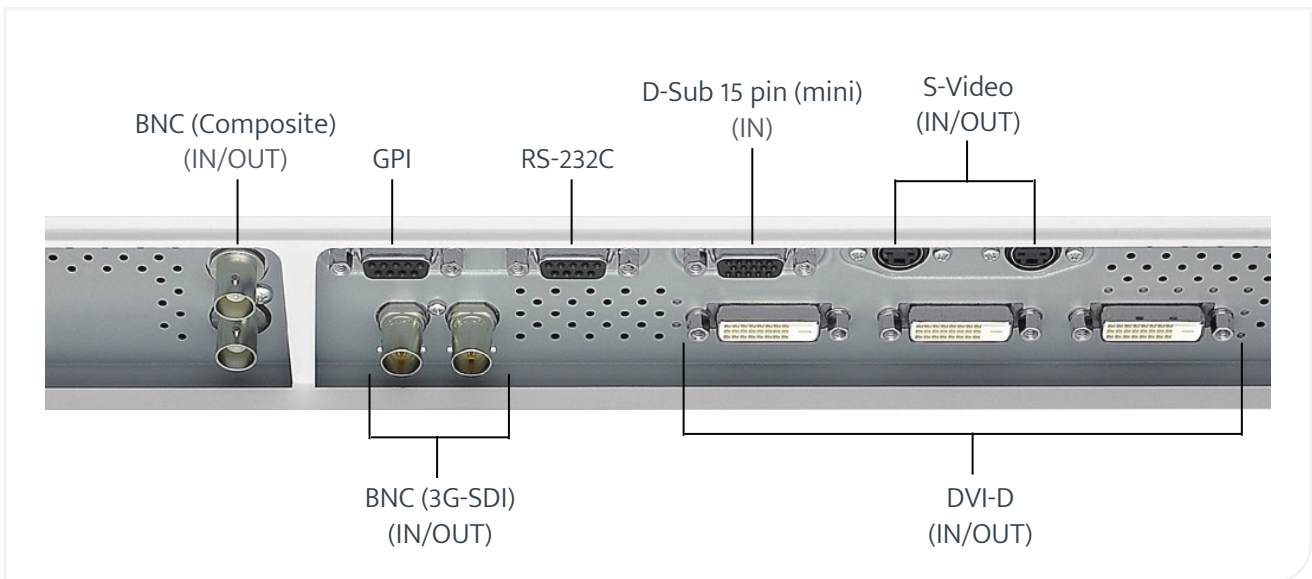
## Specifications

Panel	Type	Color (IPS)
	Backlight	LED
	Size	68.6 cm / 27.0"
	Native Resolution	1920 x 1080 (16:9 aspect ratio)
	Viewable Image Size (H x V)	598 x 336 mm
	Pixel Pitch	0.311 x 0.311 mm
	Display Colors	10-bit colors (SDI / DisplayPort / HDMI): 1.07 billion (maximum) colors 8-bit colors: 16.77 million colors
	Viewing Angles (H / V, typical)	178° / 178°
	Brightness (typical)	900 cd/m <sup>2</sup>
	Contrast Ratio (typical)	1000:1
	Response Time (typical)	14 ms (on / off)
Video Signals	Input Terminals	BNC (3G-SDI), DVI-D x 2 (HDCP 1.4), D-Sub 15 pin (mini), S-Video, BNC (Composite)
	Output Terminals	BNC (3G-SDI), DVI-D, S-Video, BNC (Composite)
	Digital Scanning (H/V)	15 - 75 kHz / 24 - 60 Hz
	Analog Scanning Frequency (H / V)	15 - 80 kHz / 24 - 85 Hz
	Sync Formats	Separate, Composite, Sync on green
Power	Power Requirements	AC 100 - 240 V: 50 / 60 Hz
	Maximum Power Consumption	79 W
Features & Functions		Remote control (RS-232C, GPI)
Physical Specifications	Net Weight (Without Stand)	8.5 kg
	Hole Spacing (VESA Standard)	100 x 100 mm, M4, depth 5 - 9 mm
Environmental Requirements	Degree of Protection	IP45 (Front), IP32 (Rear)
Certifications & Standards (Please contact the EIZO group company or distributor in your country for the latest information.)		CE (Medical Device), EN60601-1, ANSI/AAMI ES60601-1, CSA C22.2 No. 601-1, IEC60601-1, VCCI-A, FCC-A, CAN ICES-3(A), RCM, RoHS, China RoHS, WEEE, CCC, EAC, BIS
Warranty		2 Years
FDA		Class I
Supplied Accessories (May vary by country. Please contact EIZO for details.)		AC power cord, AC adapter, Cable cover, Utility Disk (PDF installation manual), instructions for use

## Dimensions (Unit:mm)



## Connector



### ABOUT HIPAC

Operating at the forefront of healthcare, we strive to redefine what's possible. We provide superior products, design expertise and total solutions to help create environments where nothing stands in the way of patient care.

#### Contact information

1800 75 93 93

info@hipac.com.au

www.hipac.com.au

 **Hipac**  
We're here for life