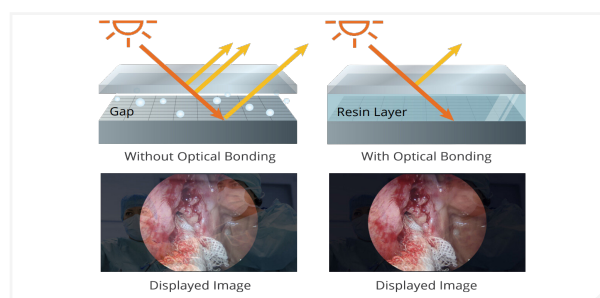
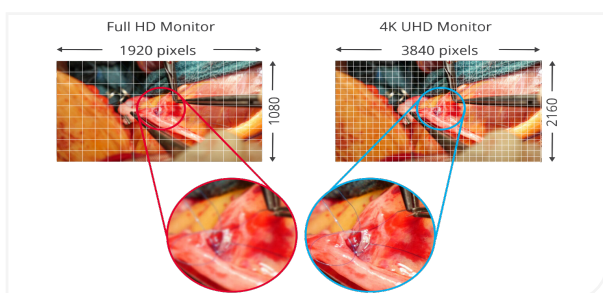


CuratOR EX3242

A 27-inch widescreen surgical monitor with full HD display that faithfully reproduces surgical images

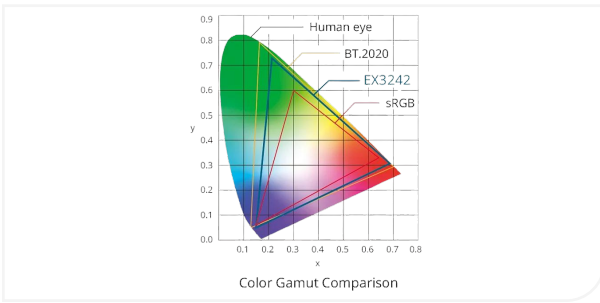


4K UHD and High Brightness

The monitor uses an energy-efficient LED backlight with a high brightness of 850 cd/m². The high resolution of 3840 x 2160 is four times the size of full HD and faithfully reproduces 4K endoscope and operating microscope images in Ultra High Definition.

Reduced Reflections

Reflections on the screen of LCD monitors are caused when external light hits the screen and reflects off of the protective glass and layer of air at different refractive indices. Optical bonding removes the layer of air in order to lower the difference in refractive indices. This softens the reflections and produces a clear, highly visible image without affecting contrast.



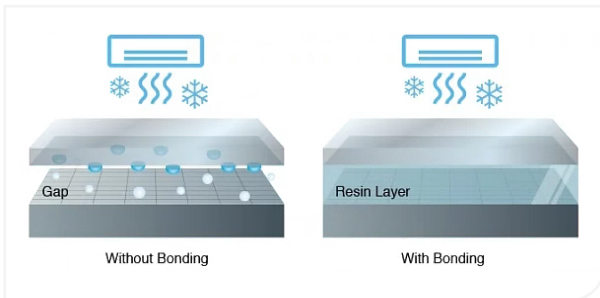
Wide Color Gamut for Distinguishing Tones

During procedures, the operating surgeon needs to be able to differentiate between varying colour tones. The monitor supports the BT.2020 4K video colour standard to ensure that subtle differences between shades of reds and yellows captured by BT.2020-supported cameras are distinguishable on the screen.



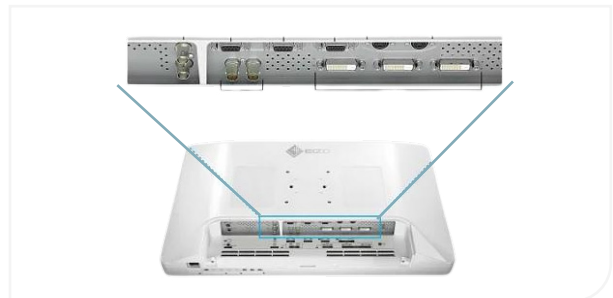
View Two Signals on One Screen

Two separate signal sources can be viewed simultaneously on one monitor side by side using the PbyP (Picture-by-Picture) or one displayed within an inset window over the other with the PinP (Picture-in-Picture) function. This is useful in cases where vitals or ultrasound endoscopes need to be monitored simultaneously in addition to surgical images.



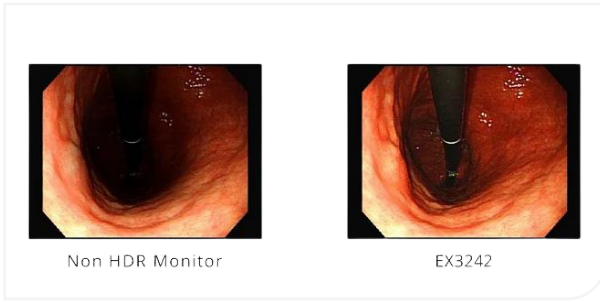
Condensation Prevention

Optical bonding prevents condensation from forming between the LCD panel and protective glass. This allows the monitor to maintain high visibility in harsh environments.



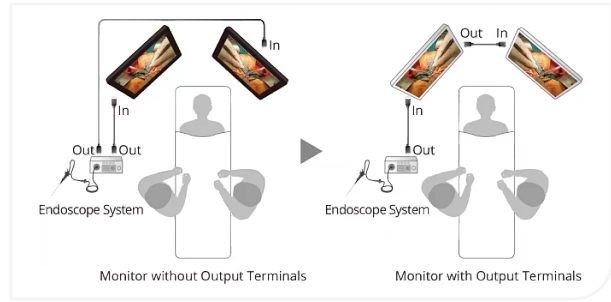
Streamlined Connectivity

With BNC (12G-SDI), and DisplayPort or HDMI, 4K UHD images are displayed at 60 frames per second with a single cable over various modalities. When connected via BNC (12G-SDI), stable transmission is achieved even over long distances of 30 meters.



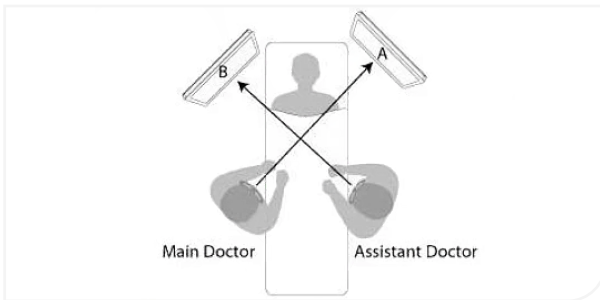
HDR Compatibility

HDR (High Dynamic Range) approximates the human perception of colour and light as content on a display. The monitor’s perceptual quantization (PQ) curve and hybrid log-gamma (HLG) support HDR, ensuring images from HDR endoscope cameras display accurate blacks and closely resemble human vision system.



Output Images Directly to Multiple Monitors

The monitor is also equipped with BNC (12G-SDI), DisplayPort, and DVI output terminals so input video can be passed through and output directly to the next monitor. The same image is displayed on multiple monitors, making information sharing among medical staff smooth in the operating room while alleviating excess cabling.



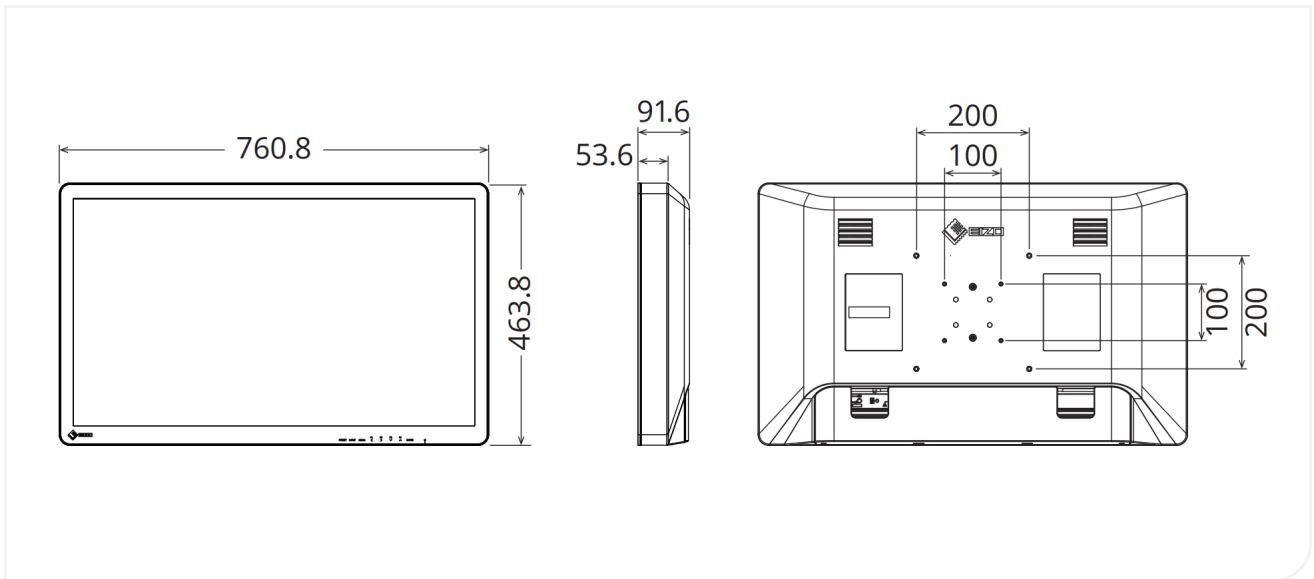
180° Rotation and Mirroring

Regardless of the orientation of the surgical camera, you can rotate the displayed image by 180° or mirror it to find the perfect operating view. This allows you to match the image with the line of sight of surrounding assistants and surgeons, improving convenience in the operating room.

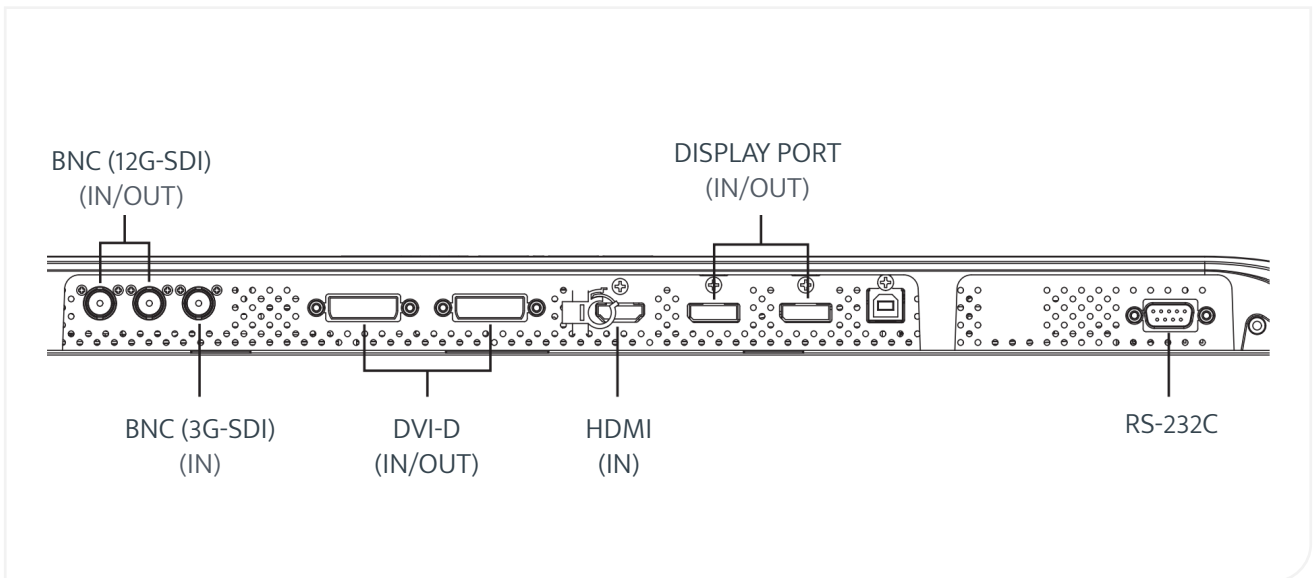
Specifications

Model Variations		EX3242-WT: without stand, white
Panel	Type	Color (IPS)
	Backlight	LED
	Size	32.0" (81.3 cm)
	Native Resolution	3840 x 2160 (16:9 aspect ratio)
	Viewable Image Size (H x V)	708 x 399 mm
	Pixel Pitch	0.185 x 0.185 mm
	Display Colors	10-bit colors (SDI / DisplayPort / HDMI): 1.07 billion (maximum) colors 8-bit colors: 16.77 million colors
	Viewing Angles (H / V, typical)	178° / 178°
	Brightness (typical)	850 cd/m ²
	Contrast Ratio (typical)	1800:1
	Response Time (typical)	20 ms (black-white-black)
	Color Gamut (typical)	BT.2020 emulation
Video Signals	Input Terminals	DisplayPort (HDCP 1.3), HDMI (HDCP 2.2/1.4), BNC (12G-SDI), BNC (3G-SDI), DVI-D (HDCP 1.4)
	Output Terminals	DisplayPort, BNC (12G-SDI), DVI-D
	Digital Scanning Frequency (H / V)	18 - 136 kHz / 23 - 71 Hz
Power	Power Requirements	AC 100 - 240 V: 50 / 60 Hz
	Maximum Power Consumption	199 W
Features & Functions		Remote control (RS-232C), PbyP, PinP, 180° rotation, Mirroring, Optical Bonding
Physical Specifications	Net Weight (Without Stand)	13.2 kg
	Hole Spacing (VESA Standard)	200 x 200 mm, M6, depth 7 - 12 mm / 100 x 100 mm, M4, depth 7 - 11 mm
Environmental Requirements	Degree of Protection	IP45 (Front), IP32 (Rear)
Certifications & Standards (Please contact the EIZO group company or distributor in your country for the latest information.)		CE / UKCA (Medical Device), ANSI/AAMI ES60601-1, CAN/CSA-C22.2 No. 60601-1, IEC/EN60601-1, VCCI-A, FCC-A, CAN ICES-3(A), RCM, RoHS, China RoHS, WEEE, CCC, EAC, BIS
Warranty		3 Years
FDA		Class I
Supplied Accessories (May vary by country. Please contact EIZO for details.)		AC power cord, AC adapter, screws for VESA adapter x 8, Cable cover, Utility Disk (PDF installation manual), instructions for use

Dimensions (Unit:mm)



Connectors



ABOUT HIPAC

Operating at the forefront of healthcare, we strive to redefine what's possible. We provide superior products, design expertise and total solutions to help create environments where nothing stands in the way of patient care.

Contact information

1800 75 93 93

info@hipac.com.au

www.hipac.com.au

 **Hipac**
We're here for life