

CLIK™ Load Release Products

The CLIK™ system is designed so that a vertical load over 10kg (per bracket) will release the fixing. For items with two fixing brackets, such as the wardrobe rail, the brackets should release at a maximum load of 20kg (10kg per bracket). However, in practice, the actual release point will vary depending on where the load is applied on the fixture, typically falling between 10kg and 20kg. Most tests will indicate a release point close to 15kg.

CLIK™ products should be installed by a tradesperson equipped to ensure a professional and risk free installation. Unless specifically stated otherwise, the screws provided with all Hipac CLIK™ products are stainless steel for corrosion resistance and are 6 lobe-pin anti-tamper screws. Under no circumstances should the screws be substituted with conventional fixings. Only use the anti-tamper screws provided. Do not use impact drivers.

Table of Contents

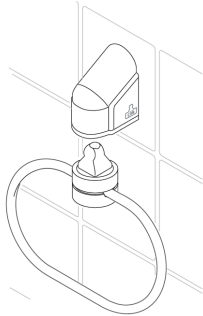
Wall Bracket Mounted Products	2
Fitting the Wall Mount Bracket	3
Wall Fix Curtain Track	6
Top Fix Bracket - Component Parts	7
Top Fix Bracket Products - Wardrobe Rail	9
Top Fix Bracket - Shower Rail Extension Assembly	10

Tools required

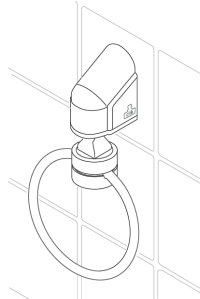
- drill
- hex socket screwdriver
- T20 Pin-Torx Bit
- T25 Pin-Torx Bit
- T10 Pin-Torx Bit
- drill bits 5.5mm
- pencil
- straight edge
- combination square
- tape measure

Wall Bracket Mounted Products

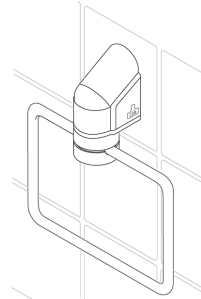
Oval Towel Ring



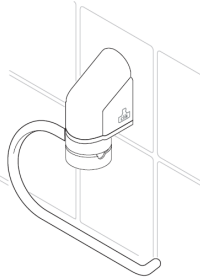
Round Towel Ring



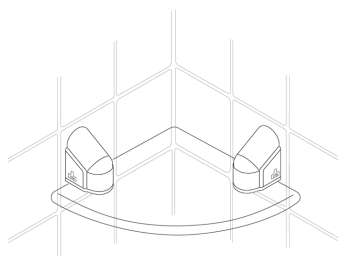
Square Towel Ring



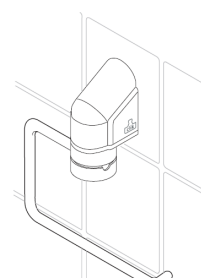
Oval Toilet Roll Holder



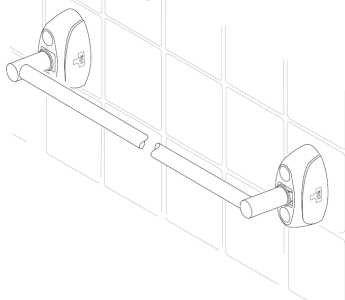
Corner Shelf



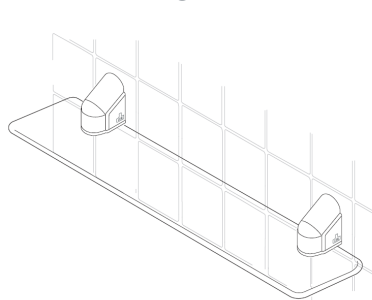
Square Toilet Roll Holder



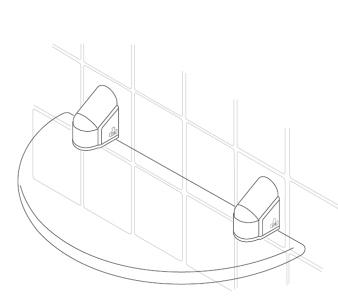
Conventional Towel Rail (Top Fix Bracket)



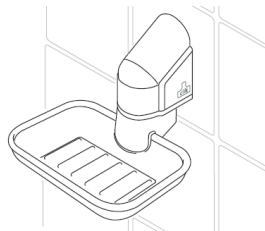
Straight Shelf



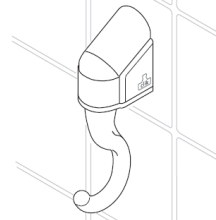
Semi-Circular Shelf



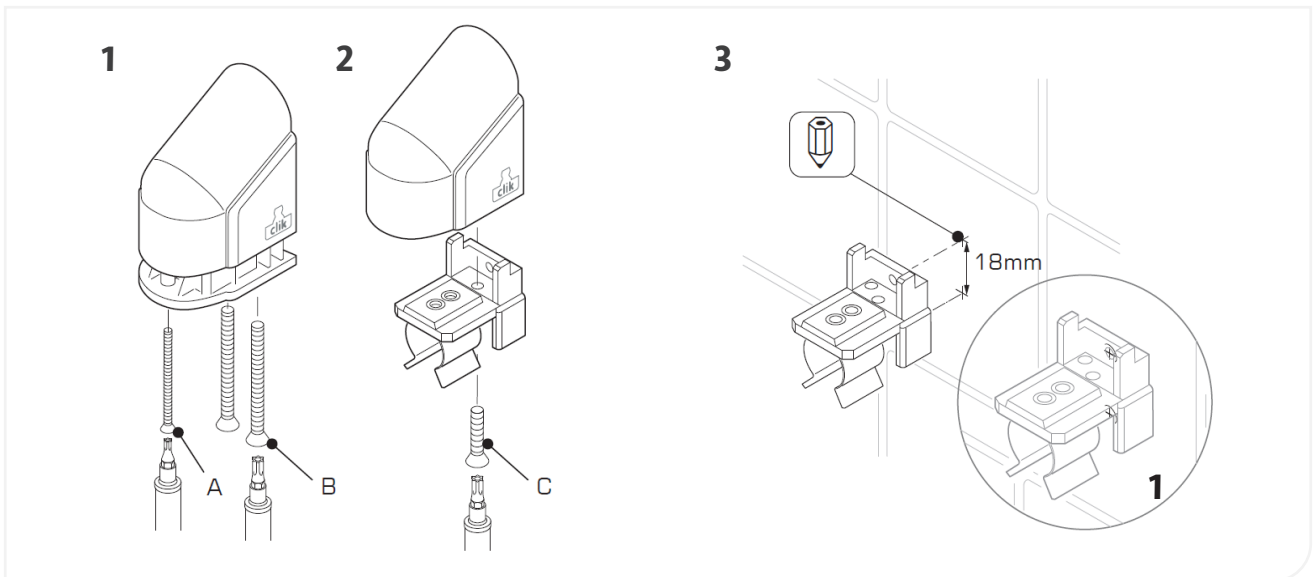
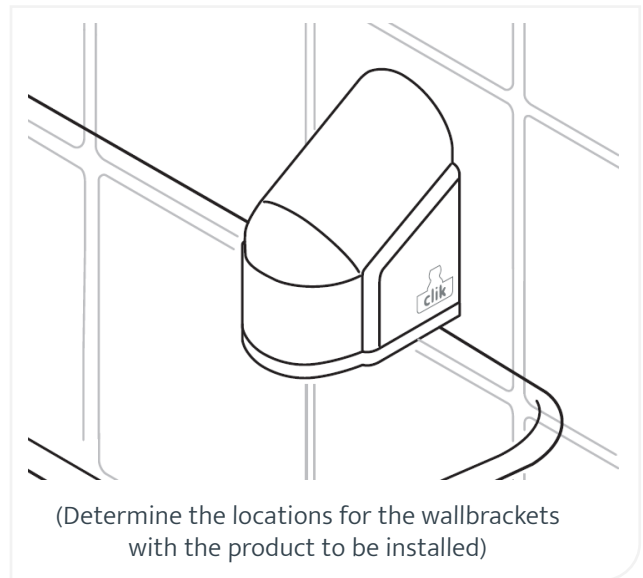
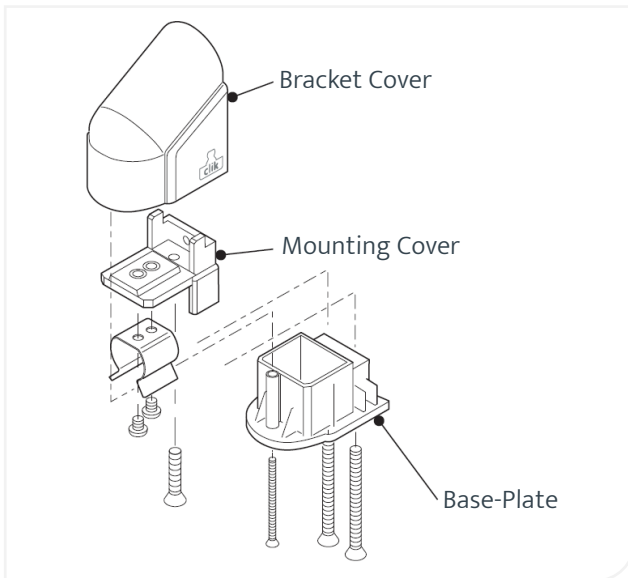
Soap Dish



Coat Hook

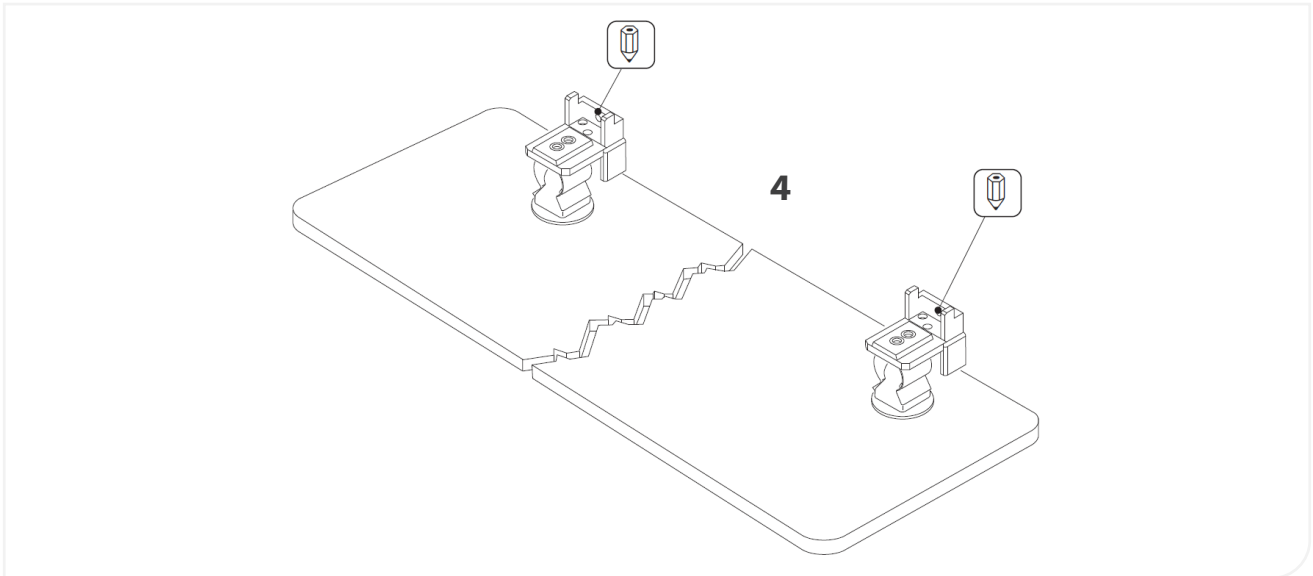


Fitting the Wall Mount Bracket

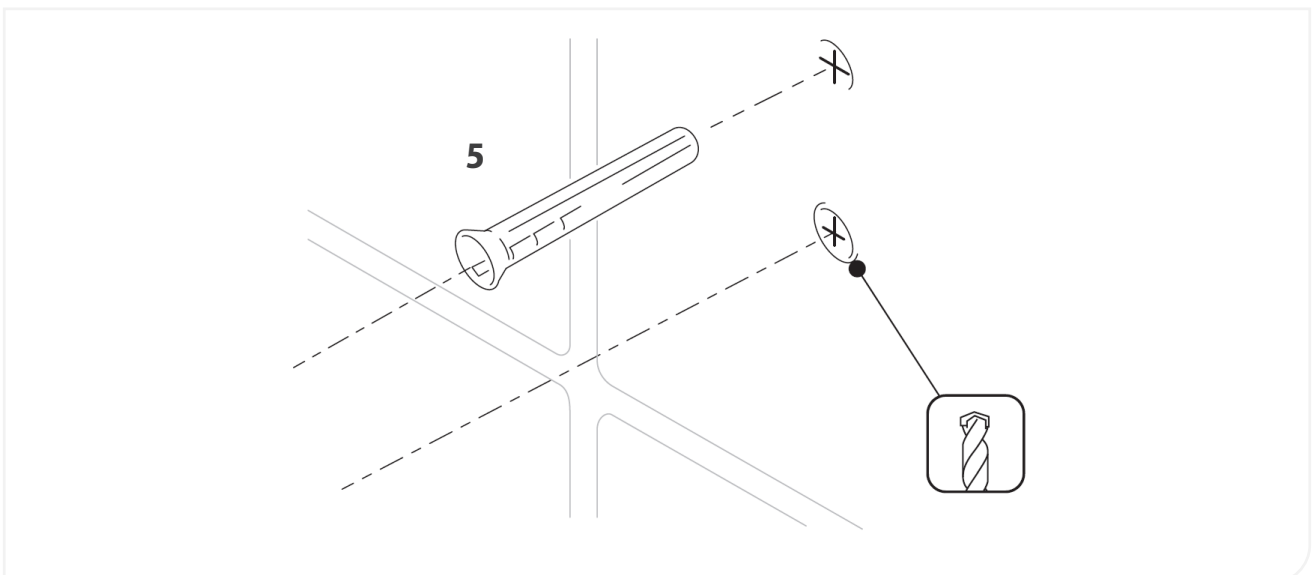


1. Disassemble the wall bracket and unscrew the T10 Torx Screw A at the front of the bracket. Using a T20 Pin Torx driver, remove the remaining two machine screws B to separate the base plate from the mounting bracket.
2. Remove the machine screw C and slide the bracket cover off.
3. Using the mounting bracket as a guide, mark the position of the uppermost mounting screw. Measure and mark a line 18mm vertically down from the centre of this point for the lower fixing point. Before drilling, use the bracket to conform alignment inset.

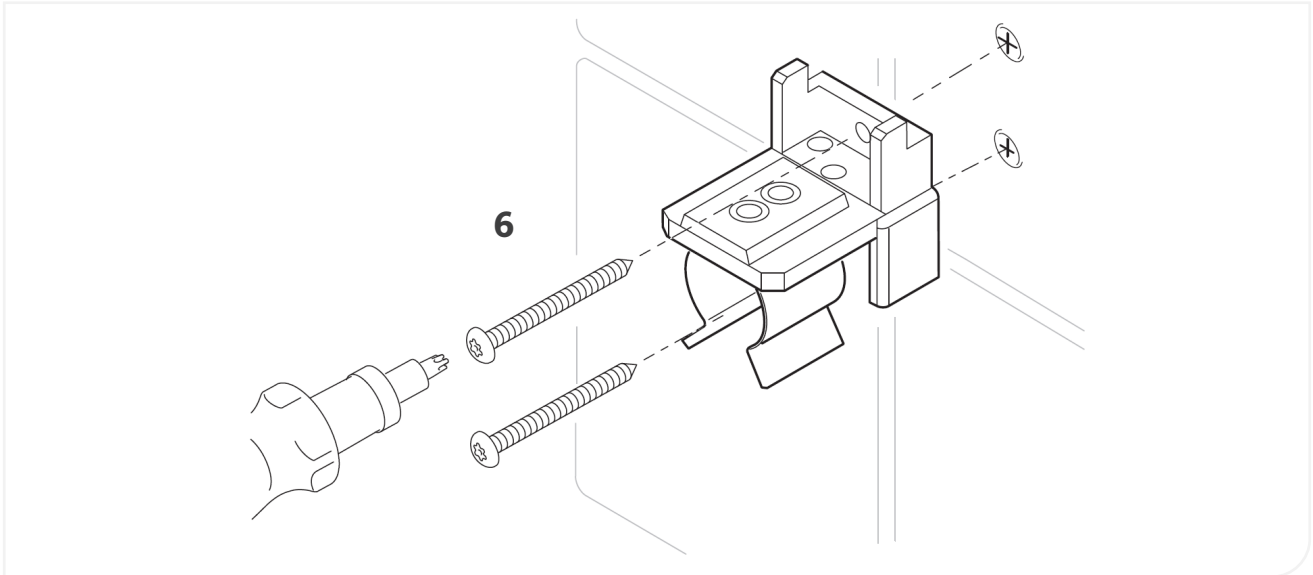
- Where more than one bracket is used in installation, it is good practice to click the item into the spring clips and offer up the assembly into position before marking. Mark the position of the uppermost mounting screw on each bracket. Ensure correct alignment prior to drilling.



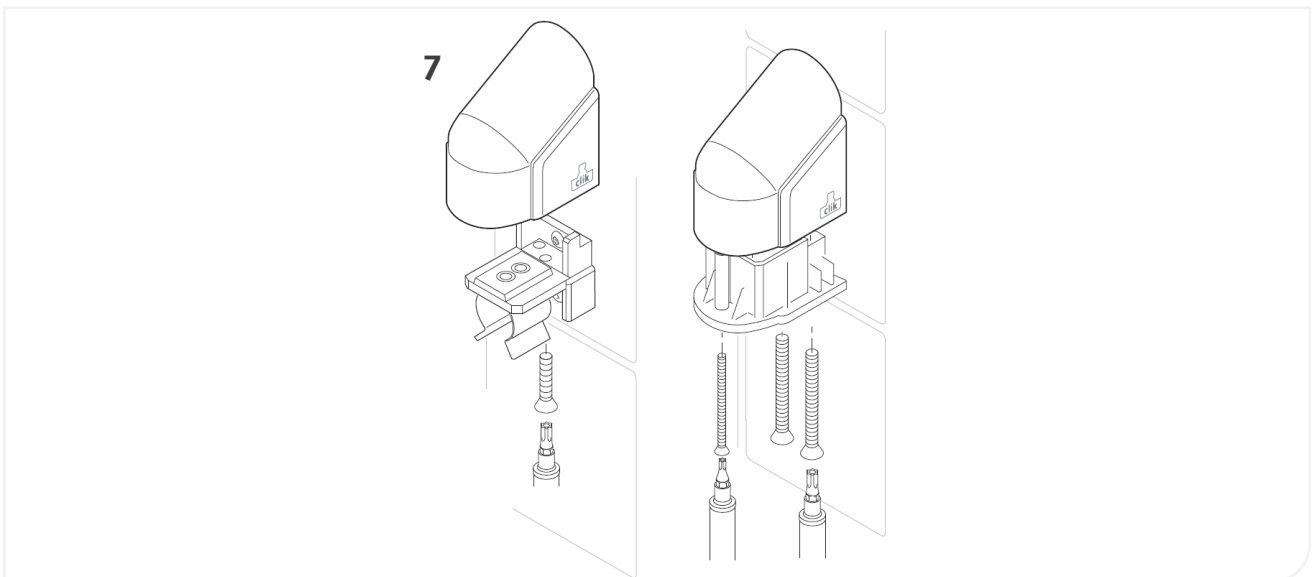
- When mounting to a timber laminated surface, use a 3mm HSS drill bit to create pilot holes for the screws. When mounting onto a wall (or tiled surface), use a 5.5mm masonry bit for the wall plugs provided.



- Fit the bracket using the fixings supplied. Ensure the mounting bracket is securely fastened to the wall.



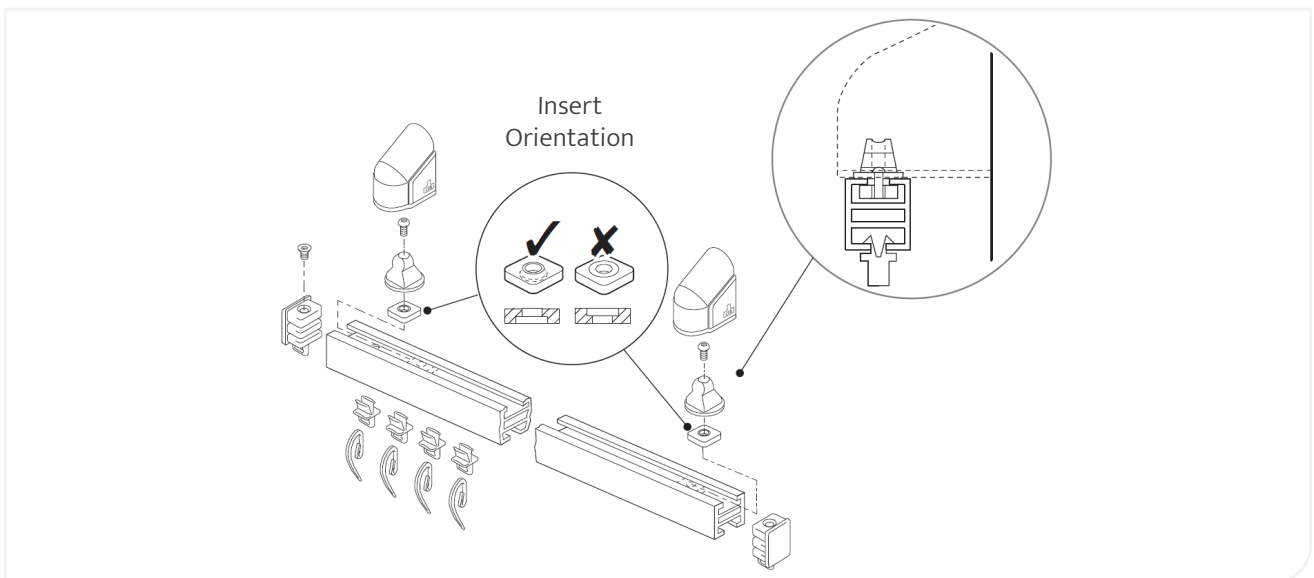
- Refit the cover and base-plate using the screws provided.



i IMPORTANT NOTE: It is imperative that there are no gaps between the wall bracket cover and the mounting surface.



Wall Fix Curtain Track

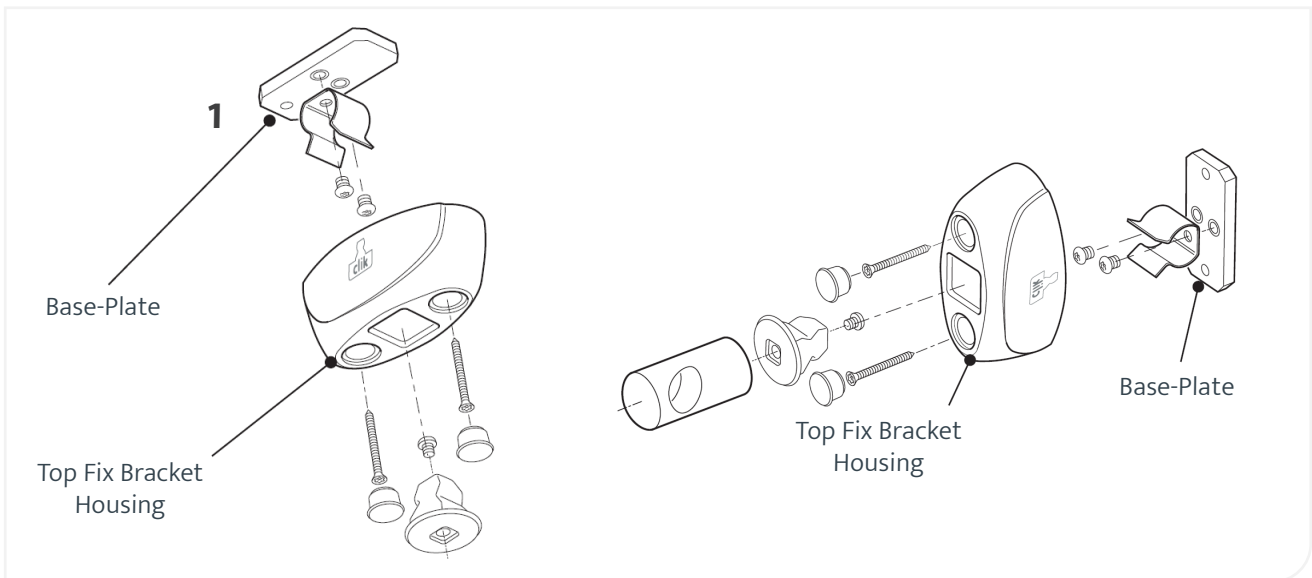


i IMPORTANT NOTE: When fixing the curtain track hanger block, ensure they are fitted with the tapex insert in the correct orientation.

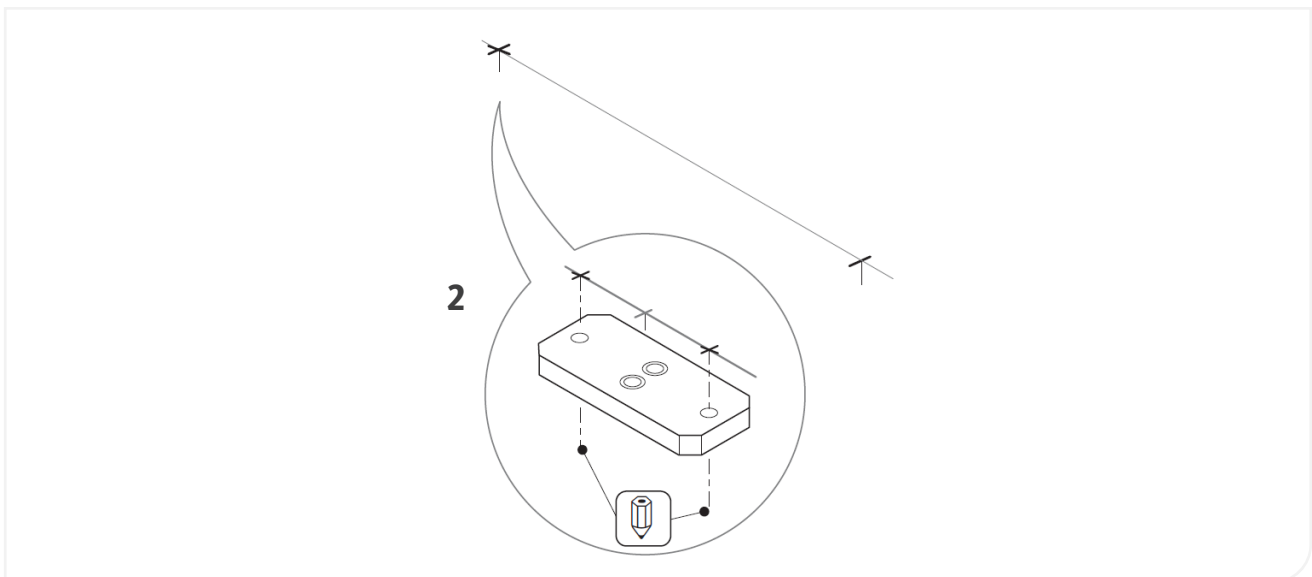
Top Fix Bracket

Component Parts

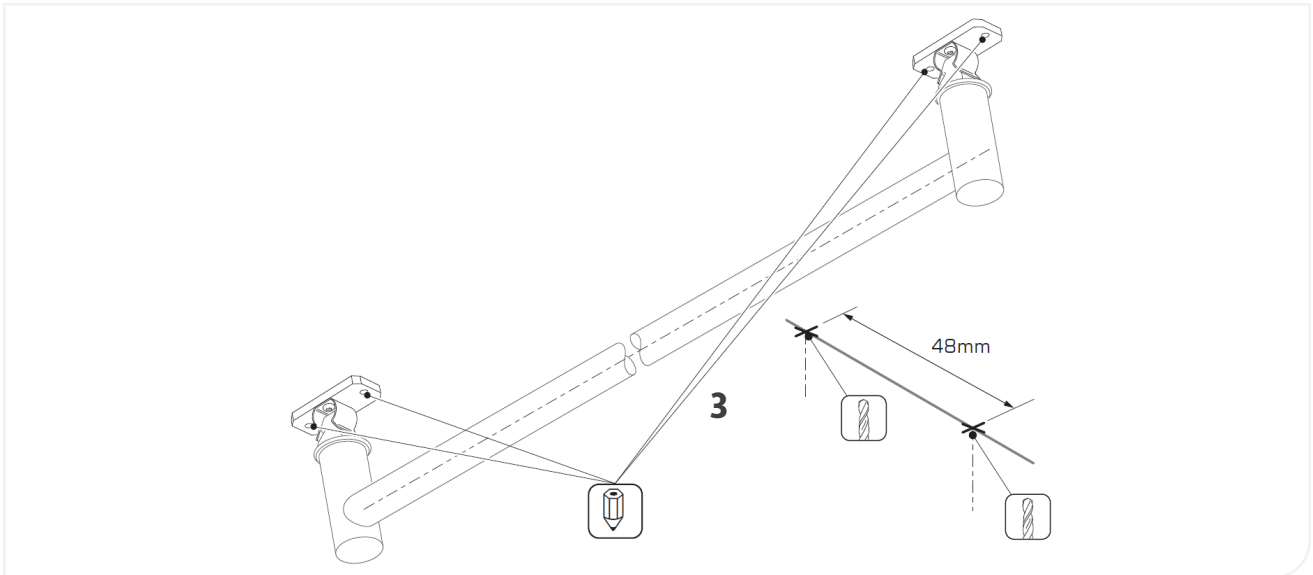
1. Separate the base-plate from the bracket housing. (Determine the location for the top fix bracket with the product to be installed).



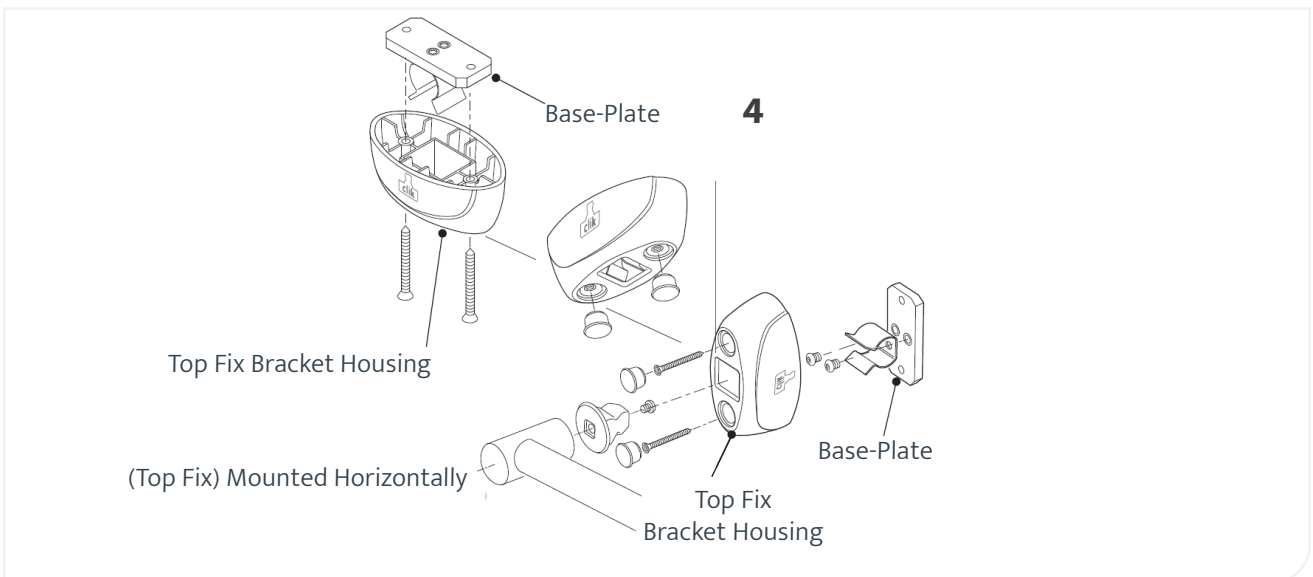
2. Where more than one bracket is used in the installation, it is good practice to click the item into the spring clips and offer the assembly up to mark their position. Ensure correct alignment prior to drilling.



- Having first established a suitable datum line for the product to be installed, use the base-plate as a template to mark the position of the fixings for the first bracket.



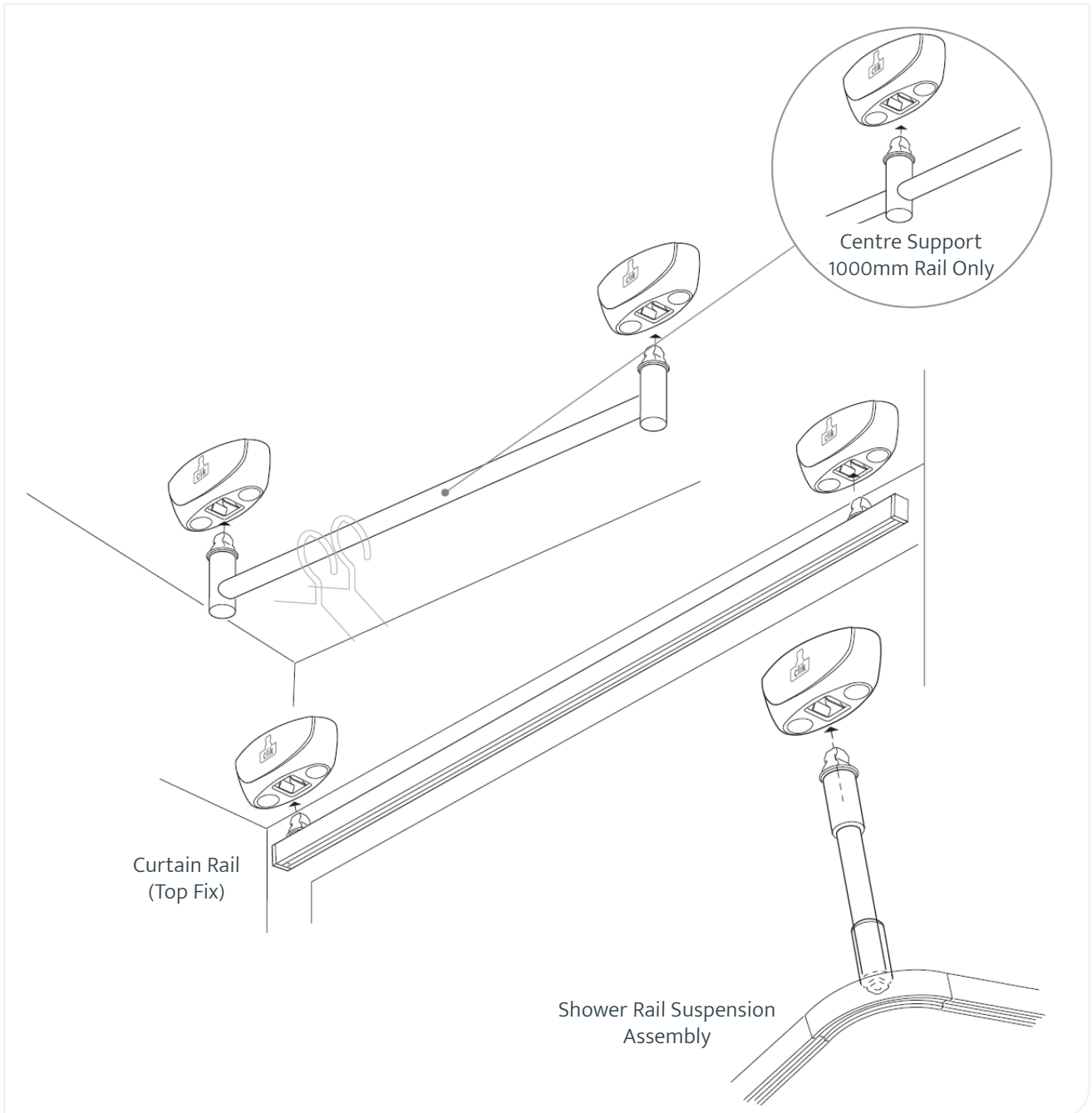
- It is essential when mounting to a wood or laminate surface to drill a pilot hole using a suitable drill bit.



- Insert the mounting bracket into the housing and offer up the assembly to the mounting surface and secure it into position with the screws provided. Ensure the housing fits flush against the surface on which it is mounted. Insert the screw covers.

Top Fix Bracket Products

Wardrobe Rail



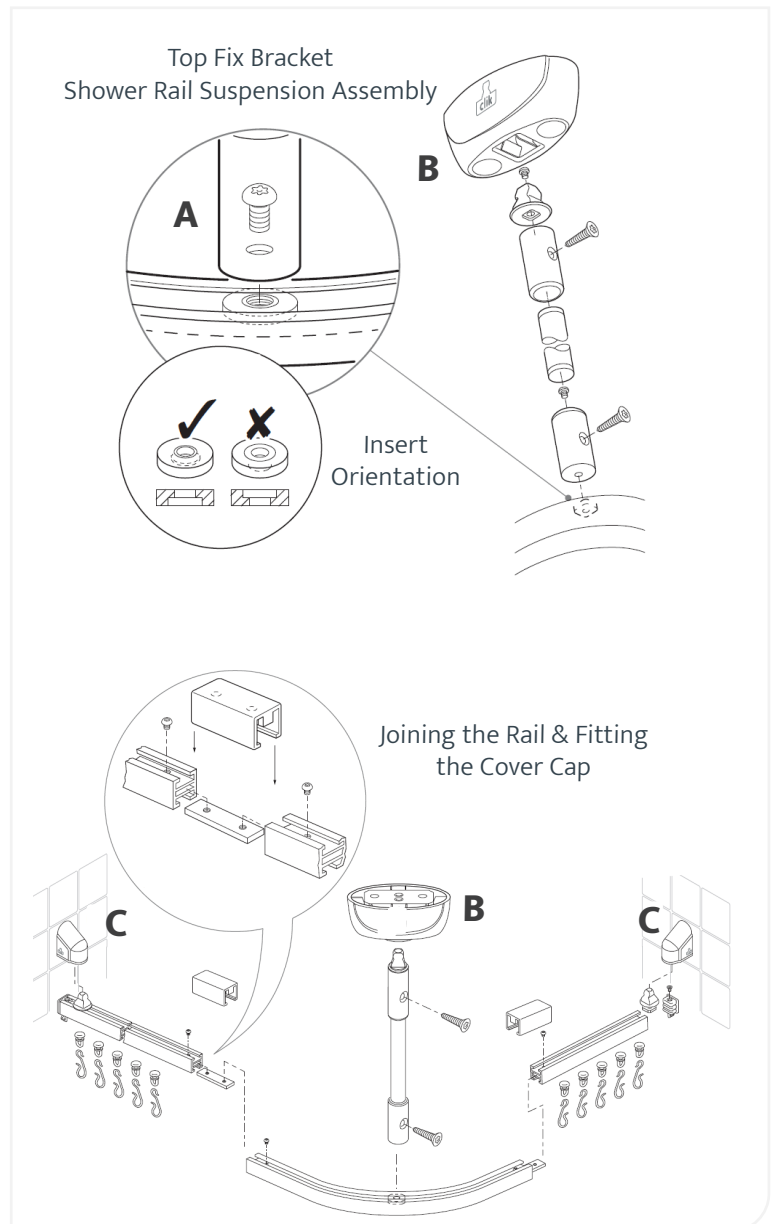
Top Fix Bracket

Shower Rail Extension Assembly

1. Cut suspension pole to the required length.
2. Slide on both end caps to mark fixing holes.
3. Remove the end caps and, using a suitable bit, drill pilot holes into the pole.
4. Secure the top end cap to the pole using the pin torx screws provided.
5. Secure the bottom end cap to the glide block in the track as illustrated A.



IMPORTANT NOTE: When fixing the curtain track hanger block, ensure they are fitted with the tappex insert in the correct orientation. See inset at A.



6. Insert the pole assembly into the bottom end cap and secure using screws provided.
7. Click top fix bracket B on top of pole assembly.
8. Click complete track assembly into the two mounted wall fix brackets C. Hold up and mark the fixing positions for the top fix bracket B and secure in position with fixings provided.
9. Check assembly collapses under load.

Disclaimer:

All products must be fitted as per the directions detailed in the individual product Installation Instruction Document. Hipac takes no responsibility for incorrect installation/operation of the product. By purchasing this product, you are confirming that the product will be fitted as per the instructions.

Please note that Hipac offers a range of measures designed to reduce the risk of self-harm or suicide and does not offer any guarantee that it will not take place. The solutions have been designed as a deterrent only.

ABOUT HIPAC

Operating at the forefront of healthcare, we strive to redefine what's possible. We provide superior products, design expertise and total solutions to help create environments where nothing stands in the way of patient care.

Contact information

1800 75 93 93



info@hipac.com.au



www.hipac.com.au



We're here for life