

INTAGlaze Privacy Vision Panel



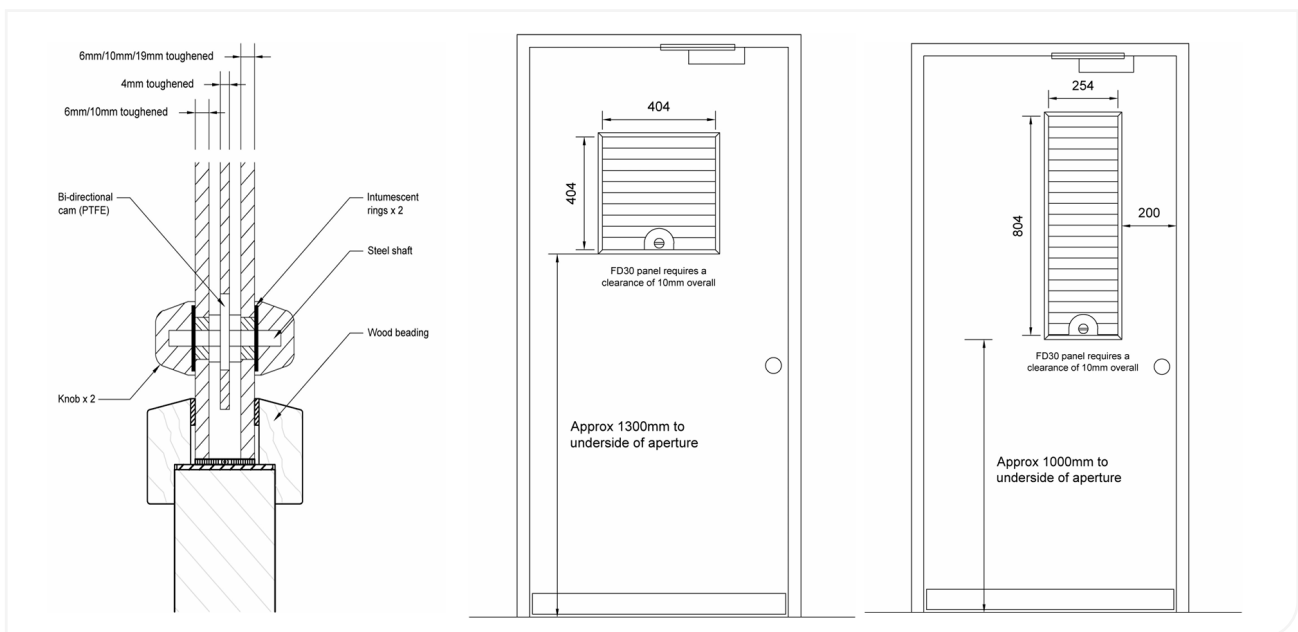
INTAGlaze is a tried and tested vision panel that ensures the security and dignity of both staff and service users. The quiet, manually operated panel requires absolutely no wiring or mains power.

Size (Special sizes available)	Rectangular	254 x 804mm
	Square	404 x 404mm
Finish (Optional: upgrade to toughened laminated glass e.g. 10.4mm thickness [other thicknesses tbc].)	22mm Panel	6mm toughened glass on both sides
	26mm Panel	6mm toughened glass on staff side, 10mm toughened glass on patient side
	30mm Panel	10mm toughened glass on both sides
	39mm Panel	10mm toughened glass on staff side, 19mm toughened glass on patient side
Ironmongery options	Standard	8mm key, lifeline key, thumb turn / knob.
Fixing	As per manufacturer's recommendations	
Testing	Cycle tested to greater than 40,000 cycles (10 years typical use)	

INTAGlaze Benefits

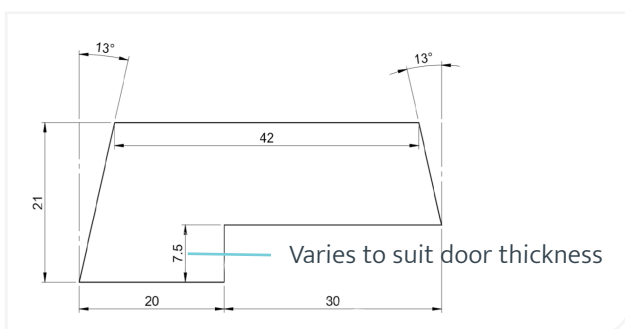
- monitor patients easily and safely whilst still allowing a level of privacy
- staff only need to carry one key to use on both Intastop Removable Doorstop and an INTAGlaze panel (8mm standard key, Lifeline Key option available)
- easy for staff to use whether right or left handed

Cross Section Drawing and Unit Measurements



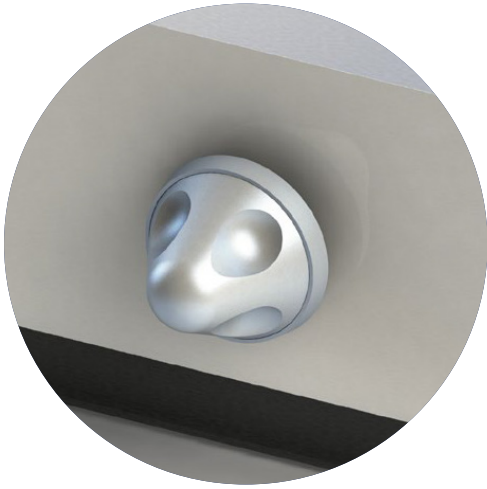
i NOTE: All sizes are approximate and for guide only. Please see Operating & Maintenance manual.

Fitting Instructions and Beading



i NOTE: Different beading/ intumescent is required for different glass specifications.
Example of timber beading profile.

Operating Mechanism Options



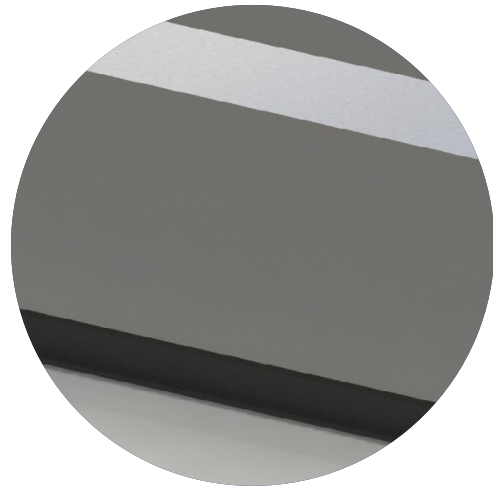
Knob



Standard 8mm Key

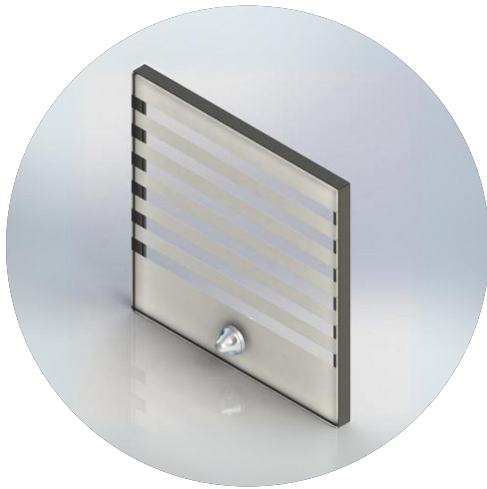


Lifeline Key



Blank

Layout



Open



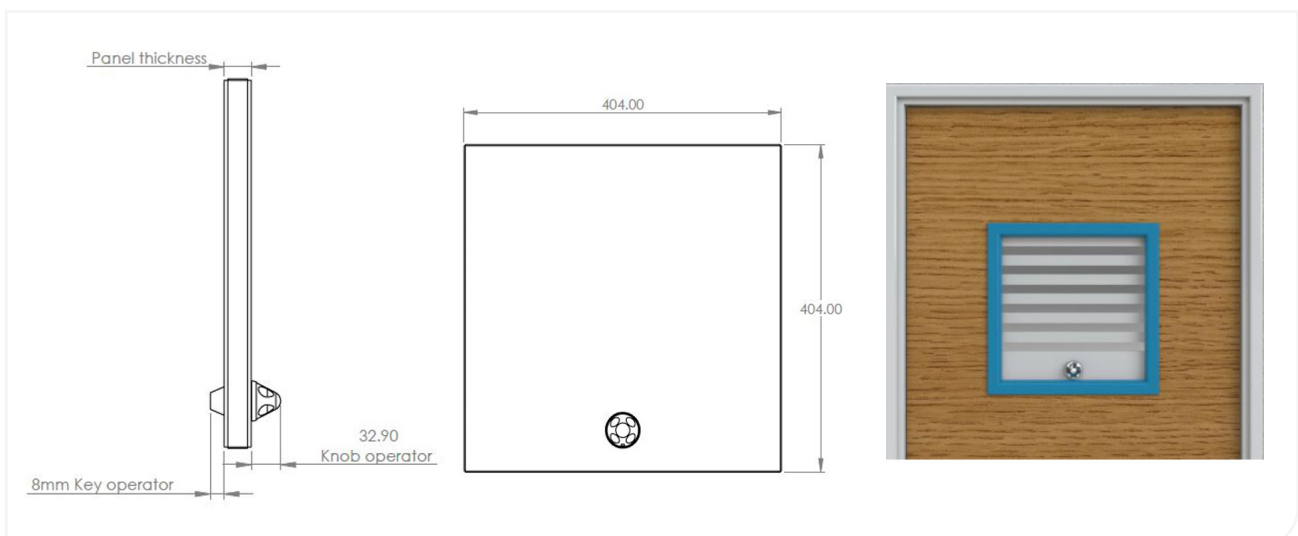
Closed

Panel Configuration Options

Available Operator Combinations	
Knob	Knob
Knob	8mm Key
Knob	Lifeline Key
Knob	Blank
8mm Key	Blank
Lifeline	Blank

Configuration	Panel Thickness
6mm, 6mm	22mm
6mm, 10mm	26mm
10mm, 10mm	30mm
10mm, 19mm	39mm

Panel Size	
1	254 x 804
2	404 x 404





Disclaimer:

All products must be fitted as per the directions detailed in the individual product Installation Instruction Document. Hipac takes no responsibility for incorrect installation/operation of the product. By purchasing this product, you are confirming that the product will be fitted as per the instructions.

Please note that Hipac offers a range of measures designed to reduce the risk of self-harm or suicide and does not offer any guarantee that it will not take place. The solutions have been designed as a deterrent only.

ABOUT HIPAC

Operating at the forefront of healthcare, we strive to redefine what's possible. We provide superior products, design expertise and total solutions to help create environments where nothing stands in the way of patient care.

Contact information

1800 75 93 93

info@hipac.com.au

www.hipac.com.au

