

IVision Privacy Vision Panel



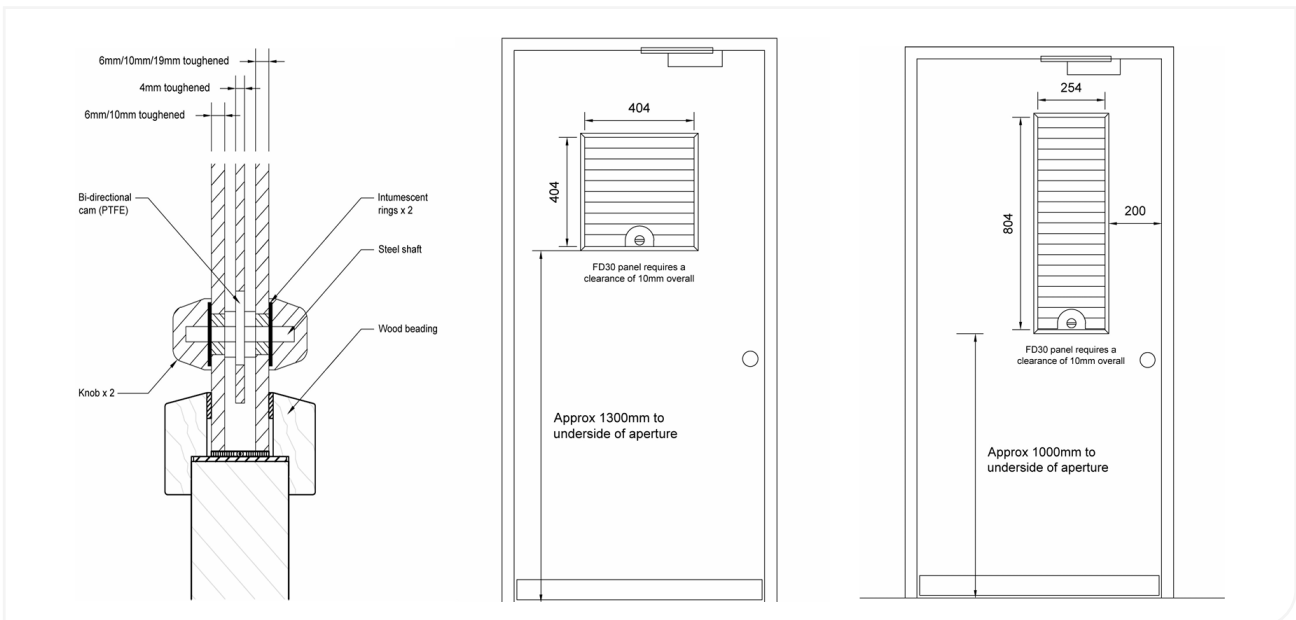
IVision has twice the open area compared to other panels on the market. This revolutionary panel gives up to 67% visibility on the 400 x 400mm panel and up to 80% visibility on a 250 x 800mm panel in its open position, and blackout in its closed state. With no mains power needed, this contemporary panel enhances any surrounding.

Size (Custom sizes available)	Rectangular	254 x 804mm, 254 x 404mm
	Square	404 x 404mm
Performance	400 x 400	67% visibility
	250 x 800	80% visibility
Finish (Optional: Upgrade to toughened laminated glass e.g. 10.4mm thickness)	22mm Panel	6mm toughened glass on both sides
	26mm Panel	6mm toughened glass on staff side, 10mm toughened glass on patient side
	30mm Panel	10mm toughened glass on both sides
	39mm Panel	10mm toughened glass on staff side, 19mm toughened glass on patient side
Ironmongery options	Standard	8mm key, lifeline key, thumb turn / knob.
	Non-standard	5mm key and lever
Fixing	As per manufacturers recommendations	
Testing	Cycle tested to greater than 40,000 cycles (10 years typical use)	
Maintenance and Cleaning	See manufacturer's recommendation	

IVision Benefits

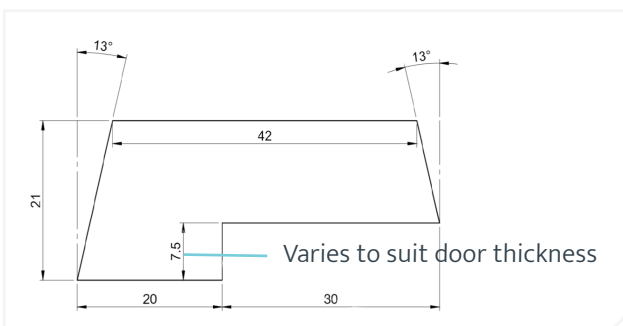
- monitor patients easily and safely whilst still allowing a level of privacy
- staff only need to carry one key to use on both Intastop Removable Doorstop and an INTAGlaze panel (8mm standard key, Lifeline Key option available)
- easy for staff to use whether right or left handed
- quiet operation (controlled closing of glass and optional plastic key)

Cross Section Drawing and Unit Measurements



NOTE: All sizes are approximate and for guide only. Please see Operating & Maintenance manual.

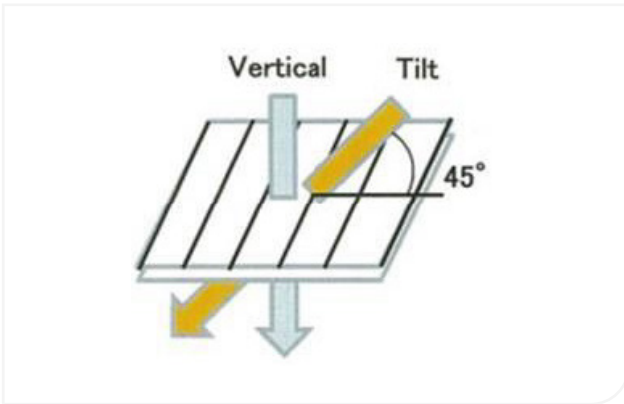
Fitting Instructions and Beading



NOTE: Different beading/intumescent is required for different glass specifications.

Example of timber beading profile.

Dark State Transmission

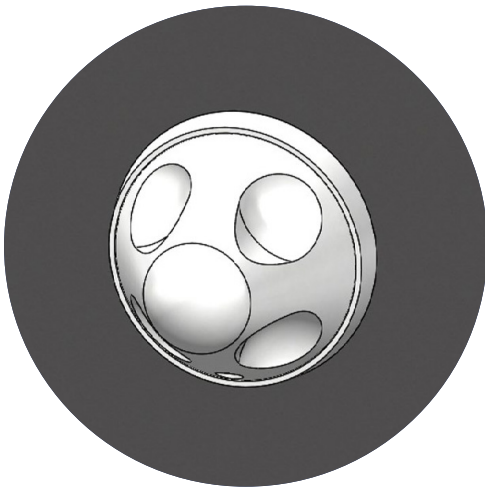


Due to the nature of the product we cannot guarantee full blackout for the IVison panel. It provides a high level privacy but the below light leakage does occur and we cannot get away from this.

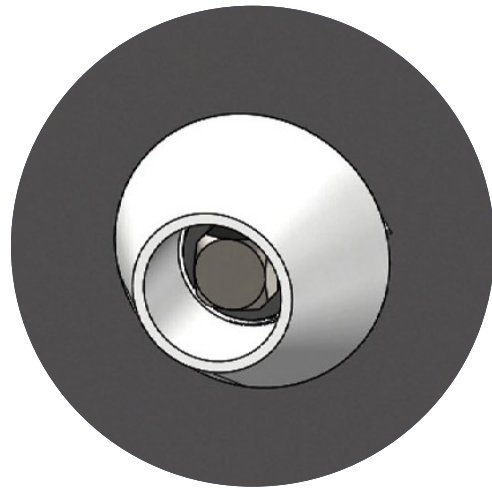
Dark state transmission:

- 0 degree viewing: 0.002% - 0.012%
- 45 degree viewing: 0.6%

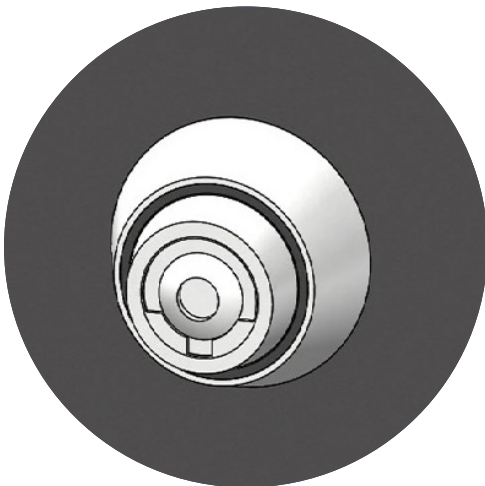
Operating Mechanism Options



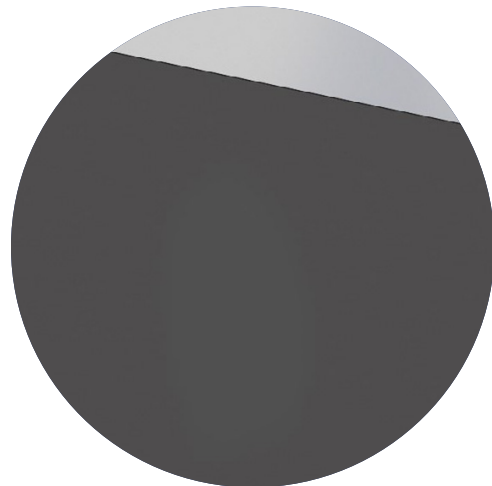
Knob



Standard Key



Lifeline Key



Blank

Layout

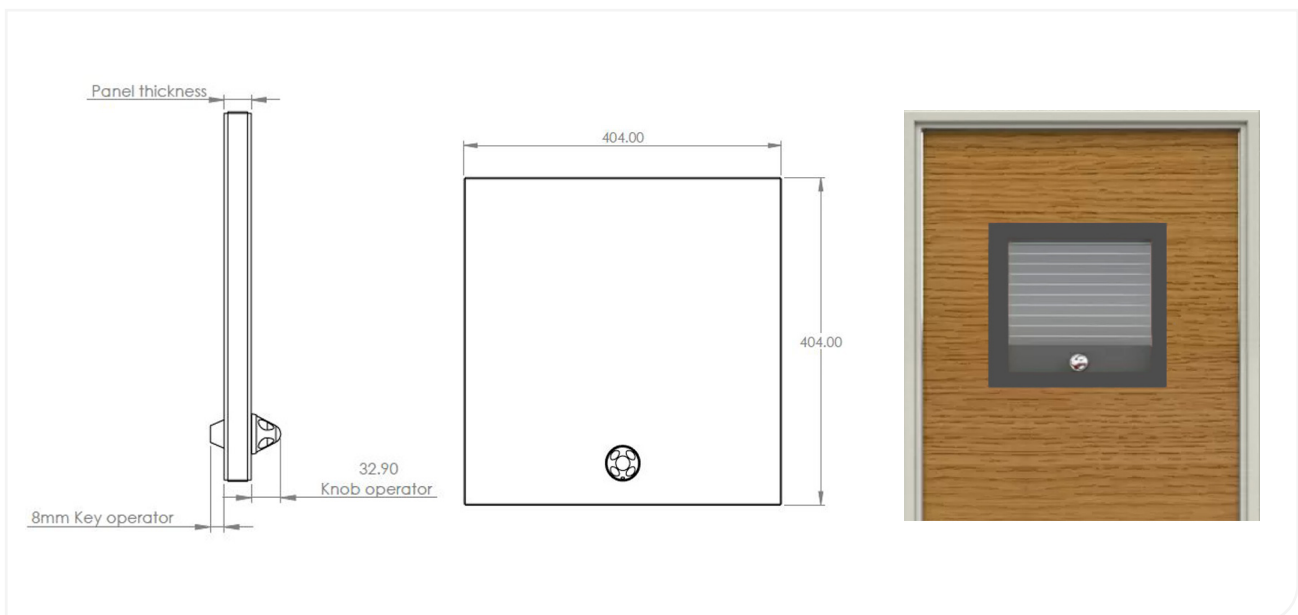


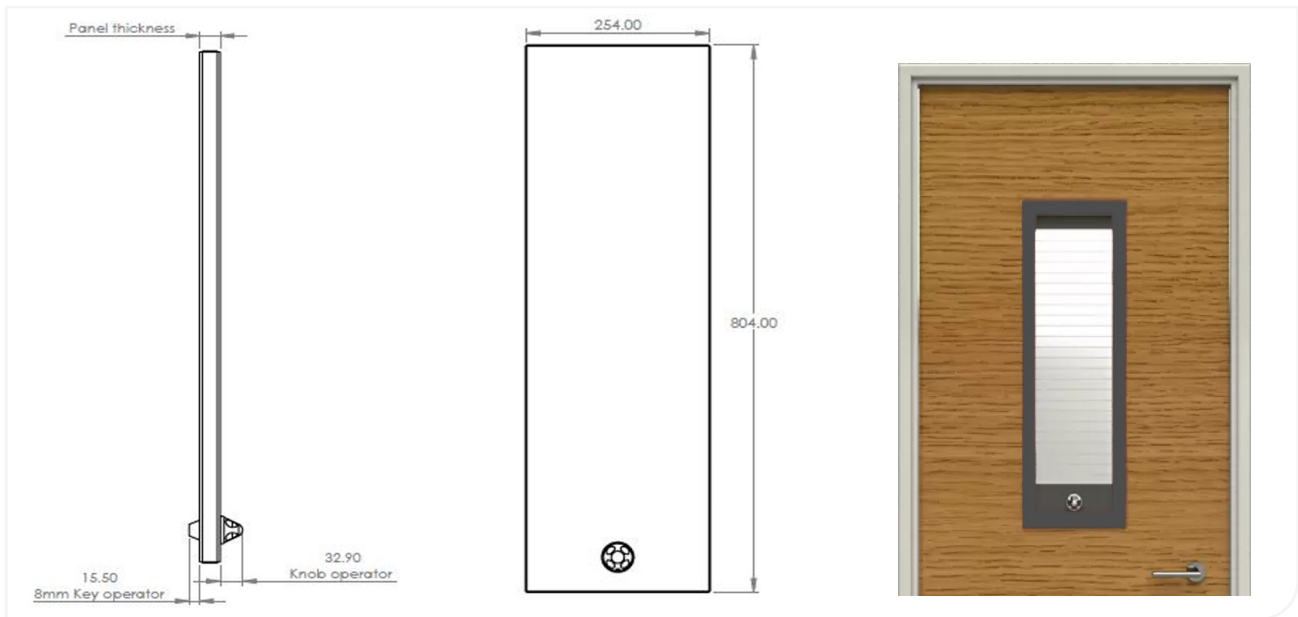
Panel Configuration Options

Available Operator Combinations	
Knob	Knob
Knob	8mm Key
Knob	Lifeline Key
Knob	Blank
8mm Key	Blank
Lifeline	Blank

Configuration	Panel Thickness
6mm, 6mm	22mm
6mm, 10mm	26mm
10mm, 10mm	30mm
10mm, 19mm	39mm

Panel Size	
1	254 x 804
2	404 x 404





Disclaimer:

All products must be fitted as per the directions detailed in the individual product Installation Instruction Document. Hipac takes no responsibility for incorrect installation/operation of the product. By purchasing this product, you are confirming that the product will be fitted as per the instructions.

Please note that Hipac offers a range of measures designed to reduce the risk of self-harm or suicide and does not offer any guarantee that it will not take place. The solutions have been designed as a deterrent only.

ABOUT HIPAC

Operating at the forefront of healthcare, we strive to redefine what's possible. We provide superior products, design expertise and total solutions to help create environments where nothing stands in the way of patient care.

Contact information



1800 75 93 93



info@hipac.com.au



www.hipac.com.au

 **Hipac**
We're here for life