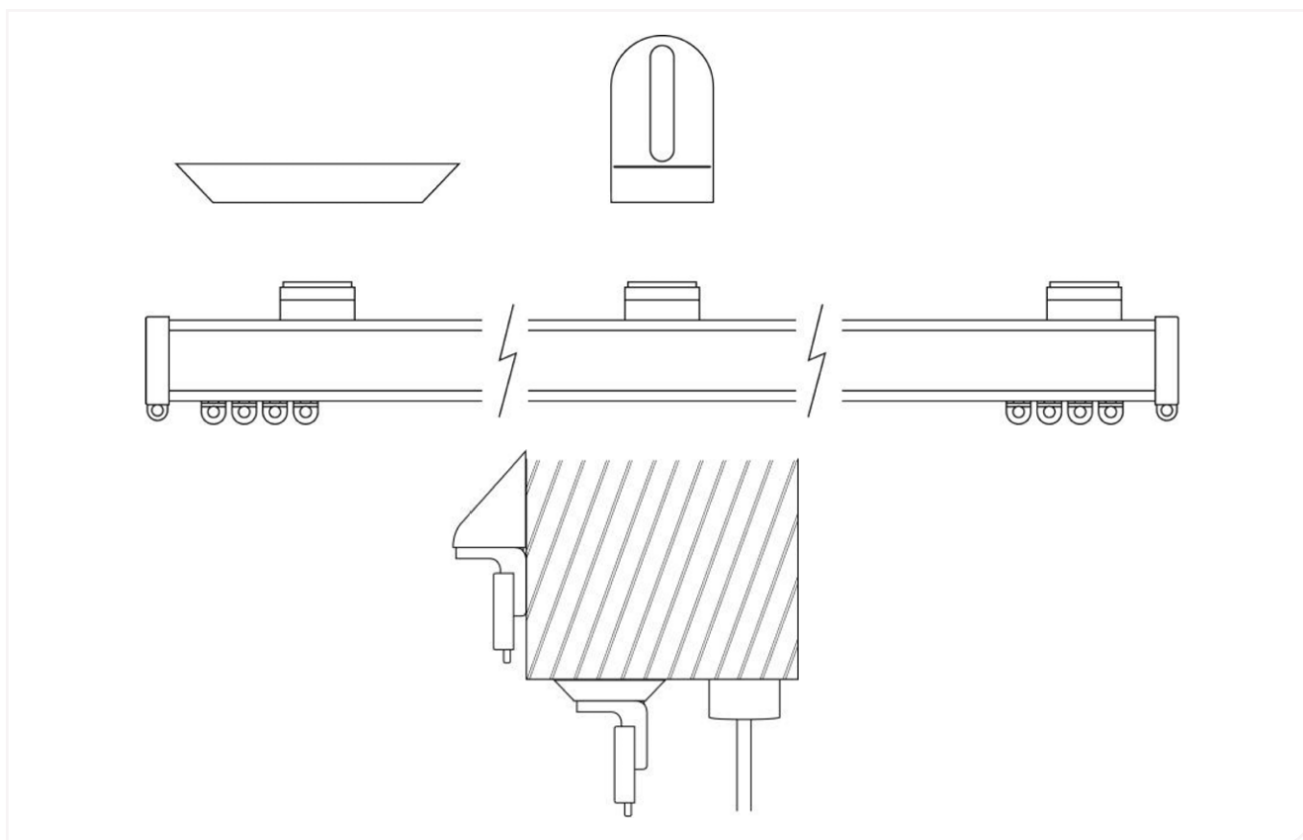


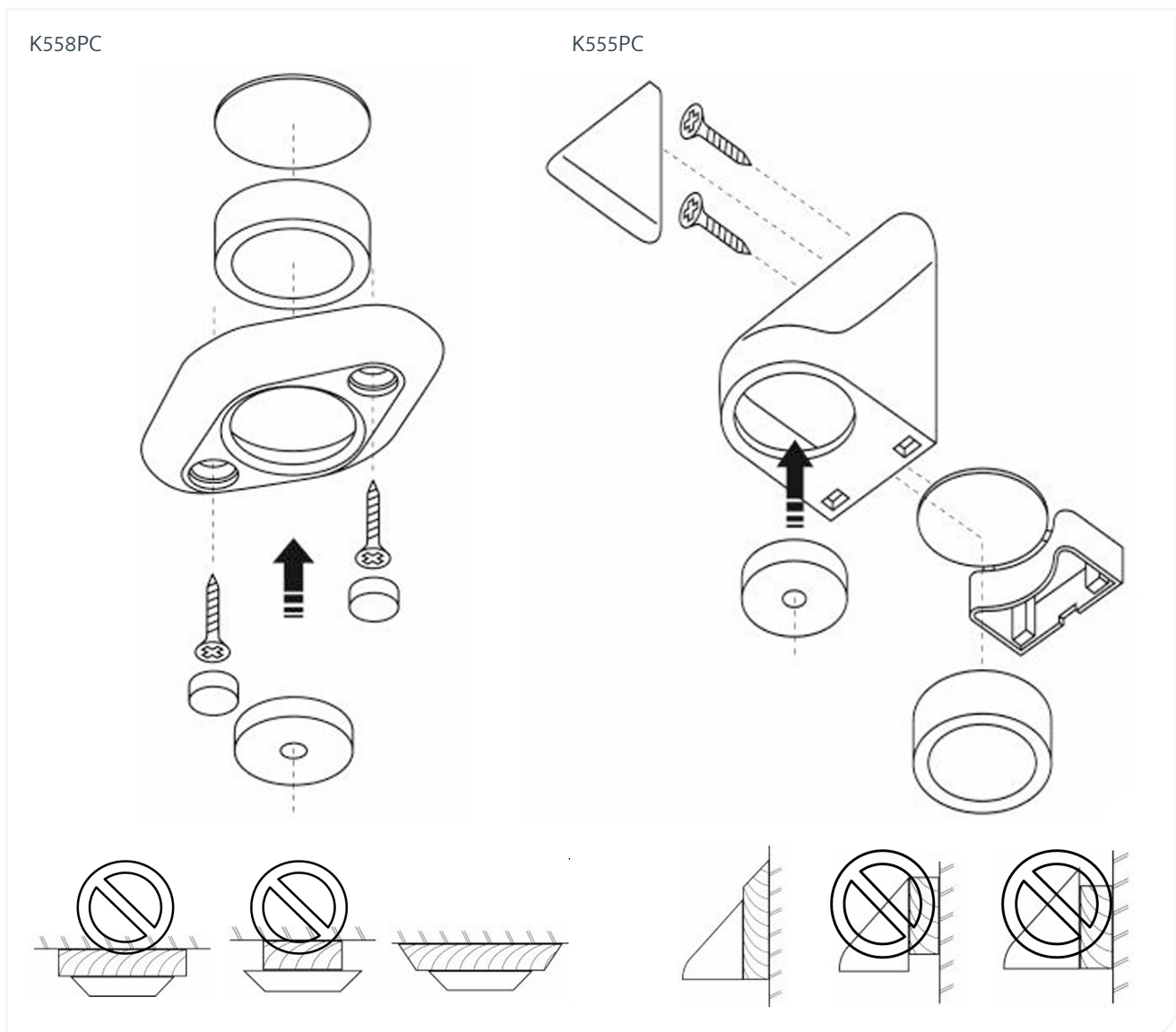
K9500 Anti-Ligature Flexible Window Curtain Track



Fitting Instructions

1. The tracks come pre-assembled with evenly spaced brackets no wider than 400 mm apart. If tracks are being mounted on existing brackets or where the brackets have to be positioned to avoid obstructions, adjustments can be made as per the following.
2. Each track bracket is made up with 3 parts, bracket main body, track insert which slides into track profile, and cover cap. To move a bracket position, remove the cover cap with small slotted screwdriver, loosen screws that clamp against track and slide bracket to new desired position. Re-tighten screws and replace cover cap.
3. Hold the track up against the intended fixing position and mark the centre points of the bracket positions. If track is large, mark only the centre bracket position at this stage.

4. Fix top or face brackets to ceiling or wall using suitable fixing screws/plugs as shown below. It is important that the bracket is securely fixed to the substrate using TWO fixing screws and care must be taken to ensure that no ligature points are left once installation has been completed. If a degree of float is required in the magnet, the packing disc may be discarded.



5. Try track in position, attach additional brackets where required.
6. Once track is fitted and bracket positioning has been confirmed by testing, the push-in screw cover **MUST** be fitted ensuring that it is flush with the bracket body. The push-in screw cover is intended to be a tight fit to prevent unauthorised access to fittings.
7. Hang the curtain on the track.

8. Check curtain operation and add silicone spray if required.

All Brackets

Discs should be positioned horizontally, and the centre of gravity of the load should be directly beneath the centre-line of the discs. Test the completed installation. The downward force needed to part the brackets should never be more than 400N (40kg static load) at any point.



Warning

The magnetic bracket is powerful. Handle with care. If allowed to attach to a flat steel surface it may be difficult to remove. **DO NOT PLACE NEAR SENSITIVE ELECTRONIC EQUIPMENT.**

Disclaimer:

All products must be fitted as per the directions detailed in the individual product Installation Instruction Document. Hipac takes no responsibility for incorrect installation/operation of the product. By purchasing this product, you are confirming that the product will be fitted as per the instructions.

Please note that Hipac offers a range of measures designed to reduce the risk of self-harm or suicide and does not offer any guarantee that it will not take place. The solutions have been designed as a deterrent only.

ABOUT HIPAC

Operating at the forefront of healthcare, we strive to redefine what's possible. We provide superior products, design expertise and total solutions to help create environments where nothing stands in the way of patient care.

Contact information



1800 75 93 93



info@hipac.com.au



www.hipac.com.au

