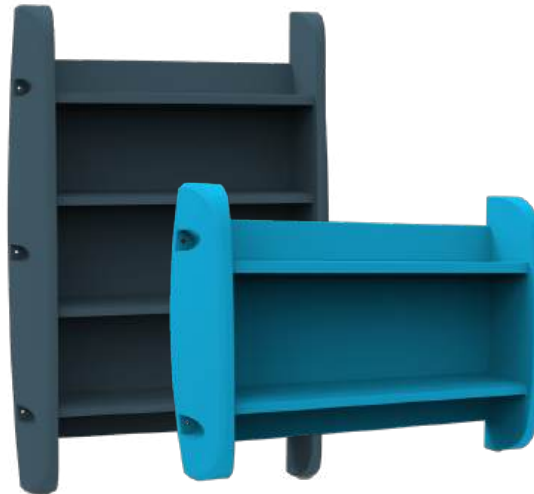
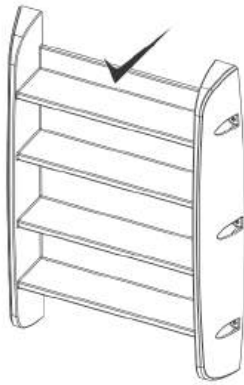


Storage Shelf - 4 Tier - Wall Mounted



Items for Installation	
Supplied	
1 x 4 tier shelf (Roto-moulded)	6 x M6 x 80mm Stainless button head Torx screws
6 x M6 x 80mm Nail in anchors	6 x M6 Stainless washers
Required	
Impact drill	Hammer
8mm Masonary drill bit	Torx head screw driver
Spirit level	
Required Personnel	2

1



1. Unbox the shelf and all hardware included in the box. Place the shelf in its intended position.

2



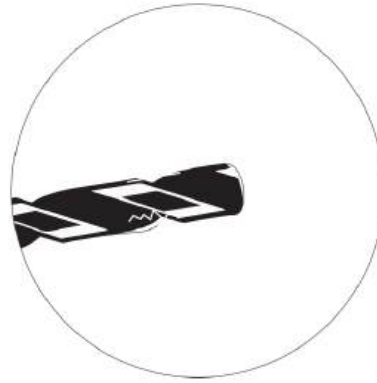
2. Place your spirit level on the shelf making sure it is level. Take your marker and mark all the mounting holes while someone holds the shelf in position.

3



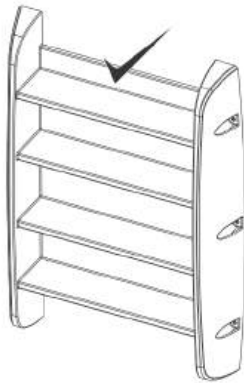
3. Use a pencil or permanent marker to mark the holes on the wall. Place the shelf to the side.

4



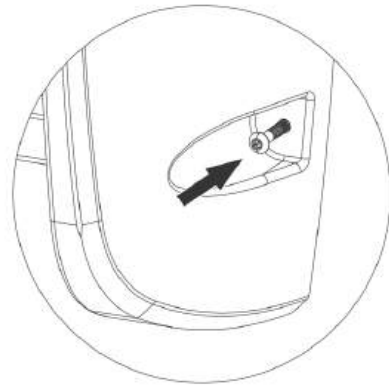
4. Take your drilling machine and the 8mm drill bit and drill the marked out holes. Once the holes have been drilled, move the shelf aside and insert the M6 nail in anchor plugs into the holes.

5



5. Place the shelf back into its final position making sure the drilled holes line up with the holes in the shelf and making sure that the shelf is level.

6



6. Insert the M6 Torx screw into each of the holes and tighten using a Torx screw driver. Make sure the shelf is secure against the wall.

Disclaimer:

All products must be fitted as per the directions detailed in the individual product Installation Instruction Document. Hipac takes no responsibility for incorrect installation/operation of the product. By purchasing this product, you are confirming that the product will be fitted as per the instructions.

Please note that Hipac offers a range of measures designed to reduce the risk of self-harm or suicide and does not offer any guarantee that it will not take place. The solutions have been designed as a deterrent only.

ABOUT HIPAC

Operating at the forefront of healthcare, we strive to redefine what's possible. We provide superior products, design expertise and total solutions to help create environments where nothing stands in the way of patient care.

Contact information



1800 75 93 93



info@hipac.com.au



www.hipac.com.au

 **Hipac**
We're here for life