

# Integrated Override Lockset

## Electronic Access Control for Mental Health

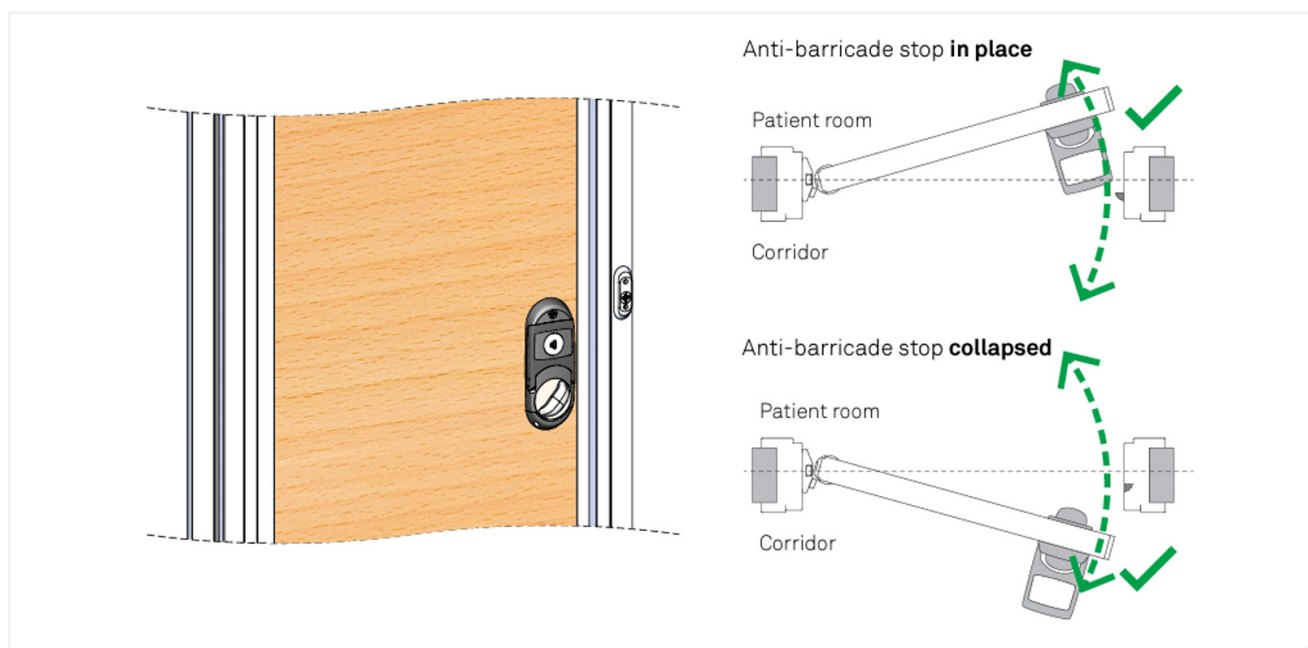
It is essential that all staff members using the Integrated Override Lockset understand it's relationship with the installed anti-barricade stop to ensure safe and effective use during an anti-barricade situation. All staff must complete training on the Integrated Override Lockset and anti-barricade stop.

### Swiftstop

The Integrated Override Lockset has been developed alongside the Swiftstop anti-barricade stop, making it the most effective combination, allowing access to a room in under 5 seconds.

Due to the small profile of the Swiftstop, the emergency lever can open into the room when the stop is in place. This allows for quick access if there has been determined tampering or in the rare event of an electronic issue.

The override can be released before or after the Swiftstop has been activated.



## Movastop

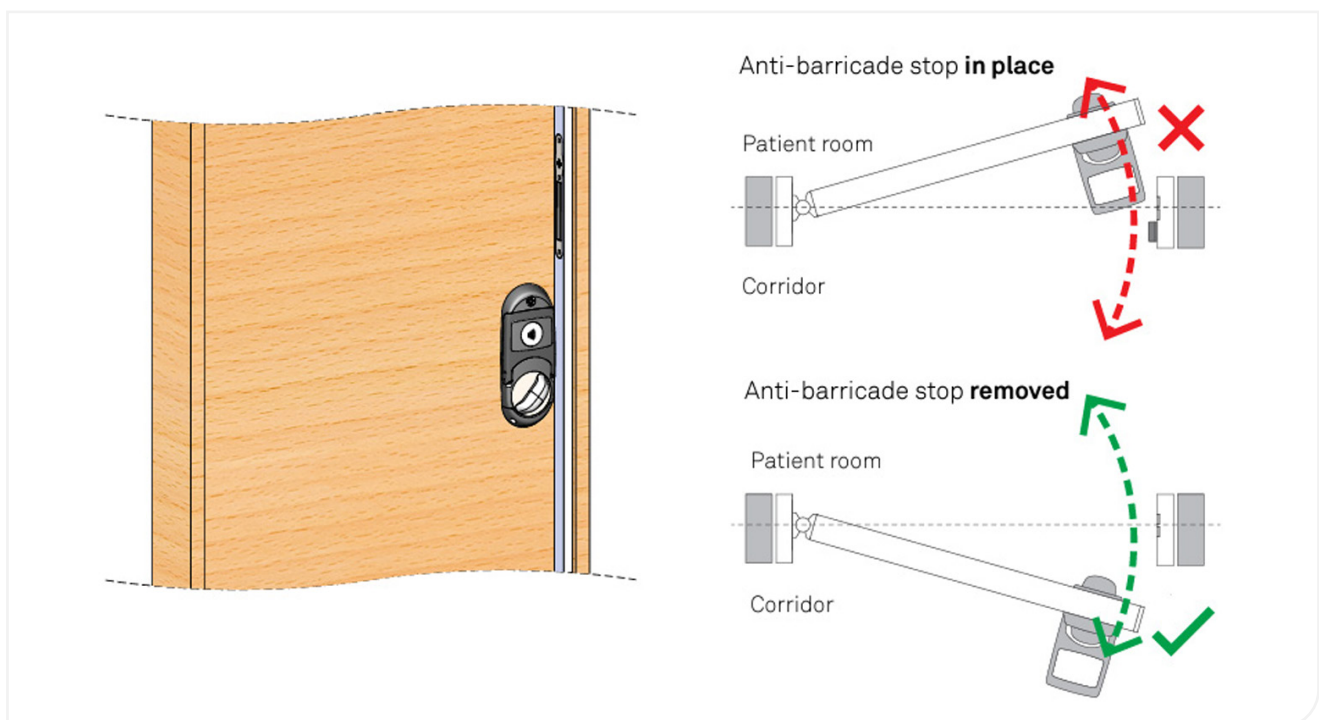
The Movastop anti-barricade stop can be removed before or after the emergency lever is deployed. If Movastop is in place when the emergency lever is deployed, the door cannot open into the room.

You must remove the anti-barricade stop before using the emergency lever in a barricade situation.

## Hinged Removable Door Stop - 25 x 50mm

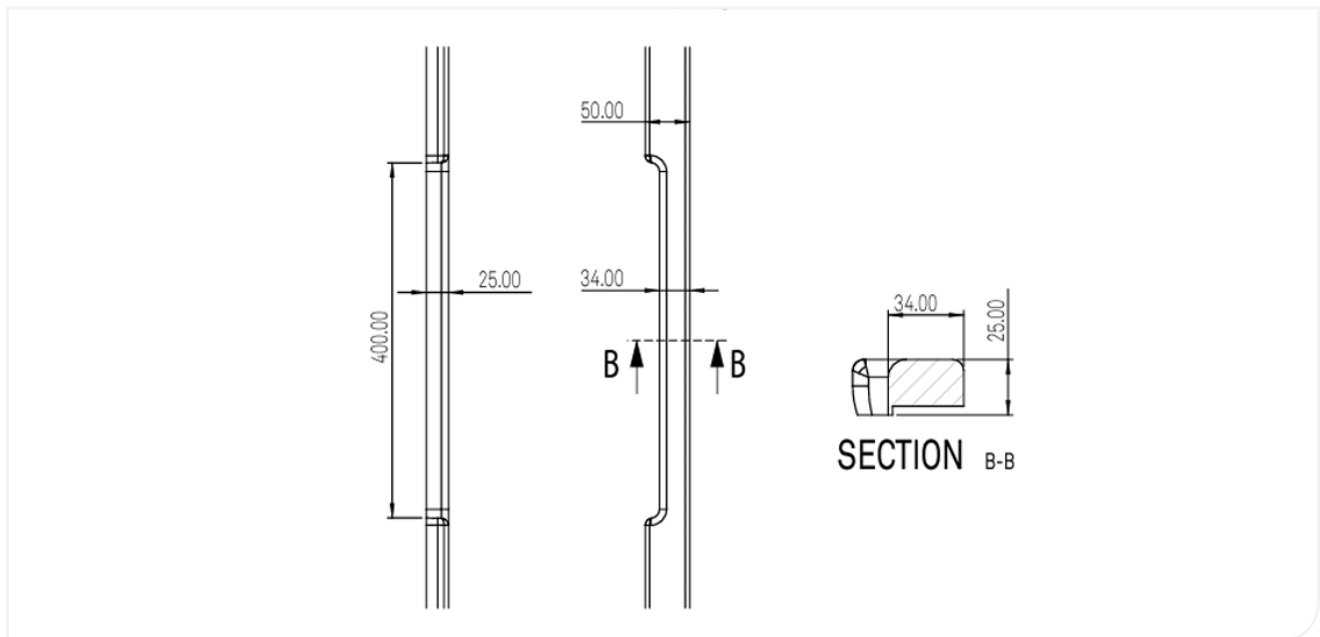
A Removable Door Stop cannot be released once the emergency lever is deployed. The emergency lever must be in the closed position to allow the RDS to be released.

You must remove the anti-barricade stop before using the emergency lever when in a barricade situation.



## Cut-out Requirement

To fit an Integrated Override Lockset with a 25 x 50mm RDS, a cut-out feature must be completed. The diagram to the right shows the minimum cut-out required for the function of the override.



### Disclaimer:

All products must be fitted as per the directions detailed in the individual product Installation Instruction Document. Hipac takes no responsibility for incorrect installation/operation of the product. By purchasing this product, you are confirming that the product will be fitted as per the instructions.

Please note that Hipac offers a range of measures designed to reduce the risk of self-harm or suicide and does not offer any guarantee that it will not take place. The solutions have been designed as a deterrent only.

### ABOUT HIPAC

Operating at the forefront of healthcare, we strive to redefine what's possible. We provide superior products, design expertise and total solutions to help create environments where nothing stands in the way of patient care.

#### Contact information



1800 75 93 93



info@hipac.com.au



www.hipac.com.au

 **Hipac**  
We're here for life