

DDA Contour Grab Rail



Codes	116596	Contour Anti-Ligature Grab Rail, 900mm
	116594	Contour Anti-Ligature Grab Rail, 700mm
	117596	Contour Anti-Ligature Grab Rail, 300mm
	116976	Contour Anti-Ligature 30 Degree Grab Rail, 700mm x 900mm
	116598	Contour Anti-Ligature 90 Degree Grab Rail, 700mm x 900mm
	120048	Contour Anti-Ligature 90 Degree Grab Rail, 450mm x 450mm

Hipac Pty Ltd can take no responsibility for incorrect fitting of Grabrails that are not fitted as directed in these instructions.

1. Correctly measure the position of the rail from floor and walls. If required rail can be installed at small fall to allow for easier cleaning and washing.
2. Position the rails and mark the position of the holes for fixings. (This may require two people).
3. If wall tiles have been installed, drill 8mm holes through tiles to reduce the pressure on the tiles and reduce the chances of cracking tiles. Drill 6.5mm holes into brickwork ensuring it is deep enough to take 25mm green plug and 50mm screw.
4. Install 25mm green plug into hole and push into hole past the depth of the tiles to prevent any pressure on the wall tiles.

5. Hold rail in position and install required number of 12G x 50mm stainless steel security screws. (Refer to list below for number required).
6. The junction between rail and the wall is to be sealed with anti-pick sealant.



IMPORTANT: The position of the Anti-ligature rail is critical to comply with standards Australia AS 1428.1-2009

Fixing Requirements

Stainless Steel Safety Screws.

300mm Grabrail

6nr x 12G x 50mm pin hex countersunk self-tapper screws.

700mm Grabrail

8nr x 12G x 50mm pin hex countersunk self-tapper screws.

900mm Grabrail

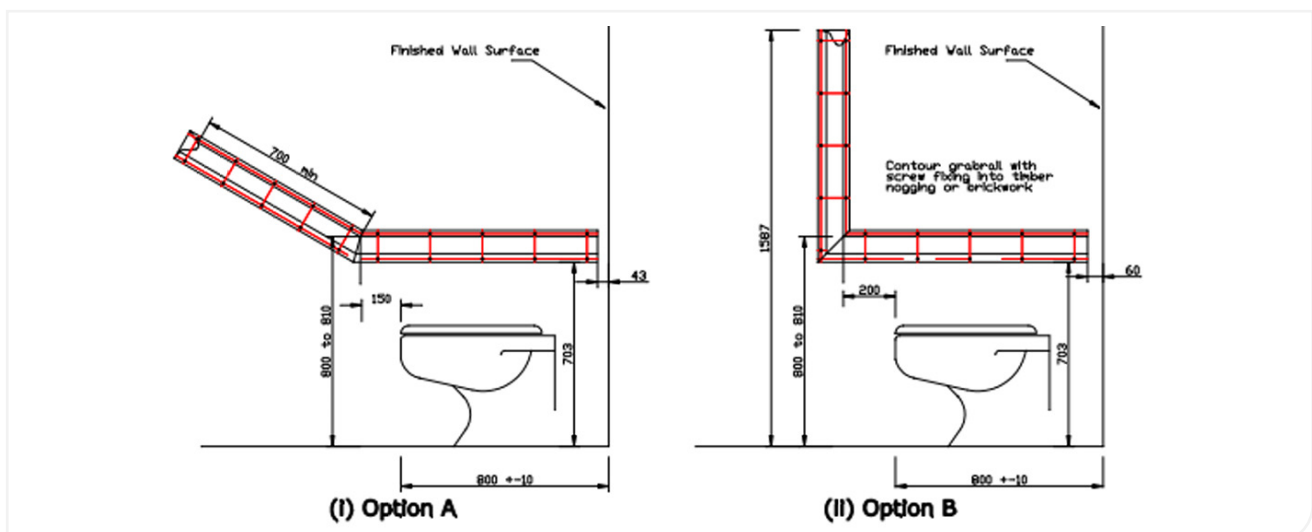
10nr x 12G x 50mm pin hex countersunk self-tapper screws.

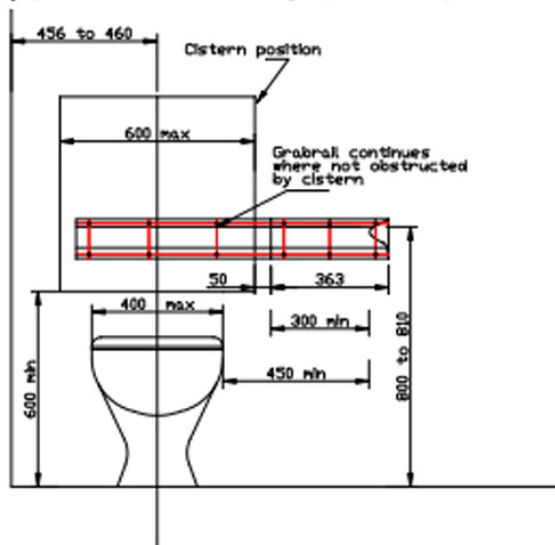
30 deg Grabrail

18nr x 12G x 50mm pin hex countersunk self-tapper screws.

90 deg Grabrail

19n x 12G x 50mm pin hex countersunk self-tapper screws.



(a) Side view showing optional systems for grabrails at side of pan**(b) Grabrail at back of pan****Install Instructions**

Measure correct position of rail.
 Mark position of screw holes on wall.
 Drill holes through tiles oversize then
 drill holes for plugs in brickwork.
 Install green plug well into brickwork.
 Install stainless security screws in position.
 Seal top of rail/wall junction with anti-tamper
 sealant.

Picking List

Fitting requirements for fixing into brickwork or
 timber ply noggings. Allow for depth of tiles
 and lining.

300 Grabrail
 6 x 10g x 50mm pin hex countersunk self tappers

700 Grabrail
 8 x 10g x 50mm pin hex countersunk self tapper

900 Grabrail
 10 x 10g x 50mm pin hex countersunk self tapper

90deg Grabrail
 19 x 10g x 50mm pin hex countersunk self tappers

30 deg Grabrail
 18 x 10g x 50mm pin hex countersunk self tappers

Screws are to be fitted with 25mm green plugs.
 Drill hole with 6.5mm or 7mm drill to required depth.

Disclaimer:

All products must be fitted as per the directions detailed in the individual product Installation Instruction Document. Hipac takes no responsibility for incorrect installation/operation of the product. By purchasing this product, you are confirming that the product will be fitted as per the instructions.

Please note that Hipac offers a range of measures designed to reduce the risk of self-harm or suicide and does not offer any guarantee that it will not take place. The solutions have been designed as a deterrent only.

ABOUT HIPAC

Operating at the forefront of healthcare, we strive to redefine what's possible.
 We provide superior products, design expertise and total solutions to help create
 environments where nothing stands in the way of patient care.

Contact information

1800 75 93 93



info@hipac.com.au



www.hipac.com.au

 **Hipac**
 We're here for life