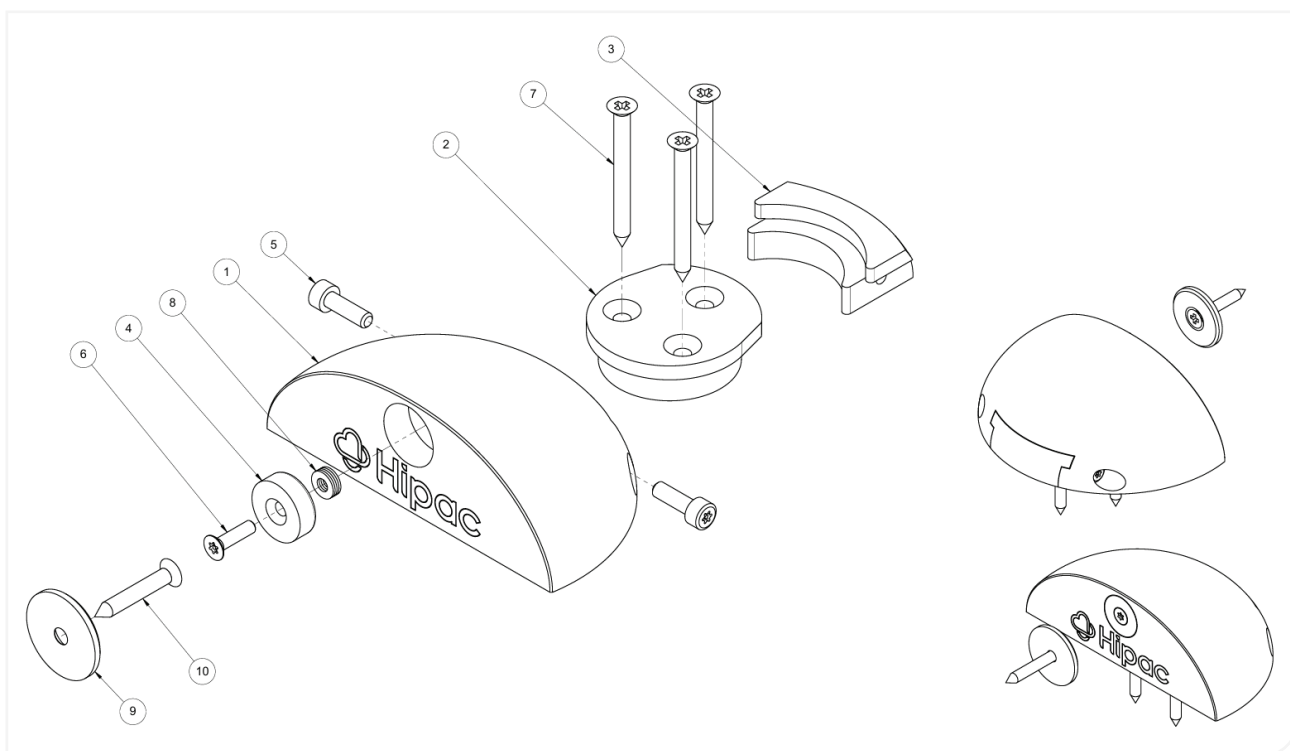
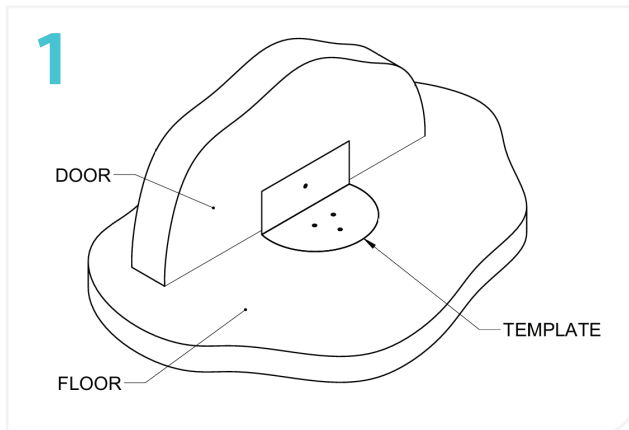


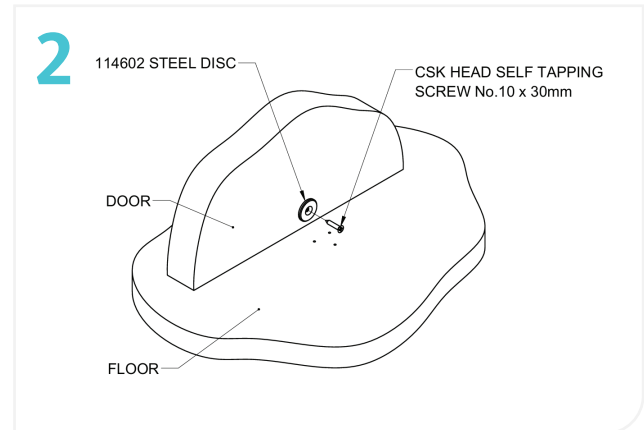
Secure Floor Mounted Doorstop with Magnetic Hold Open



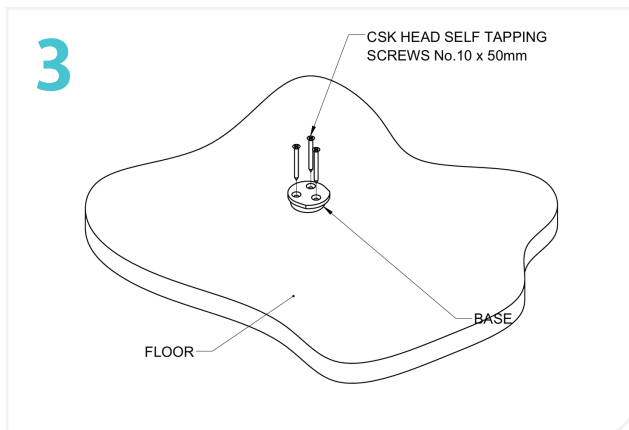
Item No.	Part No.	Description	Qty.
1	314439	Door Stop Magnetic Hold - (120mm Ø x 40mm)	1
2	314440	Base Magnetic Door Stop	1
3	314441	Magnetic Door Stop Infill	1
4	314442	Magnet, Neodymium Countersunk Pot Magnet - 20mm x 7mm	1
5		Screw, Torx Security Socket, SHCS, SS, M5x16	2
6		Screw, Torx Security Socket, Csk Head, SS, M4x16	1
7		Screw, Self Tapping, SS, No.10x50mm	3



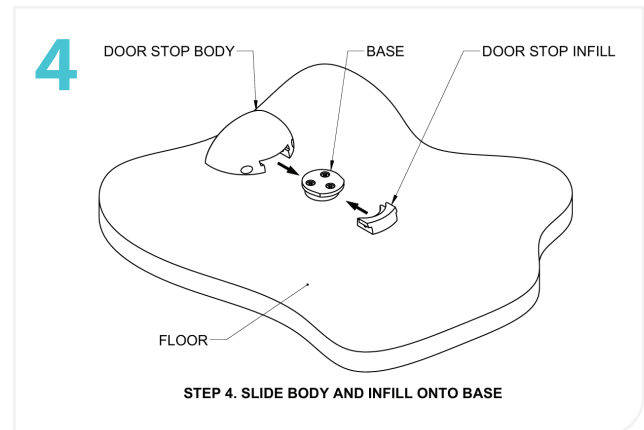
1. Mark hole centres and drill pilot holes in door and floor.



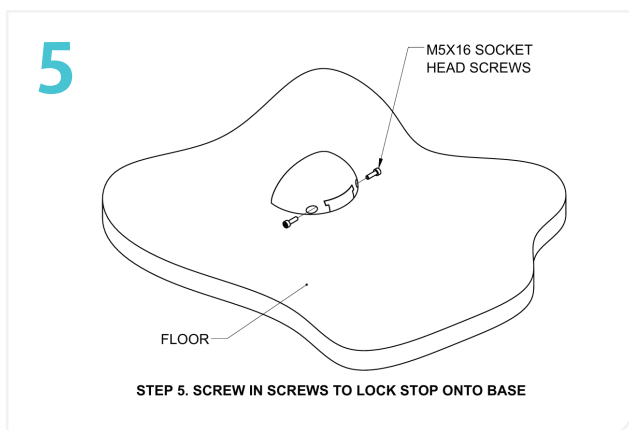
2. Assemble steel disc onto door.



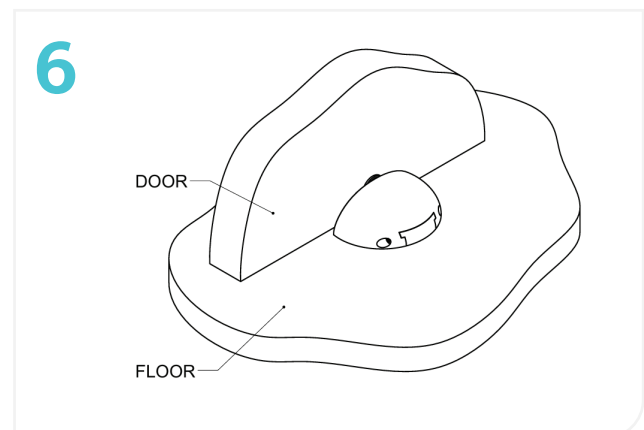
3. Drill pilot holes.



4. Slide body and infill onto base.

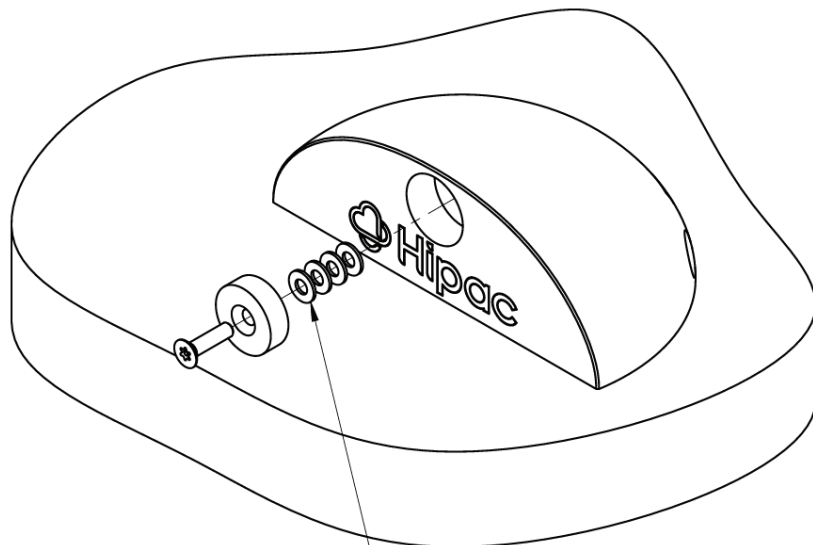


5. Screw in screws to lock stop onto base.



6. Completed installation.

Adjusting Hold Strength



TO REDUCE HOLD STRENGTH
UNDO SCREW AND REMOVE ONE OR
MORE WASHERS TO ACHIEVE
REQUIRED HOLD STRENGTH

Disclaimer:

All products must be fitted as per the directions detailed in the individual product Installation Instruction Document. Hipac takes no responsibility for incorrect installation/operation of the product. By purchasing this product, you are confirming that the product will be fitted as per the instructions.

Please note that Hipac offers a range of measures designed to reduce the risk of self-harm or suicide and does not offer any guarantee that it will not take place. The solutions have been designed as a deterrent only.

ABOUT HIPAC

Operating at the forefront of healthcare, we strive to redefine what's possible.

We provide superior products, design expertise and total solutions to help create environments where nothing stands in the way of patient care.

Contact information



1800 75 93 93



info@hipac.com.au



www.hipac.com.au

 **Hipac**
We're here for life